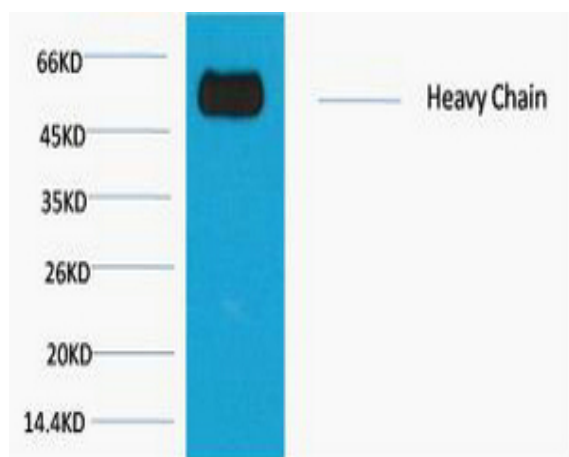


**Rabbit IgG (Fc specific, Heavy Chain) Monoclonal Antibody(1E1)**

<b>Catalog No :</b>	YM3167
<b>Reactivity :</b>	Rabbit
<b>Applications :</b>	WB
<b>Target :</b>	Rabbit IgG (Fc specific, Heavy Chain)
<b>Immunogen :</b>	Recombinant Protein of Rabbit IgG (Fc specific, Heavy Chain)
<b>Specificity :</b>	The antibody reacts with the Fc portion of rabbit IgG heavy chain but not with the Fab portion of rabbit immunoglobulins. The antibody may cross-react with immunoglobulins from other species.
<b>Formulation :</b>	PBS, pH 7.4, containing 0.5%BSA, 0.02% sodium azide as Preservative and 50% Glycerol.
<b>Source :</b>	Monoclonal, Mouse
<b>Dilution :</b>	WB 1:2000-5000
<b>Purification :</b>	The antibody was affinity-purified from mouse ascites by affinity-chromatography using specific immunogen.
<b>Storage Stability :</b>	-15°C to -25°C/1 year(Do not lower than -25°C)
<b>Observed Band :</b>	55kD
<b>Background :</b>	Whole IgG antibodies are isolated as intact molecules from antisera by immunoaffinity chromatography. They have an Fc portion and two antigen binding Fab portions joined together by disulfide bonds and therefore they are divalent. The average molecular weight is reported to be about 160 kDa. The Fc specific, Heavy Chain antibody reacts with the Fc portion of IgG heavy chain but not with the Fab portion of IgG.
<b>Tag :</b>	recombinant
<b>Sort :</b>	13722

<b>No4 :</b>	<u>1</u>
<b>Host :</b>	<u>Mouse</u>
<b>Modifications :</b>	<u>Unmodified</u>

## Products Images



Western blot analysis of Reduced Rabbit IgG, H+L, diluted at 1:10000.