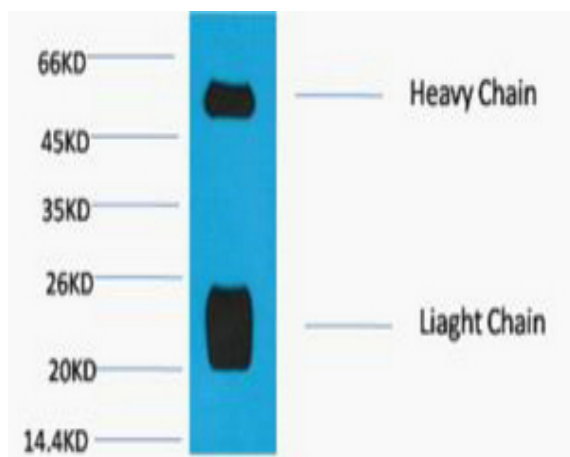


Rabbit IgG (H+L) Monoclonal Antibody(Mix)

| | |
|----------------------------|--|
| Catalog No : | YM3166 |
| Reactivity : | Rabbit |
| Applications : | WB |
| Target : | Rabbit IgG (H+L) |
| Immunogen : | Recombinant Protein of Rabbit IgG (H+L) |
| Specificity : | The antibody reacts with whole molecule rabbit IgG. The antibody may cross-react with immunoglobulins from other species. |
| Formulation : | PBS, pH 7.4, containing 0.5%BSA, 0.02% sodium azide as Preservative and 50% Glycerol. |
| Source : | Monoclonal, Mouse |
| Dilution : | WB 1:2000-5000 |
| Purification : | The antibody was affinity-purified from mouse ascites by affinity-chromatography using specific immunogen. |
| Storage Stability : | -15°C to -25°C/1 year(Do not lower than -25°C) |
| Observed Band : | 25,55kD |
| Background : | Whole IgG antibodies are isolated as intact molecules from antisera by immunoaffinity chromatography. They have an Fc portion and two antigen binding Fab portions joined together by disulfide bonds and therefore they are divalent. The average molecular weight is reported to be about 160 kDa. The whole IgG form of antibodies is suitable for the majority of immunodetection procedures and is the most cost effective. |
| Tag : | recombinant |
| Sort : | 13723 |
| | 1 |

Host: Mouse**Modifications :** Unmodified

Products Images



Western blot analysis of Reduced Rabbit IgG, H+L, diluted at 1:10000.