

## Pax-1 Polyclonal Antibody

<b>Catalog No :</b>	YT3599
<b>Reactivity :</b>	Human;Rat;Mouse;
<b>Applications :</b>	WB;IHC;IF;ELISA
<b>Target :</b>	Pax-1
<b>Gene Name :</b>	PAX1
<b>Protein Name :</b>	Paired box protein Pax-1
<b>Human Gene Id :</b>	5075
<b>Human Swiss Prot No :</b>	P15863
<b>Mouse Swiss Prot No :</b>	P09084
<b>Immunogen :</b>	The antiserum was produced against synthesized peptide derived from human Pax-1. AA range:318-367
<b>Specificity :</b>	Pax-1 Polyclonal Antibody detects endogenous levels of Pax-1 protein.
<b>Formulation :</b>	Liquid in PBS containing 50% glycerol, 0.5% BSA and 0.02% sodium azide.
<b>Source :</b>	Polyclonal, Rabbit,IgG
<b>Dilution :</b>	WB 1:500 - 1:2000. IHC 1:100 - 1:300. ELISA: 1:5000.. IF 1:50-200
<b>Purification :</b>	The antibody was affinity-purified from rabbit antiserum by affinity-chromatography using epitope-specific immunogen.
<b>Concentration :</b>	1 mg/ml
<b>Storage Stability :</b>	-15°C to -25°C/1 year(Do not lower than -25°C)
<b>Observed Band :</b>	36kD

**Background :** This gene is a member of the paired box (PAX) family of transcription factors. Members of the PAX family typically contain a paired box domain and a paired-type homeodomain. These genes play critical roles during fetal development. This gene plays a role in pattern formation during embryogenesis and may be essential for development of the vertebral column. This gene is silenced by methylation in ovarian and cervical cancers and may be a tumor suppressor gene. Mutations in this gene are also associated with vertebral malformations. [provided by RefSeq, Mar 2012],

**Function :** function:This protein is a transcriptional activator. It may play a role in the formation of segmented structures of the embryo. May play an important role in the normal development of the vertebral column.,similarity:Contains 1 paired domain.,

**Subcellular Location :** Nucleus.

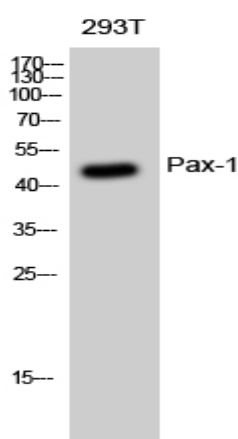
**Sort :** 11647

**No4 :** 1

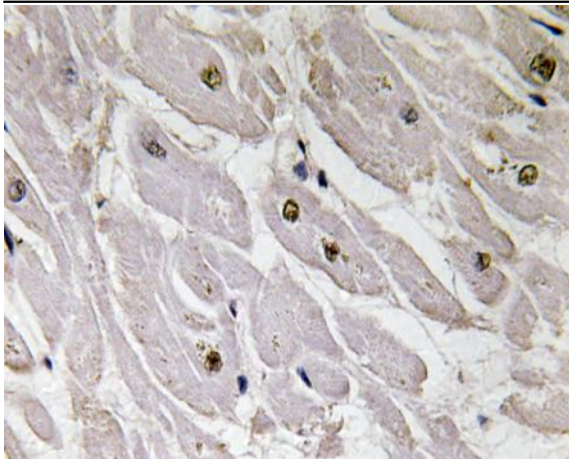
**Host :** Rabbit

**Modifications :** Unmodified

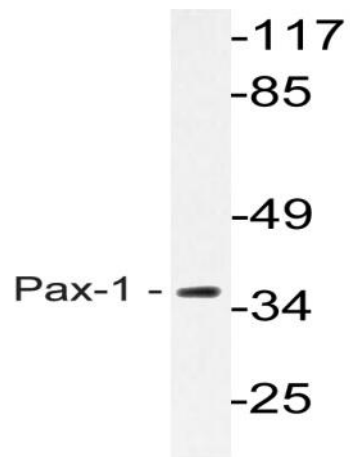
## Products Images



Western Blot analysis of 293T cells using Pax-1 Polyclonal Antibody diluted at 1:500 cells nucleus extracted by Minute TM Cytoplasmic and Nuclear Fractionation kit (SC-003, Inventibiotech, MN, USA).



Immunohistochemistry analysis of Pax-1 antibody in paraffin-embedded human heart tissue.



Western blot analysis of lysate from HeLa cells, using Pax-1 antibody.