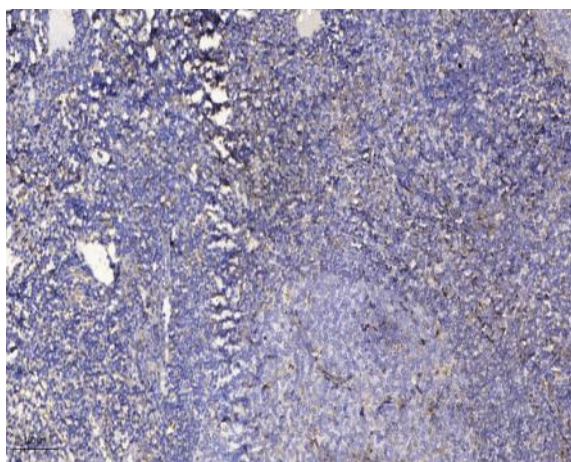


**PART-1 Polyclonal Antibody**

<b>Catalog No :</b>	YT3597
<b>Reactivity :</b>	Human;Rat;Mouse;
<b>Applications :</b>	IHC;IF;ELISA
<b>Target :</b>	PART-1
<b>Gene Name :</b>	PART1
<b>Protein Name :</b>	Prostate-specific and androgen-regulated protein
<b>Human Gene Id :</b>	25859
<b>Human Swiss Prot No :</b>	Q9NPD0
<b>Immunogen :</b>	Synthesized peptide derived from the N-terminal region of human PART-1.
<b>Specificity :</b>	PART-1 Polyclonal Antibody detects endogenous levels of PART-1 protein.
<b>Formulation :</b>	Liquid in PBS containing 50% glycerol, 0.5% BSA and 0.02% sodium azide.
<b>Source :</b>	Polyclonal, Rabbit,IgG
<b>Dilution :</b>	IHC 1:100 - 1:300. ELISA: 1:10000.. IF 1:50-200
<b>Purification :</b>	The antibody was affinity-purified from rabbit antiserum by affinity-chromatography using epitope-specific immunogen.
<b>Concentration :</b>	1 mg/ml
<b>Storage Stability :</b>	-15°C to -25°C/1 year(Do not lower than -25°C)
<b>Molecularweight :</b>	7kD
<b>Background :</b>	PART1 is induced by androgen in prostate adenocarcinoma cells. Multiple alternatively transcript variants have been described for this gene, none of which are predicted to encode a protein product.

**Sort :** 11643**No4 :** 1**Host :** Rabbit**Modifications :** Unmodified

## Products Images



Immunohistochemical analysis of paraffin-embedded human tonsil. 1, Antibody was diluted at 1:200(4° overnight). 2, Tris-EDTA,pH9.0 was used for antigen retrieval. 3,Secondary antibody was diluted at 1:200(room temperature, 30min).