

p53RFP Polyclonal Antibody

Catalog No :	YT3544
Reactivity :	Human;Mouse
Applications :	WB;ELISA
Target :	p53RFP
Gene Name :	RNF144B
Protein Name :	E3 ubiquitin-protein ligase RNF144B
Human Gene Id :	255488
Human Swiss Prot No :	Q7Z419
Mouse Gene Id :	218215
Mouse Swiss Prot No :	Q8BKD6
Immunogen :	Synthesized peptide derived from the Internal region of human p53RFP.
Specificity :	p53RFP Polyclonal Antibody detects endogenous levels of p53RFP protein.
Formulation :	Liquid in PBS containing 50% glycerol, 0.5% BSA and 0.02% sodium azide.
Source :	Polyclonal, Rabbit,IgG
Dilution :	WB 1:500 - 1:2000. ELISA: 1:40000. Not yet tested in other applications.
Purification :	The antibody was affinity-purified from rabbit antiserum by affinity-chromatography using epitope-specific immunogen.
Concentration :	1 mg/ml
Storage Stability :	-15°C to -25°C/1 year(Do not lower than -25°C)

Observed Band : 35kD

Background : caution:Lacks the His residue in the RING-type domain 2 that is one of the conserved features of the family.,domain:The RING-type zinc finger domain mediates binding to an E2 ubiquitin-conjugating enzyme.,function:E3 ubiquitin-protein ligase which accepts ubiquitin from E2 ubiquitin-conjugating enzymes UBE2L3 and UBE2L6 in the form of a thioester and then directly transfers the ubiquitin to targeted substrates such as LCMT2, thereby promoting their degradation. Induces apoptosis via a TP53/p53-dependent but caspase-independent mechanism.,pathway:Protein modification; protein ubiquitination.,PTM:Auto-ubiquitinated.,similarity:Belongs to the RBR family. RNF144 subfamily.,similarity:Contains 1 IBR-type zinc finger.,similarity:Contains 2 RING-type zinc fingers.,subunit:Interacts with UBE2L3, UBE2L6 and LCMT2.,tissue specificity:Broadly expressed, with lowest levels in brain, spleen and thymus.,

Function : caution:Lacks the His residue in the RING-type domain 2 that is one of the conserved features of the family.,domain:The RING-type zinc finger domain mediates binding to an E2 ubiquitin-conjugating enzyme.,function:E3 ubiquitin-protein ligase which accepts ubiquitin from E2 ubiquitin-conjugating enzymes UBE2L3 and UBE2L6 in the form of a thioester and then directly transfers the ubiquitin to targeted substrates such as LCMT2, thereby promoting their degradation. Induces apoptosis via a TP53/p53-dependent but caspase-independent mechanism.,pathway:Protein modification; protein ubiquitination.,PTM:Auto-ubiquitinated.,similarity:Belongs to the RBR family. RNF144 subfamily.,similarity:Contains 1 IBR-type zinc finger.,similarity:Contains 2 RING-type zinc fingers.,subunit:Interacts with UBE2L3, UBE2L6 and LCMT2.,tissue specificity:Broadly expressed, with lowest levels in brain, spleen and thymu

Subcellular Location : Mitochondrion membrane ; Single-pass membrane protein . Cytoplasm . Mostly cytosolic, accumulates in submitochondrial domains specifically upon apoptosis induction, in synchrony with BAX activation.

Expression : Broadly expressed, with lowest levels in brain and thymus, and highest levels detectable in heart, ovary and testis.

Sort : 11501

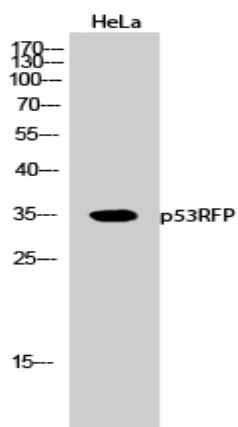
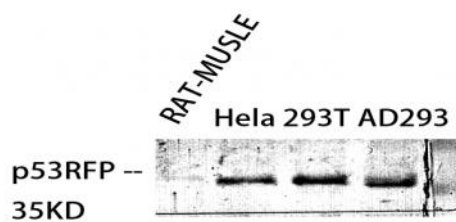
No4 : 1

Host : Rabbit

Modifications : Unmodified

Products Images

Western Blot analysis of various cells using p53RFP Polyclonal Antibody



Western Blot analysis of HeLa cells using p53RFP Polyclonal Antibody