

**p39 Polyclonal Antibody**

<b>Catalog No :</b>	YT3515
<b>Reactivity :</b>	Human;Rat;Mouse;
<b>Applications :</b>	WB;IHC;IF;ELISA
<b>Target :</b>	p39
<b>Gene Name :</b>	CDK5R2
<b>Protein Name :</b>	Cyclin-dependent kinase 5 activator 2
<b>Human Gene Id :</b>	8941
<b>Human Swiss Prot No :</b>	Q13319
<b>Mouse Swiss Prot No :</b>	O35926
<b>Immunogen :</b>	The antiserum was produced against synthesized peptide derived from human CDK5R2. AA range:81-130
<b>Specificity :</b>	p39 Polyclonal Antibody detects endogenous levels of p39 protein.
<b>Formulation :</b>	Liquid in PBS containing 50% glycerol, 0.5% BSA and 0.02% sodium azide.
<b>Source :</b>	Polyclonal, Rabbit,IgG
<b>Dilution :</b>	WB 1:500 - 1:2000. IHC 1:100 - 1:300. ELISA: 1:20000.. IF 1:50-200
<b>Purification :</b>	The antibody was affinity-purified from rabbit antiserum by affinity-chromatography using epitope-specific immunogen.
<b>Concentration :</b>	1 mg/ml
<b>Storage Stability :</b>	-15°C to -25°C/1 year(Do not lower than -25°C)
<b>Observed Band :</b>	40kD

**Background :** The protein encoded by this gene is a neuron-specific activator of CDK5 kinase. It associates with CDK5 to form an active kinase. This protein and neuron-specific CDK5 activator CDK5R1/p39NCK5A both share limited similarity to cyclins, and thus may define a distinct family of cyclin-dependent kinase activating proteins. [provided by RefSeq, Jul 2008],

**Function :** function:Activator of CDK5/TPKII.,similarity:Belongs to the cyclin-dependent kinase 5 activator family.,subunit:Heterodimer of a catalytic subunit and a regulatory subunit.,tissue specificity:Brain and neuron specific.,

**Subcellular Location :** Cell membrane ; Lipid-anchor ; Cytoplasmic side .

**Expression :** Brain and neuron specific.

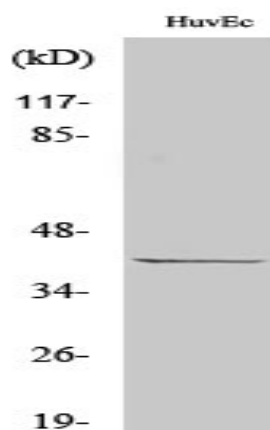
**Sort :** 11419

**No4 :** 1

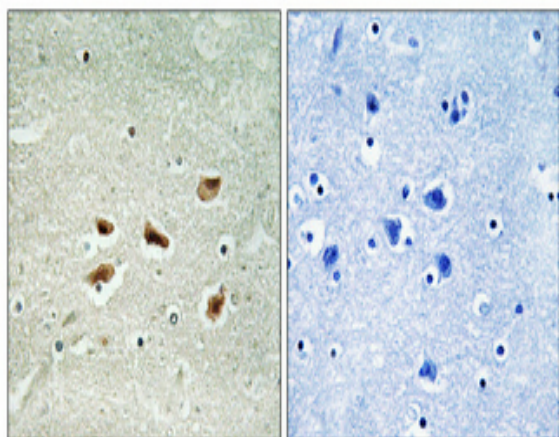
**Host :** Rabbit

**Modifications :** Unmodified

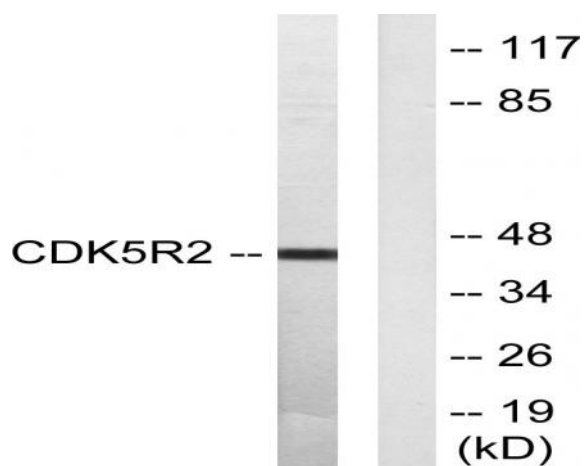
## Products Images



Western Blot analysis of various cells using p39 Polyclonal Antibody cells nucleus extracted by Minute TM Cytoplasmic and Nuclear Fractionation kit (SC-003, Inventbiotech, MN, USA).



Immunohistochemical analysis of paraffin-embedded Human brain. Antibody was diluted at 1:100(4° overnight). High-pressure and temperature Tris-EDTA,pH8.0 was used for antigen retrieval. Negative control (right) obtained from antibody was pre-absorbed by immunogen peptide.



Western blot analysis of lysates from HUVEC cells, using CDK5R2 Antibody. The lane on the right is blocked with the synthesized peptide.