

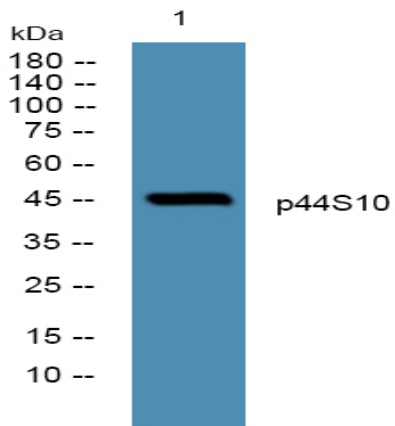
## p44S10 Polyclonal Antibody

<b>Catalog No :</b>	YT3517
<b>Reactivity :</b>	Human;Mouse;Rat
<b>Applications :</b>	WB;IHC;IF;ELISA
<b>Target :</b>	p44S10
<b>Fields :</b>	>>Proteasome;>>Alzheimer disease;>>Parkinson disease;>>Amyotrophic lateral sclerosis;>>Huntington disease;>>Spinocerebellar ataxia;>>Prion disease;>>Pathways of neurodegeneration - multiple diseases;>>Epstein-Barr virus infection
<b>Gene Name :</b>	PSMD6
<b>Protein Name :</b>	26S proteasome non-ATPase regulatory subunit 6
<b>Human Gene Id :</b>	9861
<b>Human Swiss Prot No :</b>	Q15008
<b>Mouse Gene Id :</b>	66413
<b>Mouse Swiss Prot No :</b>	Q99JI4
<b>Immunogen :</b>	The antiserum was produced against synthesized peptide derived from human PSMD6. AA range:201-250
<b>Specificity :</b>	p44S10 Polyclonal Antibody detects endogenous levels of p44S10 protein.
<b>Formulation :</b>	Liquid in PBS containing 50% glycerol, 0.5% BSA and 0.02% sodium azide.
<b>Source :</b>	Polyclonal, Rabbit,IgG
<b>Dilution :</b>	WB 1:500 - 1:2000. IHC 1:100 - 1:300. ELISA: 1:40000.. IF 1:50-200
<b>Purification :</b>	The antibody was affinity-purified from rabbit antiserum by affinity-chromatography using epitope-specific immunogen.

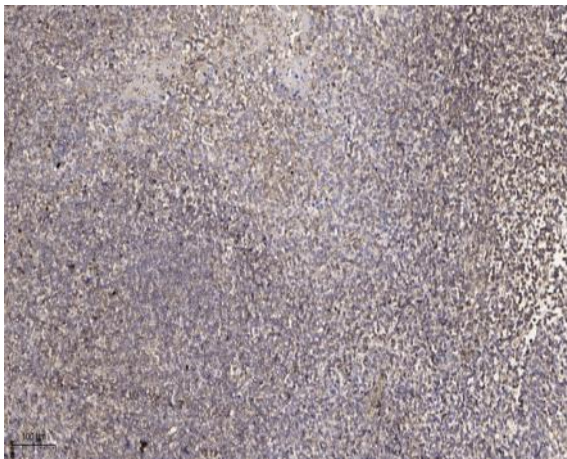
<b>Concentration :</b>	1 mg/ml
<b>Storage Stability :</b>	-15°C to -25°C/1 year(Do not lower than -25°C)
<b>Observed Band :</b>	45kD
<b>Cell Pathway :</b>	Proteasome;
<b>Background :</b>	This gene encodes a member of the protease subunit S10 family. The encoded protein is a subunit of the 26S proteasome which colocalizes with DNA damage foci and is involved in the ATP-dependent degradation of ubiquitinated proteins. Alternative splicing results in multiple transcript variants [provided by RefSeq, Nov 2012],
<b>Function :</b>	function:Acts as a regulatory subunit of the 26S proteasome which is involved in the ATP-dependent degradation of ubiquitinated proteins.,similarity:Belongs to the proteasome subunit S10 family.,similarity:Contains 1 PCI domain.,subunit:Component of the PA700 complex.,
<b>Subcellular Location :</b>	proteasome complex,nucleoplasm,cytosol,proteasome regulatory particle,proteasome accessory complex,extracellular exosome,
<b>Expression :</b>	Bone marrow,Lymph,Mammary cancer,Ovary,Placenta,Testis,
<b>Sort :</b>	11420
<b>No4 :</b>	1
<b>Host :</b>	Rabbit
<b>Modifications :</b>	Unmodified

---

## Products Images



Western blot analysis of lysates from K562 cells, primary antibody was diluted at 1:1000, 4° over night



Immunohistochemical analysis of paraffin-embedded human tonsil. 1, Antibody was diluted at 1:200(4° overnight). 2, Tris-EDTA,pH9.0 was used for antigen retrieval. 3,Secondary antibody was diluted at 1:200(room temperature, 30min).