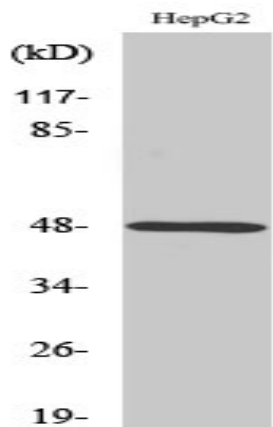


P2Y11 Polyclonal Antibody

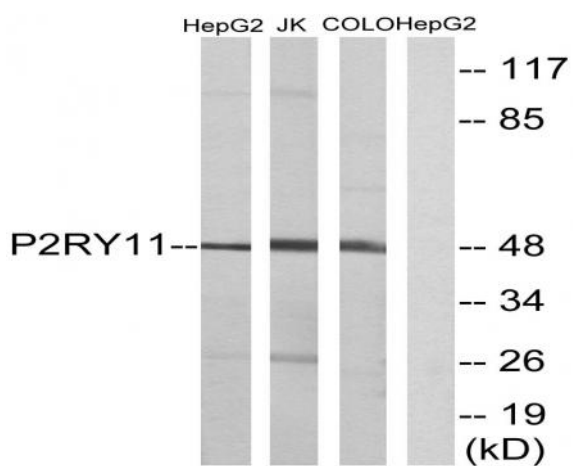
Catalog No :	YT3505
Reactivity :	Human;Rat;Mouse;
Applications :	WB;ELISA
Target :	P2Y11
Fields :	>>Neuroactive ligand-receptor interaction
Gene Name :	P2RY11
Protein Name :	P2Y purinoceptor 11
Human Gene Id :	5032
Human Swiss Prot No :	Q96G91
Immunogen :	The antiserum was produced against synthesized peptide derived from human P2RY11. AA range:140-189
Specificity :	P2Y11 Polyclonal Antibody detects endogenous levels of P2Y11 protein.
Formulation :	Liquid in PBS containing 50% glycerol, 0.5% BSA and 0.02% sodium azide.
Source :	Polyclonal, Rabbit,IgG
Dilution :	WB 1:500 - 1:2000. ELISA: 1:10000. Not yet tested in other applications.
Purification :	The antibody was affinity-purified from rabbit antiserum by affinity-chromatography using epitope-specific immunogen.
Concentration :	1 mg/ml
Storage Stability :	-15°C to -25°C/1 year(Do not lower than -25°C)
Observed Band :	48kD

Cell Pathway :	Neuroactive ligand-receptor interaction;
Background :	<p>The product of this gene belongs to the family of G-protein coupled receptors. This family has several receptor subtypes with different pharmacological selectivity, which overlaps in some cases, for various adenosine and uridine nucleotides. This receptor is coupled to the stimulation of the phosphoinositide and adenylyl cyclase pathways and behaves as a selective purinoceptor. Naturally occurring read-through transcripts, resulting from intergenic splicing between this gene and an immediately upstream gene (PPAN, encoding peter pan homolog), have been found. The PPAN-P2RY11 read-through mRNA is ubiquitously expressed and encodes a fusion protein that shares identity with each individual gene product. [provided by RefSeq, Jul 2008],</p>
Function :	<p>function:Receptor for ATP and ADP coupled to G-proteins that activate both phosphatidylinositol-calcium and adenylyl cyclase second messenger systems. Not activated by UTP or UDP.,induction:Increased by DMSO and retinoic acid.,miscellaneous:A putative trans-splicing which involves PPAN and P2RY11 gene regions produces a fusion protein.,similarity:Belongs to the G-protein coupled receptor 1 family.,tissue specificity:Highest expression in the spleen, lower in the small intestine.,</p>
Subcellular Location :	Cell membrane; Multi-pass membrane protein.
Expression :	Highest expression in liver and spleen.
Sort :	11394
No4 :	1
Host :	Rabbit
Modifications :	Unmodified

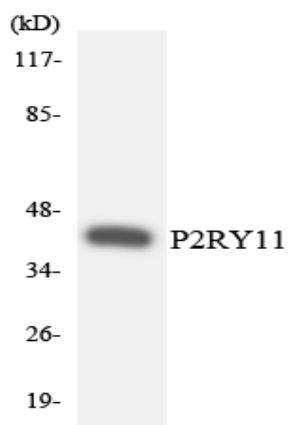
Products Images



Western Blot analysis of various cells using P2Y11 Polyclonal Antibody



Western blot analysis of lysates from HepG2, Jurkat, and COLO cells, using P2RY11 Antibody. The lane on the right is blocked with the synthesized peptide.



Western blot analysis of the lysates from K562 cells using P2RY11 antibody.