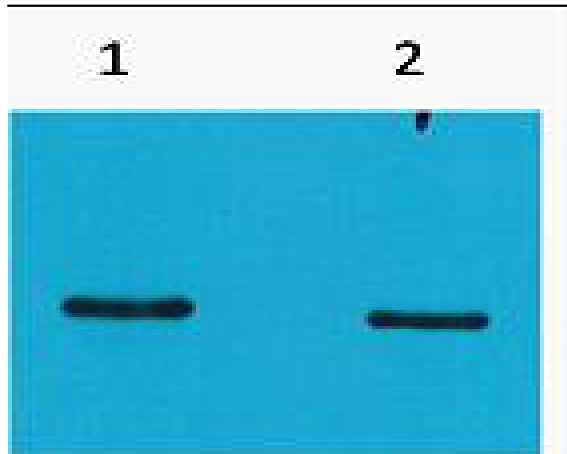


## SRT-Tag Monoclonal Antibody(4H9)

|                            |  |
|----------------------------|--|
| <b>Catalog No :</b>        | YM3154   |
| <b>Reactivity :</b>        | Species independent  |
| <b>Applications :</b>      | WB   |
| <b>Target :</b>            | SRT-Tag  |
| <b>Immunogen :</b>         | Recombinant Protein of SRT-Tag   |
| <b>Specificity :</b>       | The antibody detects SRT Tag recominant protein.   |
| <b>Formulation :</b>       | PBS, pH 7.4, containing 0.5%BSA, 0.02% sodium azide as Preservative and 50% Glycerol.  |
| <b>Source :</b>            | Monoclonal, Mouse  |
| <b>Dilution :</b>          | WB 1:5000  |
| <b>Purification :</b>      | The antibody was affinity-purified from mouse ascites by affinity-chromatography using specific immunogen.                           |
| <b>Storage Stability :</b> | -15°C to -25°C/1 year(Do not lower than -25°C)   |
| <b>Background :</b>        | The SRT-tag is a peptide epitope comprised of 10 amino acids derived from the crystalline surface layer protein of Rickettsia typhi. |
| <b>Sort :</b>              | 16625  |
| <b>No4 :</b>               | 1  |
| <b>Host :</b>              | Mouse  |
| <b>Modifications :</b>     | Unmodified   |

## Products Images



Western blot analysis of SRT-Recombinant protein, diluted at 1)  
1:5000 2) 1:10000