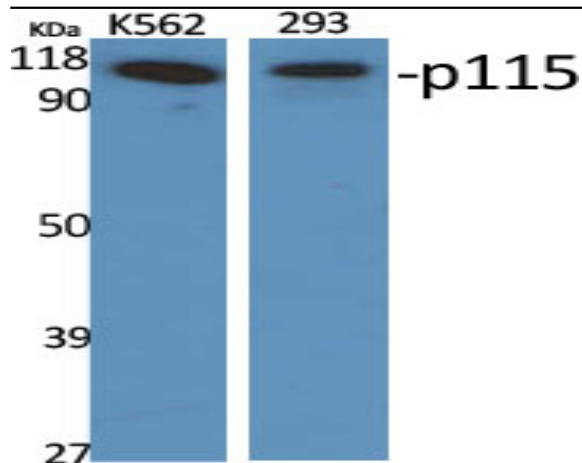


p115 Polyclonal Antibody

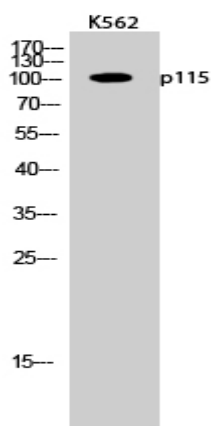
Catalog No :	YT3485
Reactivity :	Human;Rat;Mouse;
Applications :	WB;ELISA
Target :	p115
Gene Name :	USO1
Protein Name :	General vesicular transport factor p115
Human Gene Id :	8615
Human Swiss Prot No :	O60763
Mouse Swiss Prot No :	Q9Z1Z0
Immunogen :	The antiserum was produced against synthesized peptide derived from human USO1. AA range:913-962
Specificity :	p115 Polyclonal Antibody detects endogenous levels of p115 protein.
Formulation :	Liquid in PBS containing 50% glycerol, 0.5% BSA and 0.02% sodium azide.
Source :	Polyclonal, Rabbit,IgG
Dilution :	WB 1:500 - 1:2000. ELISA: 1:40000. Not yet tested in other applications.
Purification :	The antibody was affinity-purified from rabbit antiserum by affinity-chromatography using epitope-specific immunogen.
Concentration :	1 mg/ml
Storage Stability :	-15°C to -25°C/1 year(Do not lower than -25°C)
Observed Band :	108kD

Background :	The protein encoded by this gene is a peripheral membrane protein which recycles between the cytosol and the Golgi apparatus during interphase. It is regulated by phosphorylation: dephosphorylated protein associates with the Golgi membrane and dissociates from the membrane upon phosphorylation. Ras-associated protein 1 recruits this protein to coat protein complex II (COPII) vesicles during budding from the endoplasmic reticulum, where it interacts with a set of COPII vesicle-associated SNAREs to form a cis-SNARE complex that promotes targeting to the Golgi apparatus. Alternative splicing results in multiple transcript variants. [provided by RefSeq, Feb 2014],
Function :	domain:Composed of a globular head, an elongated tail (coiled-coil) and a highly acidic C-terminal domain.,function:General vesicular transport factor required for intercisternal transport in the Golgi stack; it is required for transcytotic fusion and/or subsequent binding of the vesicles to the target membrane. May well act as a vesicular anchor by interacting with the target membrane and holding the vesicular and target membranes in proximity.,PTM:Phosphorylated in a cell cycle-specific manner; phosphorylated in interphase but not in mitotic cells. Dephosphorylated protein associates with the Golgi membrane; phosphorylation promotes dissociation.,similarity:Belongs to the VDP/USO1/EDE1 family.,subcellular location:Recycles between the cytosol and the Golgi apparatus during interphase.,
Subcellular Location :	Cytoplasm, cytosol . Golgi apparatus membrane ; Peripheral membrane protein . Recycles between the cytosol and the Golgi apparatus during interphase. During interphase, the phosphorylated form is found exclusively in cytosol; the unphosphorylated form is associated with Golgi apparatus membranes. .
Expression :	Epithelium,Human skeletal muscle,Liver,Uterus,
Tag :	orthogonal
Sort :	11349
No4 :	1
Host :	Rabbit
Modifications :	Unmodified

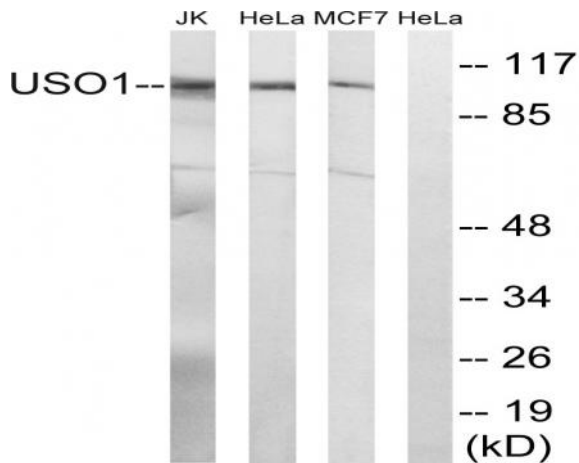
Products Images



Western Blot analysis of various cells using p115 Polyclonal Antibody diluted at 1:2000



Western Blot analysis of K562 cells using p115 Polyclonal Antibody diluted at 1:2000



Western blot analysis of lysates from MCF-7, HeLa, and Jurkat cells, using USO1 Antibody. The lane on the right is blocked with the synthesized peptide.