

## Oxr1 Polyclonal Antibody

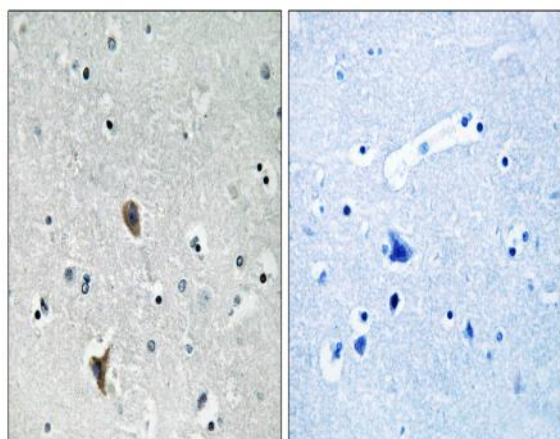
<b>Catalog No :</b>	YT3481
<b>Reactivity :</b>	Human;Mouse;Rat
<b>Applications :</b>	WB;IHC;IF;ELISA
<b>Target :</b>	Oxr1
<b>Gene Name :</b>	OXR1
<b>Protein Name :</b>	Oxidation resistance protein 1
<b>Human Gene Id :</b>	55074
<b>Human Swiss Prot No :</b>	Q8N573
<b>Mouse Gene Id :</b>	170719
<b>Mouse Swiss Prot No :</b>	Q4KMM3
<b>Rat Gene Id :</b>	117520
<b>Rat Swiss Prot No :</b>	Q4V8B0
<b>Immunogen :</b>	The antiserum was produced against synthesized peptide derived from human OXR1. AA range:472-521
<b>Specificity :</b>	Oxr1 Polyclonal Antibody detects endogenous levels of Oxr1 protein.
<b>Formulation :</b>	Liquid in PBS containing 50% glycerol, 0.5% BSA and 0.02% sodium azide.
<b>Source :</b>	Polyclonal, Rabbit,IgG
<b>Dilution :</b>	WB 1:500 - 1:2000. IHC 1:100 - 1:300. ELISA: 1:40000.. IF 1:50-200
<b>Purification :</b>	The antibody was affinity-purified from rabbit antiserum by affinity-chromatography using epitope-specific immunogen.

---

<b>Concentration :</b>	1 mg/ml
<b>Storage Stability :</b>	-15°C to -25°C/1 year(Do not lower than -25°C)
<b>Observed Band :</b>	85kD
<b>Background :</b>	function:May be involved in protection from oxidative damage.,induction:By heat and oxidative stress.,PTM:Phosphorylated upon DNA damage, probably by ATM or ATR.,similarity:Belongs to the OXR1 family.,similarity:Contains 1 GRAM domain.,similarity:Contains 1 LysM repeat.,similarity:Contains 1 TLD domain.,
<b>Function :</b>	function:May be involved in protection from oxidative damage.,induction:By heat and oxidative stress.,PTM:Phosphorylated upon DNA damage, probably by ATM or ATR.,similarity:Belongs to the OXR1 family.,similarity:Contains 1 GRAM domain.,similarity:Contains 1 LysM repeat.,similarity:Contains 1 TLD domain.,
<b>Subcellular Location :</b>	Mitochondrion .
<b>Expression :</b>	Cerebellum,Embryo,Epithelium,Lymph,Lymph node,Mammary gland,Neuroblastoma,Prostate,
<b>Sort :</b>	11344
<b>No4 :</b>	1
<b>Host :</b>	Rabbit
<b>Modifications :</b>	Unmodified

---

## Products Images



Immunohistochemistry analysis of paraffin-embedded human brain tissue, using OXR1 Antibody. The picture on the right is blocked with the synthesized peptide.