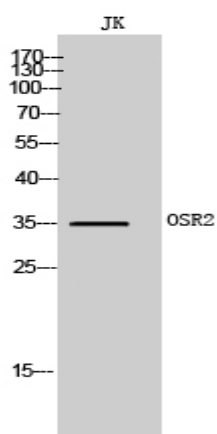


OSR2 Polyclonal Antibody

Catalog No :	YT3474
Reactivity :	Human;Mouse;Rat
Applications :	WB;ELISA
Target :	OSR2
Gene Name :	OSR2
Protein Name :	Protein odd-skipped-related 2
Human Gene Id :	116039
Human Swiss Prot No :	Q8N2R0
Mouse Gene Id :	107587
Mouse Swiss Prot No :	Q91ZD1
Rat Gene Id :	315039
Rat Swiss Prot No :	Q6AY34
Immunogen :	Synthesized peptide derived from OSR2 . at AA range: 60-140
Specificity :	OSR2 Polyclonal Antibody detects endogenous levels of OSR2 protein.
Formulation :	Liquid in PBS containing 50% glycerol, 0.5% BSA and 0.02% sodium azide.
Source :	Polyclonal, Rabbit,IgG
Dilution :	WB 1:500 - 1:2000. ELISA: 1:40000. Not yet tested in other applications.
Purification :	The antibody was affinity-purified from rabbit antiserum by affinity-chromatography using epitope-specific immunogen.

Concentration :	1 mg/ml
Storage Stability :	-15°C to -25°C/1 year(Do not lower than -25°C)
Observed Band :	35kD
Background :	odd-skipped related transcription factor 2(OSR2) Homo sapiens OSR2 is a mammalian homolog of the Drosophila odd-skipped family of transcription factors (Lan et al., 2004 [PubMed 15175245]).[supplied by OMIM, Mar 2008],
Function :	similarity:Belongs to the Odd C2H2-type zinc-finger protein family.,similarity:Contains 5 C2H2-type zinc fingers.,
Subcellular Location :	Nucleus .
Expression :	Embryo,Kidney,
Sort :	11324
No4 :	1
Host :	Rabbit
Modifications :	Unmodified

Products Images



Western Blot analysis of JK cells using OSR2 Polyclonal Antibody cells nucleus extracted by Minute TM Cytoplasmic and Nuclear Fractionation kit (SC-003, Inventbiotech, MN, USA).