

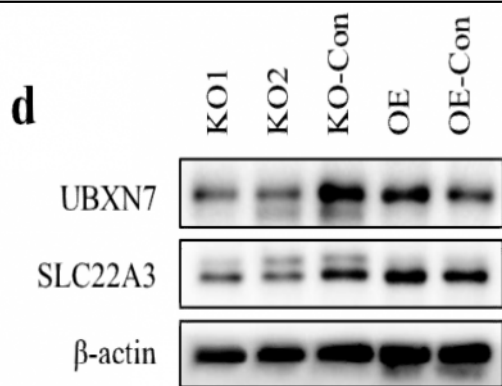
## OCT3 Polyclonal Antibody

<b>Catalog No :</b>	YT3232
<b>Reactivity :</b>	Human;Rat;Mouse;
<b>Applications :</b>	WB;ELISA
<b>Target :</b>	OCT3
<b>Fields :</b>	>>Choline metabolism in cancer
<b>Gene Name :</b>	SLC22A3
<b>Protein Name :</b>	Solute carrier family 22 member 3
<b>Human Gene Id :</b>	6581
<b>Human Swiss Prot No :</b>	O75751
<b>Mouse Swiss Prot No :</b>	Q9WTW5
<b>Immunogen :</b>	The antiserum was produced against synthesized peptide derived from human SLC22A3. AA range:275-324
<b>Specificity :</b>	OCT3 Polyclonal Antibody detects endogenous levels of 40819 protein.
<b>Formulation :</b>	Liquid in PBS containing 50% glycerol, 0.5% BSA and 0.02% sodium azide.
<b>Source :</b>	Polyclonal, Rabbit,IgG
<b>Dilution :</b>	WB 1:500 - 1:2000. ELISA: 1:10000. Not yet tested in other applications.
<b>Purification :</b>	The antibody was affinity-purified from rabbit antiserum by affinity-chromatography using epitope-specific immunogen.
<b>Concentration :</b>	1 mg/ml
<b>Storage Stability :</b>	-15°C to -25°C/1 year(Do not lower than -25°C)

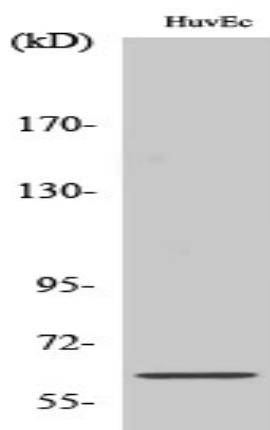
<b>Observed Band :</b>	61kD
<b>Background :</b>	Polyspecific organic cation transporters in the liver, kidney, intestine, and other organs are critical for elimination of many endogenous small organic cations as well as a wide array of drugs and environmental toxins. This gene is one of three similar cation transporter genes located in a cluster on chromosome 6. The encoded protein contains twelve putative transmembrane domains and is a plasma integral membrane protein. [provided by RefSeq, Jul 2008],
<b>Function :</b>	function:Mediates potential-dependent transport of a variety of organic cations. May play a significant role in the disposition of cationic neurotoxins and neurotransmitters in the brain.,similarity:Belongs to the major facilitator superfamily. Organic cation transporter family.,tissue specificity:Expressed in placenta, skeletal muscle, prostate, aorta, liver, fetal lung, salivary gland, adrenal gland, kidney and brain cortex. No expression detected in spleen.,
<b>Subcellular Location :</b>	Membrane; Multi-pass membrane protein.
<b>Expression :</b>	Expressed in placenta, skeletal muscle, prostate, aorta, liver, fetal lung, salivary gland, adrenal gland, kidney and brain cortex. No expression detected in spleen.
<b>Tag :</b>	orthogonal
<b>Sort :</b>	11053
<b>No4 :</b>	1
<b>Host :</b>	Rabbit
<b>Modifications :</b>	Unmodified

---

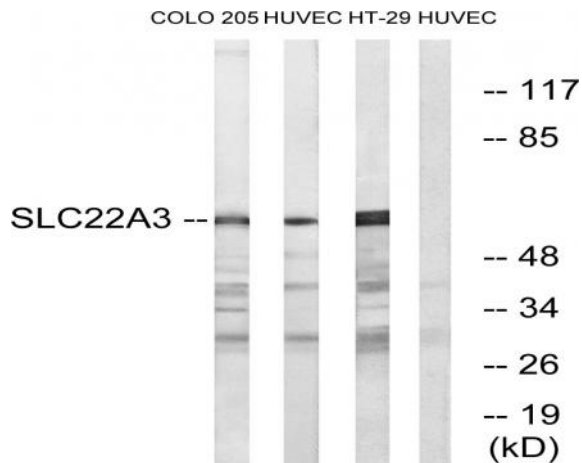
## Products Images



CPSF3 Promotes Pre-mRNA Splicing and Prevents CircRNA Cyclization in Hepatocellular Carcinoma. Cancers Qubo Zhu WB Human 1:1000 HepG2 cell, HuH7 cell



Western Blot analysis of various cells using OCT3 Polyclonal Antibody



Western blot analysis of lysates from HUVEC, COLO, and HT-29 cells, using SLC22A3 Antibody. The lane on the right is blocked with the synthesized peptide.