

## Oct-1 Polyclonal Antibody

<b>Catalog No :</b>	YT3230
<b>Reactivity :</b>	Human;Mouse;Rat
<b>Applications :</b>	WB;IHC;IF;ELISA
<b>Target :</b>	OCT1
<b>Fields :</b>	>>Herpes simplex virus 1 infection;>>Lipid and atherosclerosis
<b>Gene Name :</b>	POU2F1
<b>Protein Name :</b>	POU domain class 2 transcription factor 1
<b>Human Gene Id :</b>	5451
<b>Human Swiss Prot No :</b>	P14859
<b>Mouse Gene Id :</b>	18986
<b>Mouse Swiss Prot No :</b>	P25425
<b>Immunogen :</b>	The antiserum was produced against synthesized peptide derived from human OCT1. AA range:41-90
<b>Specificity :</b>	Oct-1 Polyclonal Antibody detects endogenous levels of 40817 protein.
<b>Formulation :</b>	Liquid in PBS containing 50% glycerol, 0.5% BSA and 0.02% sodium azide.
<b>Source :</b>	Polyclonal, Rabbit,IgG
<b>Dilution :</b>	WB 1:500 - 1:2000. IHC 1:100 - 1:300. ELISA: 1:5000.. IF 1:50-200
<b>Purification :</b>	The antibody was affinity-purified from rabbit antiserum by affinity-chromatography using epitope-specific immunogen.
<b>Concentration :</b>	1 mg/ml

**Storage Stability :** -15°C to -25°C/1 year(Do not lower than -25°C)

**Observed Band :** 76kD

**Background :** The OCT1 transcription factor was among the first identified members of the POU transcription factor family (summarized by Sturm et al., 1993 [PubMed 8314572]). Members of this family contain the POU domain, a 160-amino acid region necessary for DNA binding to the octameric sequence ATGCAAAT.[supplied by OMIM, Jul 2010],

**Function :** function:Transcription factor that binds to the octamer motif (5'-ATTTGCAT-3') and activates the promoters of the genes for some small nuclear RNAs (snRNA) and of genes such as those for histone H2B and immunoglobulins. Modulates transcription transactivation by NR3C1, AR and PGR.,PTM:Phosphorylated by PRKDC.,similarity:Belongs to the POU transcription factor family. Class-2 subfamily.,similarity:Contains 1 homeobox DNA-binding domain.,similarity:Contains 1 POU-specific domain.,subunit:Interacts with NR3C1, AR, PGR and HCFC1.,tissue specificity:Ubiquitous. Isoform 2 is lymphocyte-specific.,

**Subcellular Location :** Nucleus.

**Expression :** Ubiquitous. Isoform 2 is lymphocyte-specific.

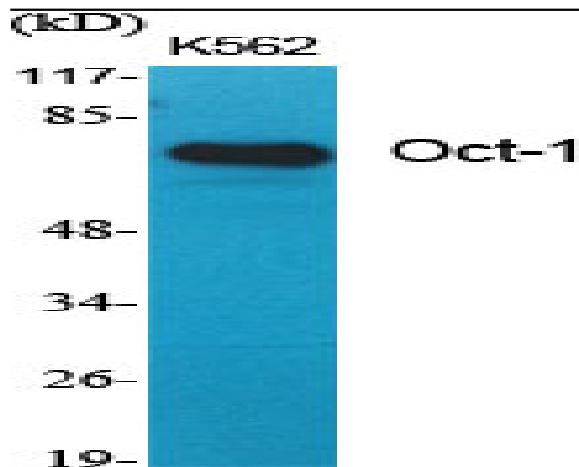
**Sort :** 11046

**No4 :** 1

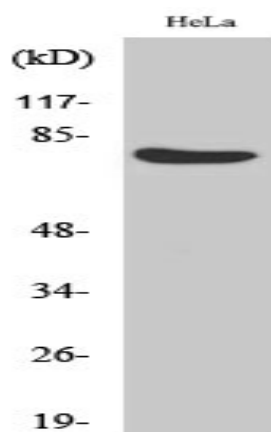
**Host :** Rabbit

**Modifications :** Unmodified

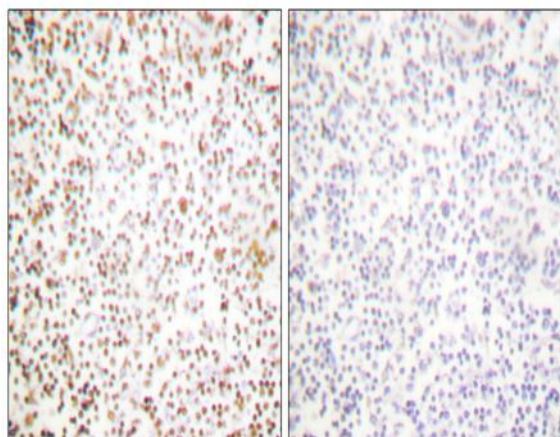
## Products Images



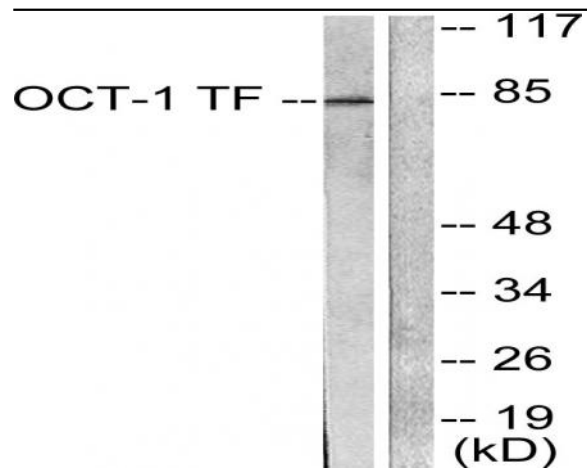
Western Blot analysis of various cells using Oct-1 Polyclonal Antibody diluted at 1:1000 cells nucleus extracted by Minute TM Cytoplasmic and Nuclear Fractionation kit (SC-003, Inventbiotech, MN, USA).



Western Blot analysis of HeLa cells using Oct-1 Polyclonal Antibody diluted at 1:1000 cells nucleus extracted by Minute TM Cytoplasmic and Nuclear Fractionation kit (SC-003, Inventbiotech, MN, USA).



Immunohistochemistry analysis of paraffin-embedded human lymph node tissue, using OCT1 Antibody. The picture on the right is blocked with the synthesized peptide.



Western blot analysis of lysates from HeLa cells, using OCT1 Antibody. The lane on the right is blocked with the synthesized peptide.