

OBCAM Polyclonal Antibody

Catalog No :	YT3225
Reactivity :	Human;Mouse;Rat;Monkey
Applications :	WB;ELISA
Target :	OBCAM
Gene Name :	OPCML
Protein Name :	Opioid-binding protein/cell adhesion molecule
Human Gene Id :	4978
Human Swiss Prot No :	Q14982
Rat Gene Id :	116597
Rat Swiss Prot No :	P32736
Immunogen :	The antiserum was produced against synthesized peptide derived from human OBCAM. AA range:152-201
Specificity :	OBCAM Polyclonal Antibody detects endogenous levels of OBCAM protein.
Formulation :	Liquid in PBS containing 50% glycerol, 0.5% BSA and 0.02% sodium azide.
Source :	Polyclonal, Rabbit,IgG
Dilution :	WB 1:500 - 1:2000. ELISA: 1:10000. Not yet tested in other applications.
Purification :	The antibody was affinity-purified from rabbit antiserum by affinity-chromatography using epitope-specific immunogen.
Concentration :	1 mg/ml
Storage Stability :	-15°C to -25°C/1 year(Do not lower than -25°C)

Observed Band : 58kD

Background : This gene encodes a member of the IgLON subfamily in the immunoglobulin protein superfamily of proteins. The encoded preprotein is proteolytically processed to generate the mature protein. This protein is localized in the plasma membrane and may have an accessory role in opioid receptor function. This gene has an ortholog in rat and bovine. The opioid binding-cell adhesion molecule encoded by the rat gene binds opioid alkaloids in the presence of acidic lipids, exhibits selectivity for mu ligands and acts as a GPI-anchored protein. Since the encoded protein is highly conserved in species during evolution, it may have a fundamental role in mammalian systems. Alternative splicing results in multiple transcript variants, at least one of which encodes an isoform that is proteolytically processed. [provided by RefSeq, Jan 2016],

Function : disease:Defects in OPCML are associated with ovarian cancer [MIM:167000]. Ovarian cancer is the leading cause of death from gynecologic malignancy. It is characterized by advanced presentation with loco-regional dissemination in the peritoneal cavity and the rare incidence of visceral metastases. These typical features relate to the biology of the disease, which is a principal determinant of outcome.,function:Binds opioids in the presence of acidic lipids; probably involved in cell contact.,similarity:Belongs to the immunoglobulin superfamily. IgLON family.,similarity:Contains 3 Ig-like C2-type (immunoglobulin-like) domains.,

Subcellular Location : Cell membrane ; Lipid-anchor, GPI-anchor .

Expression : Amygdala,Brain,Fetal brain,Human amygdala,Occipital

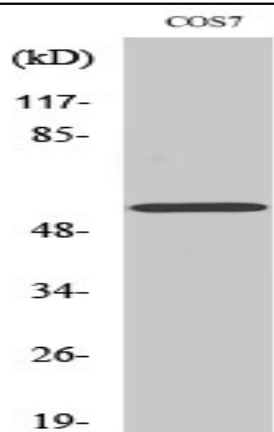
Sort : 11035

No4 : 1

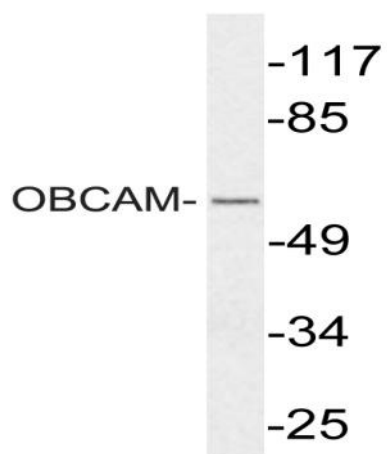
Host : Rabbit

Modifications : Unmodified

Products Images



Western Blot analysis of various cells using OBCAM Polyclonal Antibody diluted at 1:1000



Western blot analysis of lysate from COS7 cells, using OBCAM antibody.