

OATP1 Polyclonal Antibody

Catalog No :	YT3221
Reactivity :	Human
Applications :	WB;IHC;IF;ELISA
Target :	OATP1
Fields :	>>Bile secretion
Gene Name :	SLCO1A2
Protein Name :	Solute carrier organic anion transporter family member 1A2
Human Gene Id :	6579
Human Swiss Prot No :	P46721
Immunogen :	The antiserum was produced against synthesized peptide derived from human SLCO1A2. AA range:251-300
Specificity :	OATP1 Polyclonal Antibody detects endogenous levels of OATP1 protein.
Formulation :	Liquid in PBS containing 50% glycerol, 0.5% BSA and 0.02% sodium azide.
Source :	Polyclonal, Rabbit,IgG
Dilution :	WB 1:500 - 1:2000. IHC 1:100 - 1:300. ELISA: 1:20000.. IF 1:50-200
Purification :	The antibody was affinity-purified from rabbit antiserum by affinity-chromatography using epitope-specific immunogen.
Concentration :	1 mg/ml
Storage Stability :	-15°C to -25°C/1 year(Do not lower than -25°C)
Observed Band :	80kD

Background : This gene encodes a sodium-independent transporter which mediates cellular uptake of organic ions in the liver. Its substrates include bile acids, bromosulphophthalein, and some steroidal compounds. The protein is a member of the SLC21A family of solute carriers. Alternative splicing of this gene results in multiple transcript variants. [provided by RefSeq, Dec 2008],

Function : function:Mediates the Na(+)-independent transport of organic anions such as sulfobromophthalein (BSP) and conjugated (taurocholate) and unconjugated (cholate) bile acids.,similarity:Belongs to the organo anion transporter (TC 2.A.60) family.,

Subcellular Location : Cell membrane; Multi-pass membrane protein.

Expression : Brain,Liver,Teratocarcinoma,

Tag : hot

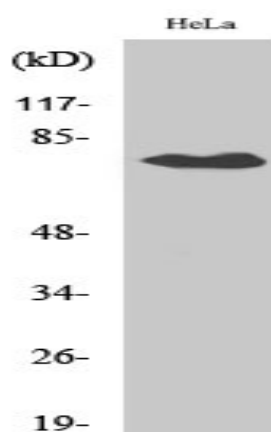
Sort : 11030

No4 : 1

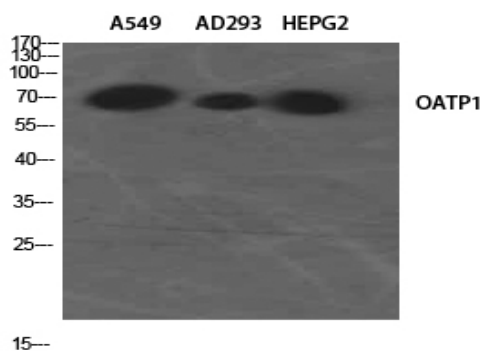
Host : Rabbit

Modifications : Unmodified

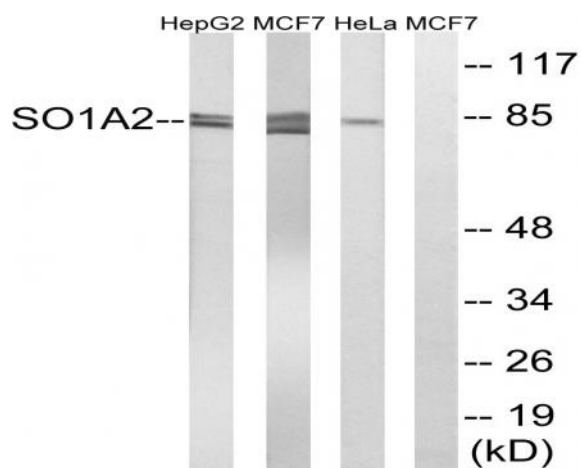
Products Images



Western Blot analysis of various cells using OATP1 Polyclonal Antibody diluted at 1:2000



Western Blot analysis of A549 AD293 HEPG2 using OATP1 Polyclonal Antibody. Antibody was diluted at 1:2000



Western blot analysis of lysates from HeLa, MCF-7, and HepG2 cells, using SLCO1A2 Antibody. The lane on the right is blocked with the synthesized peptide.