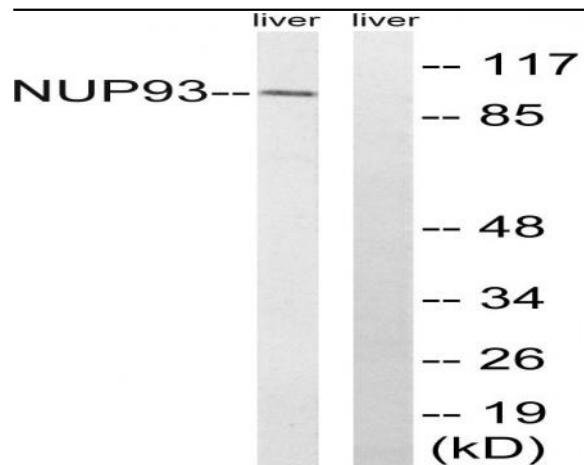


Nup93 Polyclonal Antibody

Catalog No :	YT3212
Reactivity :	Human;Mouse;Rat
Applications :	WB;ELISA
Target :	Nup93
Fields :	>>Nucleocytoplasmic transport;>>Amyotrophic lateral sclerosis
Gene Name :	NUP93
Protein Name :	Nuclear pore complex protein Nup93
Human Gene Id :	9688
Human Swiss Prot No :	Q8N1F7
Mouse Gene Id :	71805
Mouse Swiss Prot No :	Q8BJ71
Rat Gene Id :	291874
Rat Swiss Prot No :	Q66HC5
Immunogen :	The antiserum was produced against synthesized peptide derived from human NUP93. AA range:221-270
Specificity :	Nup93 Polyclonal Antibody detects endogenous levels of Nup93 protein.
Formulation :	Liquid in PBS containing 50% glycerol, 0.5% BSA and 0.02% sodium azide.
Source :	Polyclonal, Rabbit,IgG
Dilution :	WB 1:500 - 1:2000. ELISA: 1:40000. Not yet tested in other applications.

Purification :	The antibody was affinity-purified from rabbit antiserum by affinity-chromatography using epitope-specific immunogen.
Concentration :	1 mg/ml
Storage Stability :	-15°C to -25°C/1 year(Do not lower than -25°C)
Observed Band :	93kD
Background :	function:Part of the nucleoporin complex; required for correct nuclear pore assembly.,similarity:Belongs to the nucleoporin interacting component (NIC) family.,subcellular location:Localizes at the nuclear basket and at or near the nuclear entry to the gated channel of the pore.,subunit:Component of the p62 complex, a complex composed of NUP62, NUP54. Interacts also with NUP205.,
Function :	function:Part of the nucleoporin complex; required for correct nuclear pore assembly.,similarity:Belongs to the nucleoporin interacting component (NIC) family.,subcellular location:Localizes at the nuclear basket and at or near the nuclear entry to the gated channel of the pore.,subunit:Component of the p62 complex, a complex composed of NUP62, NUP54. Interacts also with NUP205.,
Subcellular Location :	Nucleus membrane ; Peripheral membrane protein . Nucleus, nuclear pore complex . Nucleus envelope . Localizes at the nuclear basket and at or near the nuclear entry to the gated channel of the pore. .
Expression :	Amygdala,Bone marrow,Brain,Epithelium,Skin,
Sort :	11007
No4 :	1
Host :	Rabbit
Modifications :	Unmodified

Products Images



Western blot analysis of lysates from rat liver cells, using NUP93 Antibody. The lane on the right is blocked with the synthesized peptide.