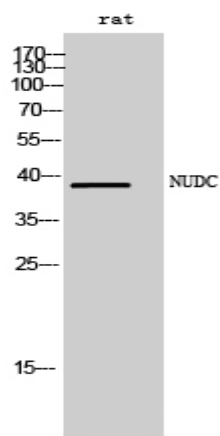


NUDC Polyclonal Antibody

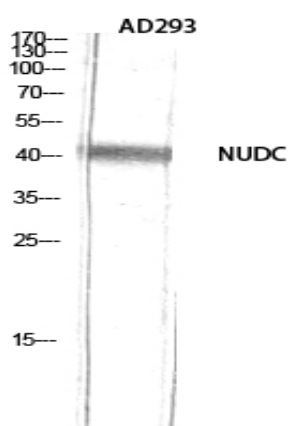
Catalog No :	YT3209
Reactivity :	Human;Mouse;Rat
Applications :	WB;IHC;IF;ELISA
Target :	NUDC
Gene Name :	NUDC
Protein Name :	Nuclear migration protein nudC
Human Gene Id :	10726
Human Swiss Prot No :	Q9Y266
Mouse Gene Id :	18221
Mouse Swiss Prot No :	O35685
Rat Gene Id :	29648
Rat Swiss Prot No :	Q63525
Immunogen :	The antiserum was produced against synthesized peptide derived from human NudC. AA range:282-331
Specificity :	NUDC Polyclonal Antibody detects endogenous levels of NUDC protein.
Formulation :	Liquid in PBS containing 50% glycerol, 0.5% BSA and 0.02% sodium azide.
Source :	Polyclonal, Rabbit,IgG
Dilution :	WB 1:500 - 1:2000. IHC 1:100 - 1:300. ELISA: 1:10000.. IF 1:50-200
Purification :	The antibody was affinity-purified from rabbit antiserum by affinity-chromatography using epitope-specific immunogen.

Concentration :	1 mg/ml
Storage Stability :	-15°C to -25°C/1 year(Do not lower than -25°C)
Observed Band :	38kD
Background :	This gene encodes a nuclear distribution protein that plays an essential role in mitosis and cytokinesis. The encoded protein is involved in spindle formation during mitosis and in microtubule organization during cytokinesis. Pseudogenes of this gene are found on chromosome 2. [provided by RefSeq, Feb 2012],
Function :	function:Plays a role in neurogenesis and neuronal migration (By similarity). Necessary for correct formation of mitotic spindles and chromosome separation during mitosis. Necessary for cytokinesis and cell proliferation.,induction:Up-regulated in actively dividing hematopoietic precursor cells. Up-regulated in cultured erythroleukemia TF-1 cells by granulocyte-macrophage colony-stimulating factor. Strongly down-regulated during maturation of erythroid precursor cells.,PTM:Reversibly phosphorylated on serine residues during the M phase of the cell cycle. Phosphorylation on Ser-274 and Ser-326 is necessary for correct formation of mitotic spindles and chromosome separation during mitosis. Phosphorylated by PLK and other kinases.,similarity:Belongs to the nudC family.,similarity:Contains 1 CS domain.,subcellular location:In a filamentous pattern adjacent to the nucleus of migrating cerebel
Subcellular Location :	Cytoplasm, cytoskeleton. Nucleus . Cytoplasm, cytoskeleton, spindle . Midbody . In a filamentous pattern adjacent to the nucleus of migrating cerebellar granule cells. Colocalizes with tubulin and dynein and with the microtubule organizing center. Distributed throughout the cytoplasm of non-migrating cells. A small proportion is nuclear, in a punctate pattern. Localizes to the mitotic spindle in a EML4-dependent manner (PubMed:25789526). .
Expression :	Ubiquitous. Highly expressed in fetal liver, kidney, lung and brain. Highly expressed in adult pancreas, kidney, skeletal muscle, liver, lung, placenta, prostate, brain and heart.
Sort :	10997
No4 :	1
Host :	Rabbit
Modifications :	Unmodified

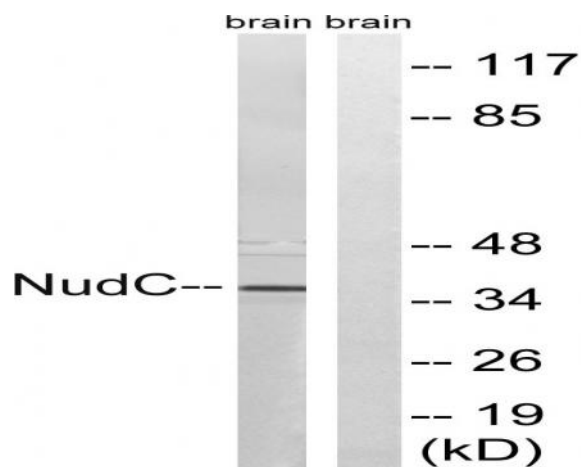
Products Images



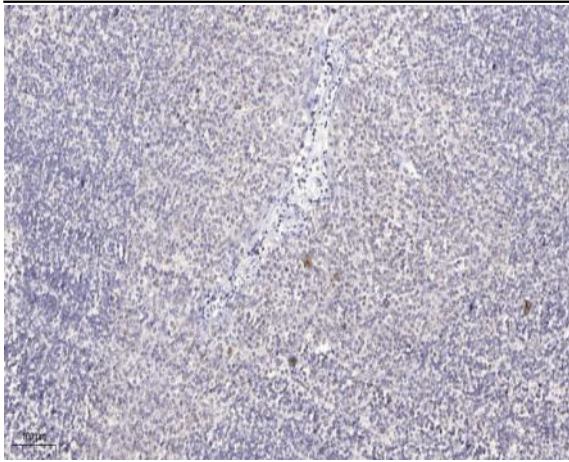
Western Blot analysis of rat cells using NUDC Polyclonal Antibody diluted at 1:2000



Western Blot analysis of AD293 using NUDC Polyclonal Antibody diluted at 1:2000



Western blot analysis of lysates from rat brain cells, using NudC Antibody. The lane on the right is blocked with the synthesized peptide.



Immunohistochemical analysis of paraffin-embedded human tonsil. 1, Antibody was diluted at 1:200(4 ° overnight). 2, Tris-EDTA,pH9.0 was used for antigen retrieval. 3,Secondary antibody was diluted at 1:200(room temperature, 30min).