

eIF4A1 Monoclonal Antibody(M8)

Catalog No :	YM3136
Reactivity :	Human;Mouse;Rat
Applications :	WB;IHC;IF
Target :	eIF4A1
Gene Name :	EIF4A1
Protein Name :	Eukaryotic initiation factor 4A-I
Human Gene Id :	1973
Human Swiss Prot No :	P60842
Mouse Gene Id :	13681
Mouse Swiss Prot No :	P60843
Immunogen :	Synthetic Peptide of eIF4A1
Specificity :	The antibody detects endogenous eIF4A1 protein.
Formulation :	PBS, pH 7.4, containing 0.5%BSA, 0.02% sodium azide as Preservative and 50% Glycerol.
Source :	Monoclonal, Mouse
Dilution :	WB 1:1000-3000 IF 1:100-200 IHC 1:50-300
Purification :	The antibody was affinity-purified from mouse ascites by affinity-chromatography using specific immunogen.
Storage Stability :	-15°C to -25°C/1 year(Do not lower than -25°C)
Observed Band :	48kD

Background : function:ATP-dependent RNA helicase which is a subunit of the eIF4F complex involved in cap recognition and is required for mRNA binding to ribosome. In the current model of translation initiation, eIF4A unwinds RNA secondary structures in the 5'-UTR of mRNAs which is necessary to allow efficient binding of the small ribosomal subunit, and subsequent scanning for the initiator codon.,similarity:Belongs to the DEAD box helicase family.,similarity:Belongs to the DEAD box helicase family. eIF4A subfamily.,similarity:Contains 1 helicase ATP-binding domain.,similarity:Contains 1 helicase C-terminal domain.,subunit:eIF4F is a multi-subunit complex, the composition of which varies with external and internal environmental conditions. It is composed of at least EIF4A, EIF4E and EIF4G1/EIF4G3. Interacts with PAIP1, EIF4E and RENT2. Found in a complex with XPO7, EIF4A1, ARHGAP1, VPS26A, VPS29, VPS35 and SFN. May interact with NOM1.,

Function : function:ATP-dependent RNA helicase which is a subunit of the eIF4F complex involved in cap recognition and is required for mRNA binding to ribosome. In the current model of translation initiation, eIF4A unwinds RNA secondary structures in the 5'-UTR of mRNAs which is necessary to allow efficient binding of the small ribosomal subunit, and subsequent scanning for the initiator codon.,similarity:Belongs to the DEAD box helicase family.,similarity:Belongs to the DEAD box helicase family. eIF4A subfamily.,similarity:Contains 1 helicase ATP-binding domain.,similarity:Contains 1 helicase C-terminal domain.,subunit:eIF4F is a multi-subunit complex, the composition of which varies with external and internal environmental conditions. It is composed of at least EIF4A, EIF4E and EIF4G1/EIF4G3. Interacts with PAIP1, EIF4E and RENT2. Found in a complex with XPO7, EIF4A1, ARHGAP1, VPS26A, VPS29, VPS35 and SFN. May interact with NOM1.,

Subcellular Location : nucleus,cytoplasm,cytosol,membrane,eukaryotic translation initiation factor 4F complex,extracellular matrix,extracellular exosome,

Expression : Bone marrow,Lung,Spleen,

Tag : hot

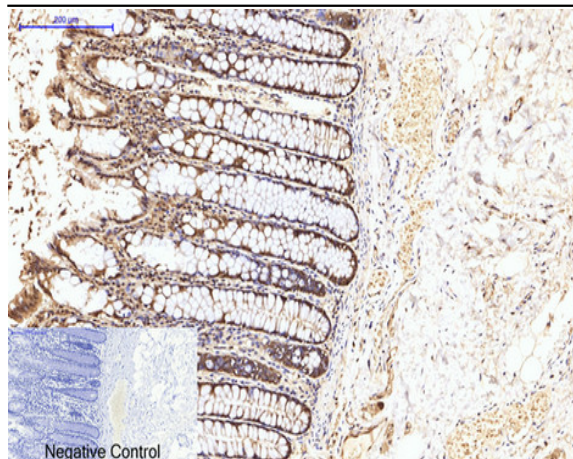
Sort : 5476

No4 : 1

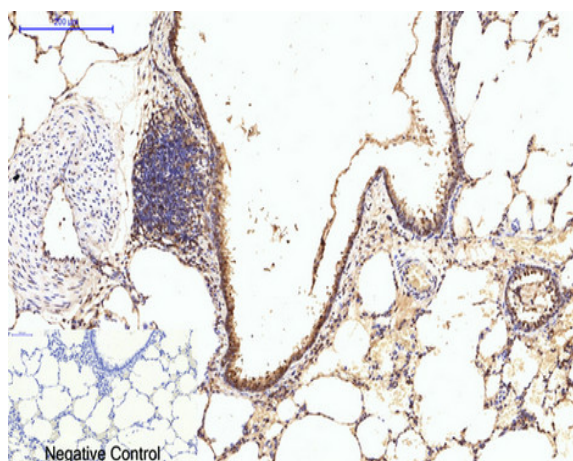
Host : Mouse

Modifications : Unmodified

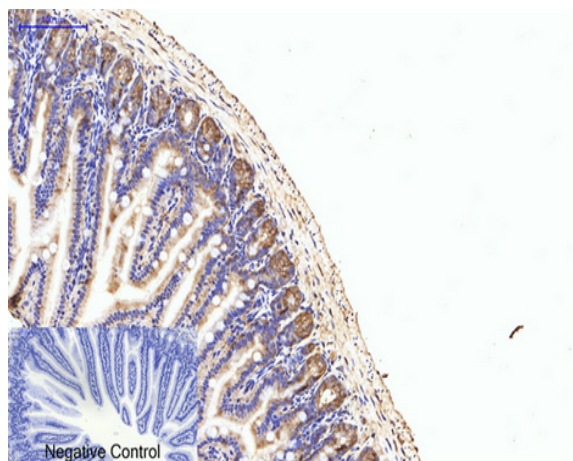
Products Images



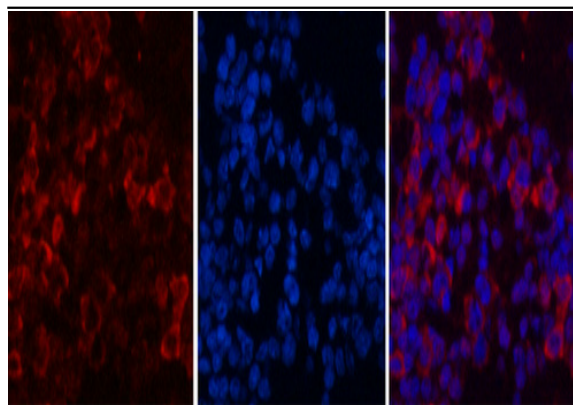
Immunohistochemical analysis of paraffin-embedded Human colon-cancer tissue. 1,eIF4A1 Monoclonal Antibody(M8) was diluted at 1:200(4°C,overnight). 2, Sodium citrate pH 6.0 was used for antibody retrieval(>98°C,20min). 3,Secondary antibody was diluted at 1:200(room temperature, 30min). Negative control was used by secondary antibody only.



Immunohistochemical analysis of paraffin-embedded Rat-lung tissue. 1,eIF4A1 Monoclonal Antibody(M8) was diluted at 1:200(4°C,overnight). 2, Sodium citrate pH 6.0 was used for antibody retrieval(>98°C,20min). 3,Secondary antibody was diluted at 1:200(room temperature, 30min). Negative control was used by secondary antibody only.



Immunohistochemical analysis of paraffin-embedded Mouse colon tissue. 1,eIF4A1 Monoclonal Antibody(M8) was diluted at 1:200(4°C,overnight). 2, Sodium citrate pH 6.0 was used for antibody retrieval(>98°C,20min). 3,Secondary antibody was diluted at 1:200(room temperature, 30min). Negative control was used by secondary antibody only.

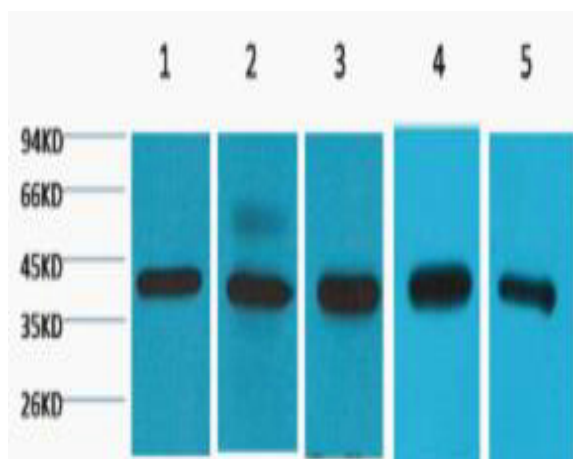


A

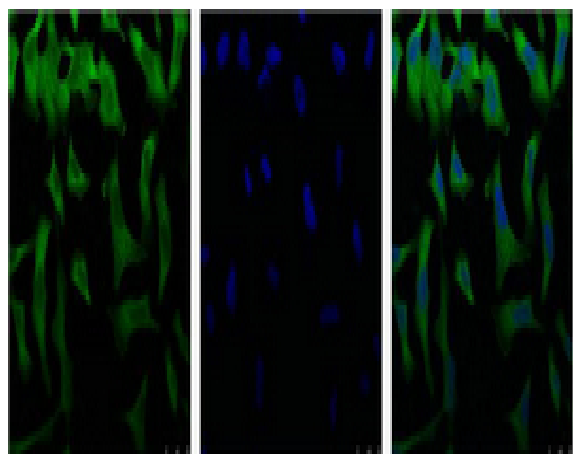
B

C

Immunofluorescence analysis of Mouse-spleen tissue. 1,eIF4A1 Monoclonal Antibody(M8)(red) was diluted at 1:200(4°C,overnight). 2, Cy3 labeled Secondary antibody was diluted at 1:300(room temperature, 50min).3, Picture B: DAPI(blue) 10min. Picture A:Target. Picture B: DAPI. Picture C: merge of A+B



Western blot analysis of 1) 293T, 2) HeLa, 3) HepG2, 4) Mouse Brain tissue,



IF analysis of HeLa with antibody (Left) and DAPI (Right) diluted at 1:100.