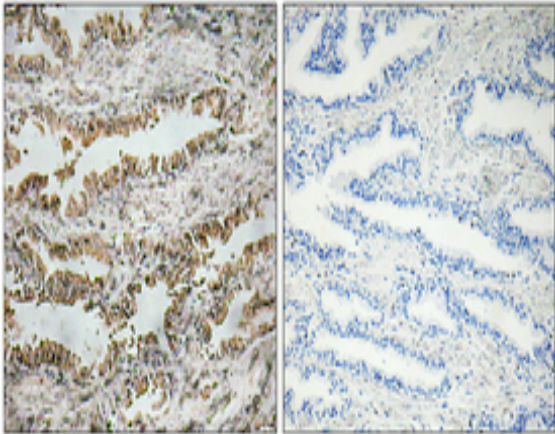


NT-4 Polyclonal Antibody

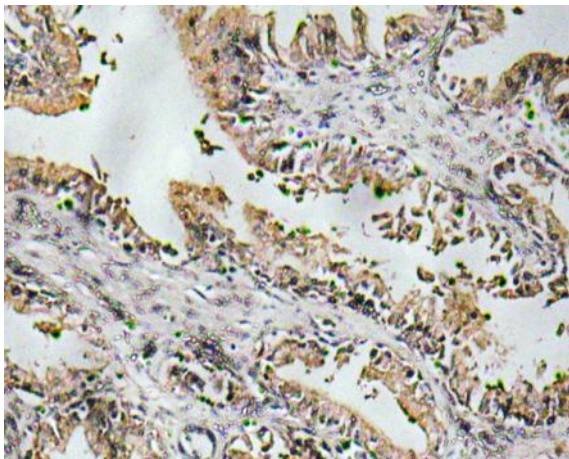
Catalog No :	YT3197
Reactivity :	Human;Mouse;Rat
Applications :	IHC;IF;ELISA
Target :	NT-4
Fields :	>>MAPK signaling pathway;>>Ras signaling pathway;>>PI3K-Akt signaling pathway;>>Neurotrophin signaling pathway
Gene Name :	NTF4
Protein Name :	Neurotrophin-4
Human Gene Id :	4909
Human Swiss Prot No :	P34130
Mouse Gene Id :	78405
Mouse Swiss Prot No :	Q80VU4
Rat Gene Id :	25730
Rat Swiss Prot No :	P34131
Immunogen :	The antiserum was produced against synthesized peptide derived from human NT-4. AA range:71-120
Specificity :	NT-4 Polyclonal Antibody detects endogenous levels of NT-4 protein.
Formulation :	Liquid in PBS containing 50% glycerol, 0.5% BSA and 0.02% sodium azide.
Source :	Polyclonal, Rabbit,IgG
Dilution :	IHC 1:100 - 1:300. ELISA: 1:10000.. IF 1:50-200

Purification :	The antibody was affinity-purified from rabbit antiserum by affinity-chromatography using epitope-specific immunogen.
Concentration :	1 mg/ml
Storage Stability :	-15°C to -25°C/1 year(Do not lower than -25°C)
Molecularweight :	22kD
Cell Pathway :	MAPK_ERK_Growth;MAPK_G_Protein;Neurotrophin;
Background :	This gene is a member of a family of neurotrophic factors, neurotrophins, that control survival and differentiation of mammalian neurons. The expression of this gene is ubiquitous and less influenced by environmental signals. While knock-outs of other neurotrophins including nerve growth factor, brain-derived neurotrophic factor, and neurotrophin 3 prove lethal during early postnatal development, NTF5-deficient mice only show minor cellular deficits and develop normally to adulthood. [provided by RefSeq, Jul 2008],
Function :	function:Target-derived survival factor for peripheral sensory sympathetic neurons.,similarity:Belongs to the NGF-beta family.,tissue specificity:Highest levels in prostate, lower levels in thymus, placenta, and skeletal muscle. Expressed in embryonic and adult tissues.,
Subcellular Location :	Secreted.
Expression :	Highest levels in prostate, lower levels in thymus, placenta, and skeletal muscle. Expressed in embryonic and adult tissues.
Sort :	10975
No4 :	1
Host :	Rabbit
Modifications :	Unmodified

Products Images



Immunohistochemical analysis of paraffin-embedded Human prostate cancer. Antibody was diluted at 1:100(4° overnight). High-pressure and temperature Tris-EDTA,pH8.0 was used for antigen retrieval. Negative contrl (right) obtained from antibody was pre-absorbed by immunogen peptide.



Immunohistochemistry analysis of NT-4 antibody in paraffin-embedded human prostate carcinoma tissue.