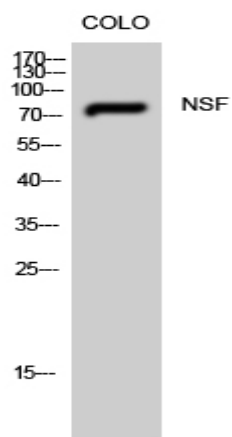


NSF Polyclonal Antibody

Catalog No :	YT3195
Reactivity :	Human;Mouse;Rat
Applications :	WB;ELISA
Target :	NSF
Fields :	>>Synaptic vesicle cycle;>>GABAergic synapse;>>Vasopressin-regulated water reabsorption
Gene Name :	NSF
Protein Name :	Vesicle-fusing ATPase
Human Gene Id :	4905
Human Swiss Prot No :	P46459
Mouse Gene Id :	18195
Mouse Swiss Prot No :	P46460
Rat Gene Id :	60355
Rat Swiss Prot No :	Q9QUL6
Immunogen :	Synthesized peptide derived from NSF . at AA range: 110-190
Specificity :	NSF Polyclonal Antibody detects endogenous levels of NSF protein.
Formulation :	Liquid in PBS containing 50% glycerol, 0.5% BSA and 0.02% sodium azide.
Source :	Polyclonal, Rabbit,IgG
Dilution :	WB 1:500 - 1:2000. ELISA: 1:40000. Not yet tested in other applications.

Purification :	The antibody was affinity-purified from rabbit antiserum by affinity-chromatography using epitope-specific immunogen.
Concentration :	1 mg/ml
Storage Stability :	-15°C to -25°C/1 year(Do not lower than -25°C)
Observed Band :	75kD
Background :	catalytic activity:ATP + H(2)O = ADP + phosphate.,cofactor:Binds 1 magnesium ion per subunit.,function:Required for vesicle-mediated transport. Catalyzes the fusion of transport vesicles within the Golgi cisternae. Is also required for transport from the endoplasmic reticulum to the Golgi stack. Seem to function as a fusion protein required for the delivery of cargo proteins to all compartments of the Golgi stack independent of vesicle origin.,similarity:Belongs to the AAA ATPase family.,subunit:Homohexamer. Interacts with GABARAP and GABARAPL2.,
Function :	catalytic activity:ATP + H(2)O = ADP + phosphate.,cofactor:Binds 1 magnesium ion per subunit.,function:Required for vesicle-mediated transport. Catalyzes the fusion of transport vesicles within the Golgi cisternae. Is also required for transport from the endoplasmic reticulum to the Golgi stack. Seem to function as a fusion protein required for the delivery of cargo proteins to all compartments of the Golgi stack independent of vesicle origin.,similarity:Belongs to the AAA ATPase family.,subunit:Homohexamer. Interacts with GABARAP and GABARAPL2.,
Subcellular Location :	Cytoplasm.
Expression :	Brain,Kidney,Lung,
Sort :	1112
No4 :	1
Host :	Rabbit
Modifications :	Unmodified

Products Images



Western Blot analysis of CoLo cells using NSF Polyclonal Antibody