

Nrf2 Polyclonal Antibody

Catalog No :	YT3189
Reactivity :	Human;Mouse;Rat
Applications :	WB;IHC;IF;ELISA
Target :	Nrf2
Fields :	>>Protein processing in endoplasmic reticulum;>>Parkinson disease;>>Pathways in cancer;>>Chemical carcinogenesis - reactive oxygen species;>>Hepatocellular carcinoma;>>Lipid and atherosclerosis;>>Fluid shear stress and atherosclerosis
Gene Name :	NFE2L2
Protein Name :	Nuclear factor erythroid 2-related factor 2
Human Gene Id :	4780
Human Swiss Prot No :	Q16236
Mouse Gene Id :	18024
Mouse Swiss Prot No :	Q60795
Rat Gene Id :	83619
Rat Swiss Prot No :	O54968
Immunogen :	The antiserum was produced against synthesized peptide derived from human Nrf2. AA range:556-605
Specificity :	Nrf2 Polyclonal Antibody detects endogenous levels of Nrf2 protein.
Formulation :	Liquid in PBS containing 50% glycerol, 0.5% BSA and 0.02% sodium azide.
Source :	Polyclonal, Rabbit,IgG

Dilution : WB 1:500 - 1:2000. IHC 1:100 - 1:300. IF 1:200 - 1:1000. ELISA: 1:40000. Not yet tested in other applications.

Purification : The antibody was affinity-purified from rabbit antiserum by affinity-chromatography using epitope-specific immunogen.

Concentration : 1 mg/ml

Storage Stability : -15°C to -25°C/1 year(Do not lower than -25°C)

Observed Band : 75-100kD

Background : This gene encodes a transcription factor which is a member of a small family of basic leucine zipper (bZIP) proteins. The encoded transcription factor regulates genes which contain antioxidant response elements (ARE) in their promoters; many of these genes encode proteins involved in response to injury and inflammation which includes the production of free radicals. Multiple transcript variants encoding different isoforms have been characterized for this gene. [provided by RefSeq, Sep 2015],

Function : domain:Acidic activation domain in the N-terminus, and DNA binding domain in the C-terminus.,function:Transcription activator that binds to antioxidant response (ARE) elements in the promoter regions of target genes. Important for the coordinated up-regulation of genes in response to oxidative stress. May be involved in the transcriptional activation of genes of the beta-globin cluster by mediating enhancer activity of hypersensitive site 2 of the beta-globin locus control region.,PTM:Phosphorylation of Ser-40 by PKC in response to oxidative stress dissociates NFE2L2 from its cytoplasmic inhibitor KEAP1, promoting its translocation into the nucleus.,similarity:Belongs to the bZIP family.,similarity:Belongs to the bZIP family. CNC subfamily.,similarity:Contains 1 bZIP domain.,subcellular location:Cytosolic under unstressed conditions, translocates into the nucleus upon induction by electr

Subcellular Location : Cytoplasm, cytosol . Nucleus . Cytosolic under unstressed conditions: ubiquitinated and degraded by the BCR(KEAP1) E3 ubiquitin ligase complex (PubMed:15601839, PubMed:21196497). Translocates into the nucleus upon induction by electrophilic agents that inactivate the BCR(KEAP1) E3 ubiquitin ligase complex (PubMed:21196497). .

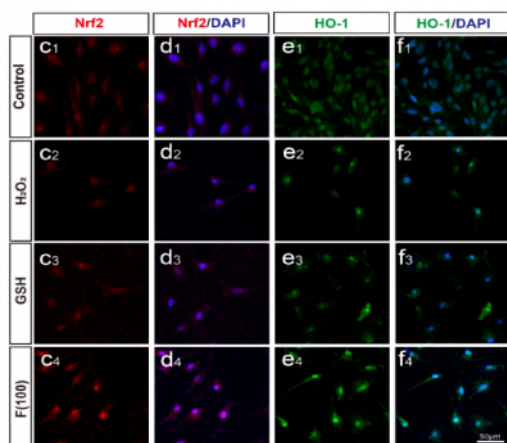
Expression : Widely expressed. Highest expression in adult muscle, kidney, lung, liver and in fetal muscle.

Tag : orthogonal,hot,knockdown

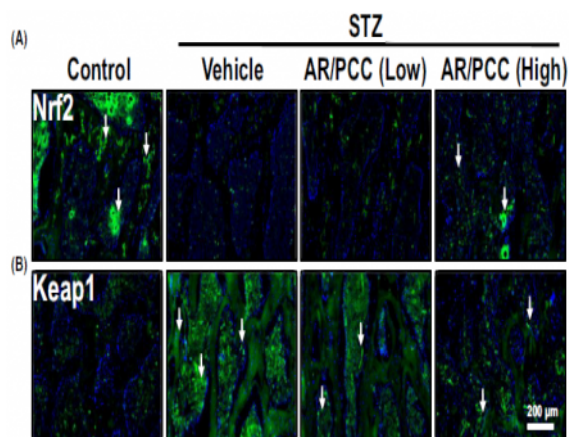
Sort : 1

No3 :	ab62352
No4 :	1
Host :	Rabbit
Modifications :	Unmodified

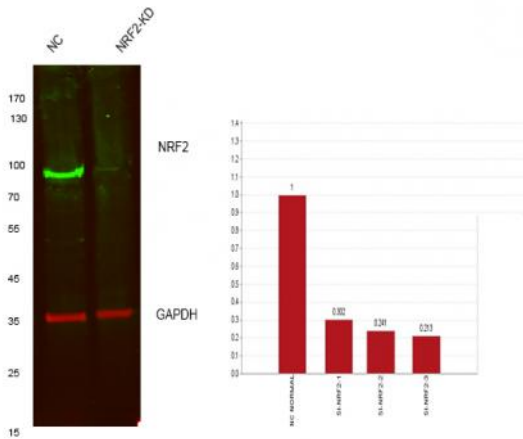
Products Images



Fullerol rescues the light-induced retinal damage by modulating Müller glia cell fate. Redox Biology Haiwei Xu WB Mouse, Human 1:1000 eyes MIO-M1 cell

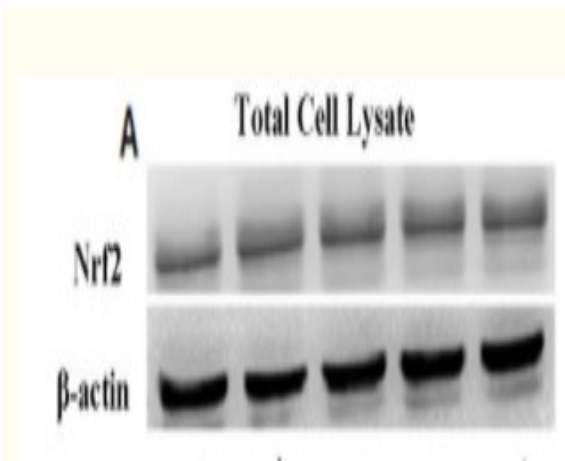


AR/PCC herb pair inhibits osteoblast pyroptosis to alleviate diabetes-related osteoporosis by activating Nrf2/Keap1 pathway. JOURNAL OF CELLULAR AND MOLECULAR MEDICINE Hongfeng Ruan IF Rat 1:500 vertebral body

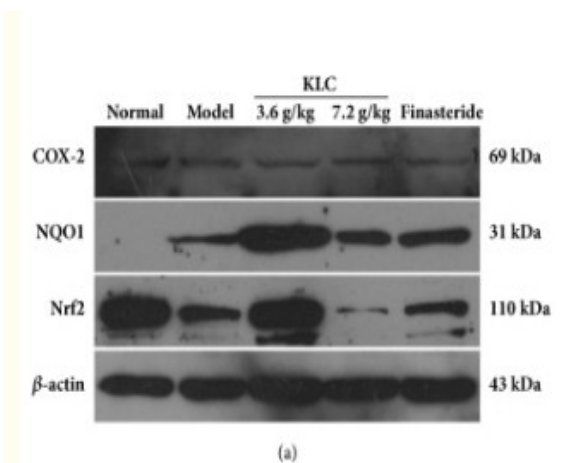


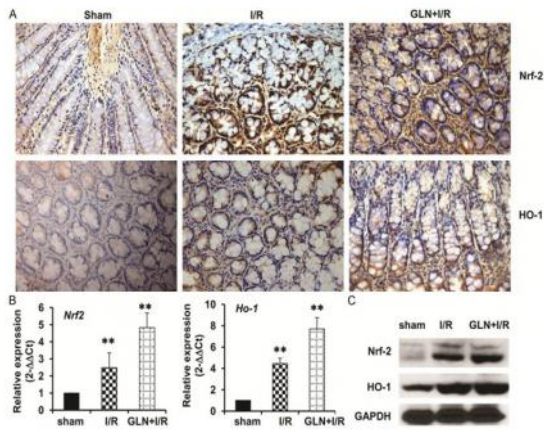
Western blot analysis of lysates from 1)Hela cell , 2)Hela cells knockdown by NRF2-siRNA (F:CAUUGAUGUUUCUGAUCUATT,R:UAGAUCAGAAACAUC AAUGTT), (Green) primary antibody was diluted at 1:1000, 4° over night, Dylight 800 secondary antibody(Immunoway:RS23920)was diluted at 1:10000, 37° 1 hour. (Red) GAPDH Monoclonal Antibody(5B7) (Immunoway:YM3029) antibody was diluted at 1:5000 as loading control, 4° over night, Dylight 680 secondary antibody(Immunoway:RS23710)was diluted at 1:10000, 37° 1 hour.

Li, Yixin, et al. "Glycogen synthase kinase 3β influences injury following cerebral ischemia/reperfusion in rats." *International journal of biological sciences* 12.5 (2016): 518.

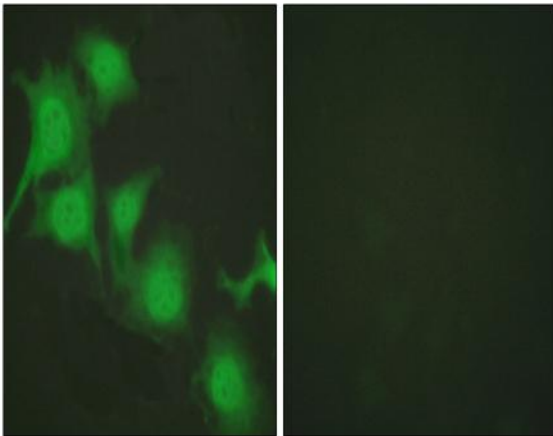


Zhang, Ling, et al. "Anti-Inflammatory and Antioxidant Effects of Kelong-Capsule on Testosterone-Induced Benign Prostatic Hyperplasia in Rats." *Evidence-Based Complementary and Alternative Medicine* 2018 (2018).

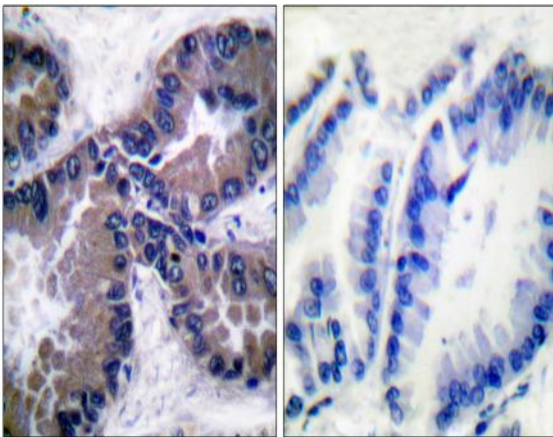




Wang, Ai-Li, et al. "Glutamine ameliorates intestinal ischemia-reperfusion Injury in rats by activating the Nrf2/Are signaling pathway." *International journal of clinical and experimental pathology* 8.7 (2015): 7896.



Immunofluorescence analysis of HUVEC cells, using Nrf2 Antibody. The picture on the right is blocked with the synthesized peptide.



Immunohistochemistry analysis of paraffin-embedded human lung carcinoma tissue, using Nrf2 Antibody. The picture on the right is blocked with the synthesized peptide.