

## NPY2-R Polyclonal Antibody

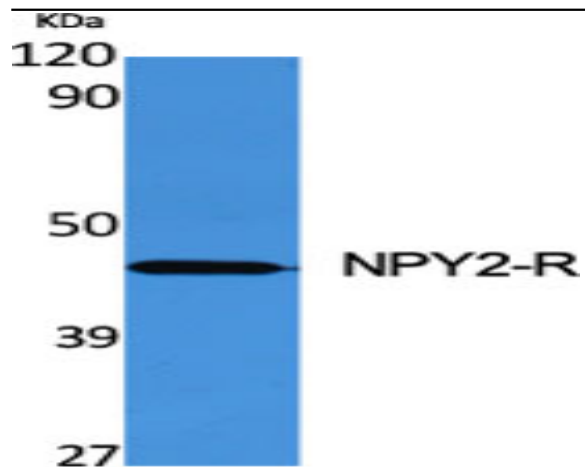
<b>Catalog No :</b>	YT3184
<b>Reactivity :</b>	Human;Mouse;Rat
<b>Applications :</b>	WB;IF;ELISA
<b>Target :</b>	NPY2-R
<b>Fields :</b>	>>Neuroactive ligand-receptor interaction
<b>Gene Name :</b>	NPY2R
<b>Protein Name :</b>	Neuropeptide Y receptor type 2
<b>Human Gene Id :</b>	4887
<b>Human Swiss Prot No :</b>	P49146
<b>Mouse Swiss Prot No :</b>	P97295
<b>Immunogen :</b>	The antiserum was produced against synthesized peptide derived from human NPY2R. AA range:1-50
<b>Specificity :</b>	NPY2-R Polyclonal Antibody detects endogenous levels of NPY2-R protein.
<b>Formulation :</b>	Liquid in PBS containing 50% glycerol, 0.5% BSA and 0.02% sodium azide.
<b>Source :</b>	Polyclonal, Rabbit,IgG
<b>Dilution :</b>	WB 1:500 - 1:2000. IF 1:200 - 1:1000. ELISA: 1:5000. Not yet tested in other applications.
<b>Purification :</b>	The antibody was affinity-purified from rabbit antiserum by affinity-chromatography using epitope-specific immunogen.
<b>Concentration :</b>	1 mg/ml
<b>Storage Stability :</b>	-15°C to -25°C/1 year(Do not lower than -25°C)

---

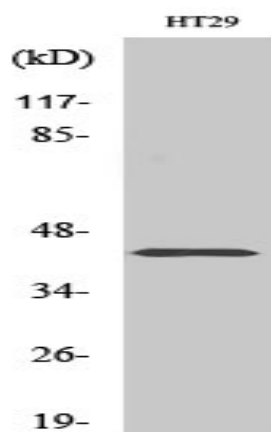
<b>Observed Band :</b>	43kD
<b>Cell Pathway :</b>	Neuroactive ligand-receptor interaction;
<b>Background :</b>	function:Receptor for neuropeptide Y and peptide YY. The rank order of affinity of this receptor for pancreatic polypeptides is PYY > NPY > PYY (3-36) > NPY (2-36) > [Ile-31, Gln-34] PP > [Leu-31, Pro-34] NPY > PP, [Pro-34] PYY and NPY free acid.,similarity:Belongs to the G-protein coupled receptor 1 family.,tissue specificity:High levels in amygdala, corpus callosum, hippocampus and subthalamic nucleus. Also detectable in caudate nucleus, hypothalamus and substantia nigra.,
<b>Function :</b>	function:Receptor for neuropeptide Y and peptide YY. The rank order of affinity of this receptor for pancreatic polypeptides is PYY > NPY > PYY (3-36) > NPY (2-36) > [Ile-31, Gln-34] PP > [Leu-31, Pro-34] NPY > PP, [Pro-34] PYY and NPY free acid.,similarity:Belongs to the G-protein coupled receptor 1 family.,tissue specificity:High levels in amygdala, corpus callosum, hippocampus and subthalamic nucleus. Also detectable in caudate nucleus, hypothalamus and substantia nigra.,
<b>Subcellular Location :</b>	Cell membrane; Multi-pass membrane protein.
<b>Expression :</b>	High levels in amygdala, corpus callosum, hippocampus and subthalamic nucleus. Also detectable in caudate nucleus, hypothalamus and substantia nigra.
<b>Tag :</b>	hot
<b>Sort :</b>	10959
<b>No4 :</b>	1
<b>Host :</b>	Rabbit
<b>Modifications :</b>	Unmodified

---

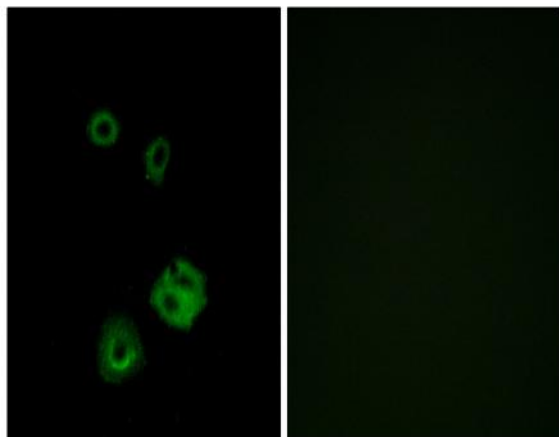
## Products Images



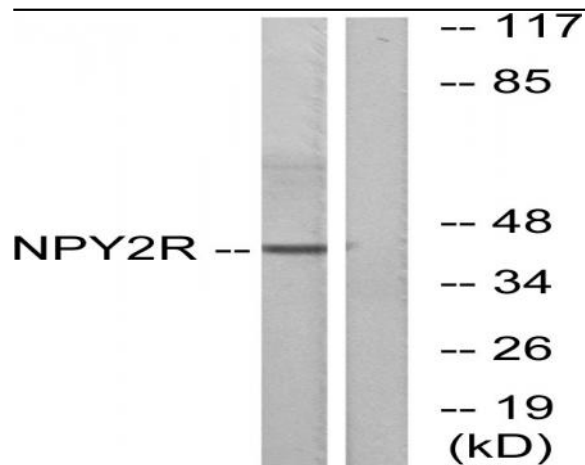
Western Blot analysis of various cells using NPY2-R Polyclonal Antibody diluted at 1:500



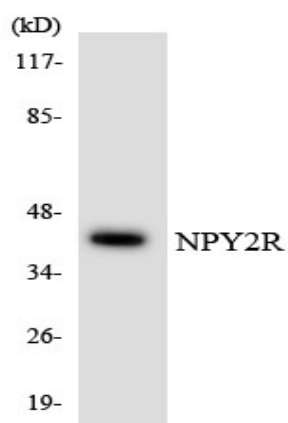
Western Blot analysis of HT29 cells using NPY2-R Polyclonal Antibody diluted at 1:500



Immunofluorescence analysis of A549 cells, using NPY2R Antibody. The picture on the right is blocked with the synthesized peptide.



Western blot analysis of lysates from HepG2 cells, using NPY2R Antibody. The lane on the right is blocked with the synthesized peptide.



Western blot analysis of the lysates from HUVEC cells using NPY2R antibody.