

NPY1-R Polyclonal Antibody

Catalog No :	YT3183
Reactivity :	Human;Mouse;Rat
Applications :	WB;IF;ELISA
Target :	NPY1-R
Fields :	>>cAMP signaling pathway;>>Neuroactive ligand-receptor interaction;>>Regulation of lipolysis in adipocytes
Gene Name :	NPY1R
Protein Name :	Neuropeptide Y receptor type 1
Human Gene Id :	4886
Human Swiss Prot No :	P25929
Mouse Gene Id :	18166
Mouse Swiss Prot No :	Q04573
Rat Swiss Prot No :	P21555
Immunogen :	The antiserum was produced against synthesized peptide derived from human NPY1R. AA range:221-270
Specificity :	NPY1-R Polyclonal Antibody detects endogenous levels of NPY1-R protein.
Formulation :	Liquid in PBS containing 50% glycerol, 0.5% BSA and 0.02% sodium azide.
Source :	Polyclonal, Rabbit,IgG
Dilution :	WB 1:500 - 1:2000. IF 1:200 - 1:1000. ELISA: 1:5000. Not yet tested in other applications.
Purification :	The antibody was affinity-purified from rabbit antiserum by affinity-

chromatography using epitope-specific immunogen.

Concentration : 1 mg/ml

Storage Stability : -15°C to -25°C/1 year(Do not lower than -25°C)

Observed Band : 48kD

Cell Pathway : Neuroactive ligand-receptor interaction;

Background : This gene belongs to the G-protein-coupled receptor superfamily. The encoded transmembrane protein mediates the function of neuropeptide Y (NPY), a neurotransmitter, and peptide YY (PYY), a gastrointestinal hormone. The encoded receptor undergoes fast agonist-induced internalization through clathrin-coated pits and is subsequently recycled back to the cell membrane. Activation of Y1 receptors may result in mobilization of intracellular calcium and inhibition of adenylate cyclase activity. [provided by RefSeq, Aug 2013],

Function : function:Receptor for neuropeptide Y and peptide YY. The rank order of affinity of this receptor for pancreatic polypeptides is NPY > [Pro-34] PYY, PYY and [Leu-31, Pro-34] NPY > NPY (2-36) > [Ile-31, Gln-34] PP and PYY (3-36) > PP > NPY free acid.,similarity:Belongs to the G-protein coupled receptor 1 family.,

Subcellular Location : Cell membrane; Multi-pass membrane protein.

Expression : Blood,Brain,Pancreas,Testis,

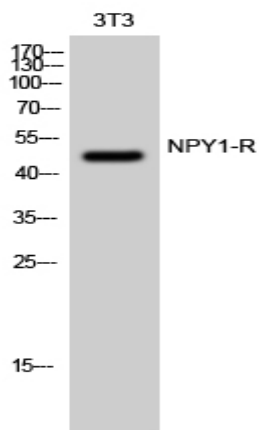
Sort : 10958

No4 : 1

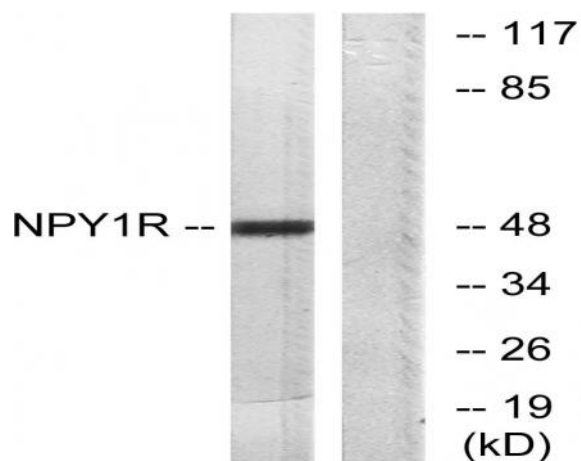
Host : Rabbit

Modifications : Unmodified

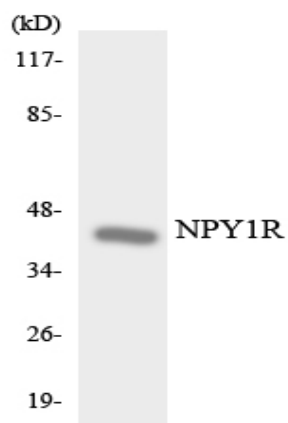
Products Images



Western Blot analysis of 3T3 cells using NPY1-R Polyclonal Antibody



Western blot analysis of lysates from NIH/3T3 cells, using NPY1R Antibody. The lane on the right is blocked with the synthesized peptide.



Western blot analysis of the lysates from 293 cells using NPY1R antibody.