

Olfactory receptor 5D3 Polyclonal Antibody

| | |
|------------------------------|---|
| Catalog No : | YT3402 |
| Reactivity : | Human;Rat;Mouse; |
| Applications : | WB;IF;ELISA |
| Target : | Olfactory receptor 5D3 |
| Gene Name : | OR5D3 |
| Protein Name : | Olfactory receptor 5D3 |
| Human Gene Id : | 8594 |
| Human Swiss Prot No : | O95220/Q6IFD1/Q6KH09 |
| Immunogen : | The antiserum was produced against synthesized peptide derived from human OR5D3. AA range:148-197 |
| Specificity : | Olfactory receptor 5D3 Polyclonal Antibody detects endogenous levels of Olfactory receptor 5D3 protein. |
| Formulation : | Liquid in PBS containing 50% glycerol, 0.5% BSA and 0.02% sodium azide. |
| Source : | Polyclonal, Rabbit,IgG |
| Dilution : | WB 1:500 - 1:2000. IF 1:200 - 1:1000. ELISA: 1:10000. Not yet tested in other applications. |
| Purification : | The antibody was affinity-purified from rabbit antiserum by affinity-chromatography using epitope-specific immunogen. |
| Concentration : | 1 mg/ml |
| Storage Stability : | -15°C to -25°C/1 year(Do not lower than -25°C) |
| Observed Band : | 27kD |

Background : Olfactory receptors interact with odorant molecules in the nose, to initiate a neuronal response that triggers the perception of a smell. The olfactory receptor proteins are members of a large family of G-protein-coupled receptors (GPCR) arising from single coding-exon genes. Olfactory receptors share a 7-transmembrane domain structure with many neurotransmitter and hormone receptors and are responsible for the recognition and G protein-mediated transduction of odorant signals. The olfactory receptor gene family is the largest in the genome. The nomenclature assigned to the olfactory receptor genes and proteins for this organism is independent of other organisms.

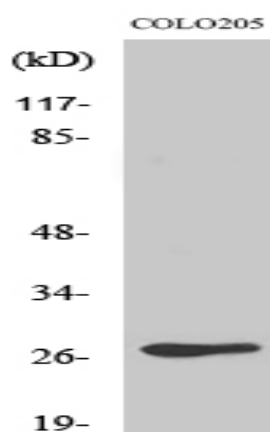
Sort : 11231

No4 : 1

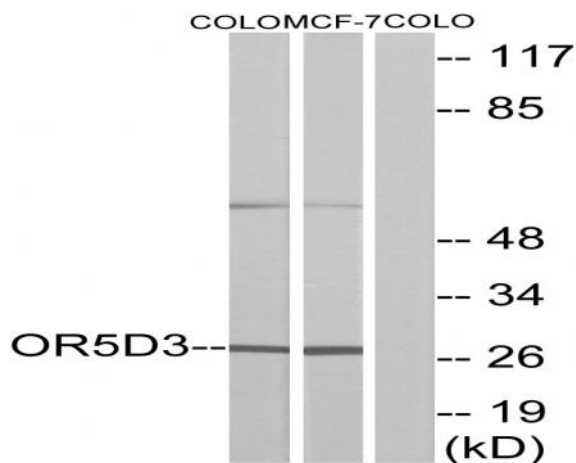
Host : Rabbit

Modifications : Unmodified

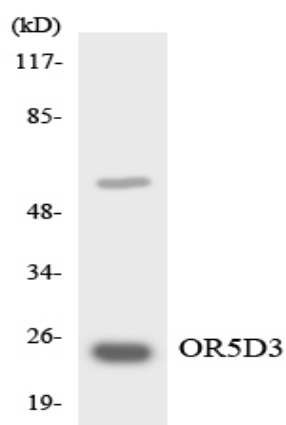
Products Images



Western Blot analysis of various cells using Olfactory receptor 5D3 Polyclonal Antibody diluted at 1:500



Western blot analysis of lysates from COLO205 cells and MCF-7 cells, using OR5D3 Antibody. The lane on the right is blocked with the synthesized peptide.



Western blot analysis of the lysates from HT-29 cells using OR5D3 antibody.