

## NPA1 Polyclonal Antibody

<b>Catalog No :</b>	YT3178
<b>Reactivity :</b>	Human;Mouse
<b>Applications :</b>	IHC;IF;ELISA
<b>Target :</b>	NPA1
<b>Gene Name :</b>	URB1
<b>Protein Name :</b>	Nucleolar pre-ribosomal-associated protein 1
<b>Human Gene Id :</b>	9875
<b>Human Swiss Prot No :</b>	O60287
<b>Mouse Swiss Prot No :</b>	Q571H0
<b>Immunogen :</b>	The antiserum was produced against synthesized peptide derived from human URB1. AA range:2013-2062
<b>Specificity :</b>	NPA1 Polyclonal Antibody detects endogenous levels of NPA1 protein.
<b>Formulation :</b>	Liquid in PBS containing 50% glycerol, 0.5% BSA and 0.02% sodium azide.
<b>Source :</b>	Polyclonal, Rabbit,IgG
<b>Dilution :</b>	IHC 1:100 - 1:300. ELISA: 1:40000.. IF 1:50-200
<b>Purification :</b>	The antibody was affinity-purified from rabbit antiserum by affinity-chromatography using epitope-specific immunogen.
<b>Concentration :</b>	1 mg/ml
<b>Storage Stability :</b>	-15°C to -25°C/1 year(Do not lower than -25°C)
<b>Molecularweight :</b>	254kD

**Background :** URB1, also named as C21orf108, KIAA0539 and NPA1, is a 2271 amino acid protein that is homologous to the *S. cerevisiae* protein URB1 which is a nucleolar protein involved in the normal accumulation of 25S and 5. S rRNAs and may also play a role in the biosynthesis of the 60S ribosomal unit. Also localized to the nucleolus, human URB1 is thought to have the same functions as *S. cerevisiae* URB1. The antibody is specific to URB1.

**Subcellular Location :** Nucleus, nucleolus .

**Expression :** Brain, Epithelium, Placenta, T-cell,

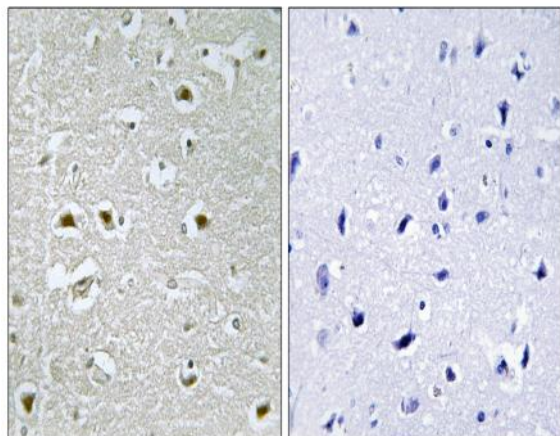
**Sort :** 10939

**No4 :** 1

**Host :** Rabbit

**Modifications :** Unmodified

## Products Images



Immunohistochemistry analysis of paraffin-embedded human brain, using URB1 Antibody. The picture on the right is blocked with the synthesized peptide.