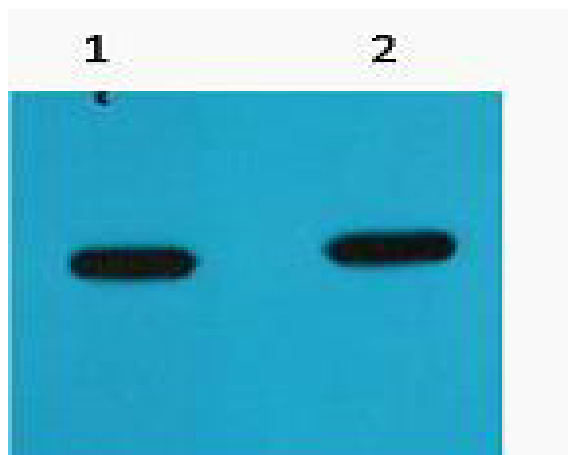


mCherry-Tag Monoclonal Antibody(Mix)

Catalog No :	YM3125
Reactivity :	Species independent
Applications :	WB
Target :	mCherry-Tag
Immunogen :	Recombinant Protein of mCherry-Tag
Specificity :	The antibody detects mCherry and mCherry tag fusion proteins.
Formulation :	PBS, pH 7.4, containing 0.5%BSA, 0.02% sodium azide as Preservative and 50% Glycerol.
Source :	Monoclonal, Mouse
Dilution :	WB 1:5000
Purification :	The antibody was affinity-purified from mouse ascites by affinity-chromatography using specific immunogen.
Storage Stability :	-15°C to -25°C/1 year(Do not lower than -25°C)
Background :	mCherry is derived from proteins originally isolated from Cnidarians (jelly fish, sea anemones and corals), and is used as a fluorescent tracer in trasfection and transgenic experiments. The prototype for these fluorescent proteins is Green Fluorescent Protein (GFP), which is a ~27kDa protein isolated originally from the jellyfish <i>Aequoria victoria</i> . The mCherry protein is derived from DsRed, a red fluorescent protein related to GFP isolated from so-called disc corals of the genus <i>Discosoma</i> .
Sort :	1286
No1 :	ab167453
No3 :	ab125096
	1

Host: Mouse**Modifications :** Unmodified

Products Images



Western blot analysis of mCherry recombinant protein, diluted at
1) 1:5000 2) 1:10000