

## NK-3R Polyclonal Antibody

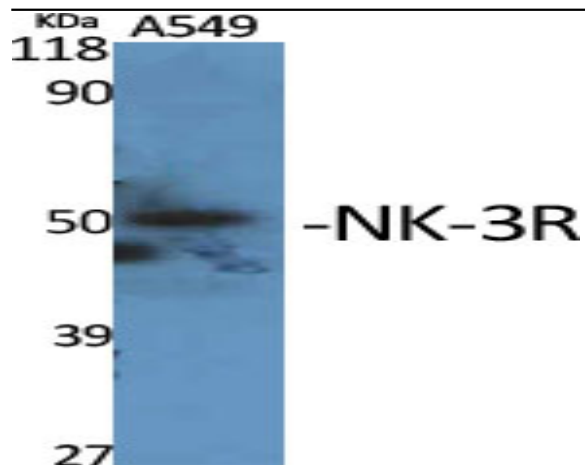
<b>Catalog No :</b>	YT3133
<b>Reactivity :</b>	Human;Mouse;Rat
<b>Applications :</b>	WB;IF;ELISA
<b>Target :</b>	NK-3R
<b>Fields :</b>	>>Calcium signaling pathway;>>Neuroactive ligand-receptor interaction
<b>Gene Name :</b>	TACR3
<b>Protein Name :</b>	Neuromedin-K receptor
<b>Human Gene Id :</b>	6870
<b>Human Swiss Prot No :</b>	P29371
<b>Mouse Gene Id :</b>	21338
<b>Mouse Swiss Prot No :</b>	P47937
<b>Rat Gene Id :</b>	24808
<b>Rat Swiss Prot No :</b>	P16177
<b>Immunogen :</b>	The antiserum was produced against synthesized peptide derived from human NK3R. AA range:401-450
<b>Specificity :</b>	NK-3R Polyclonal Antibody detects endogenous levels of NK-3R protein.
<b>Formulation :</b>	Liquid in PBS containing 50% glycerol, 0.5% BSA and 0.02% sodium azide.
<b>Source :</b>	Polyclonal, Rabbit,IgG
<b>Dilution :</b>	WB 1:500 - 1:2000. IF 1:200 - 1:1000. ELISA: 1:10000. Not yet tested in other applications.

---

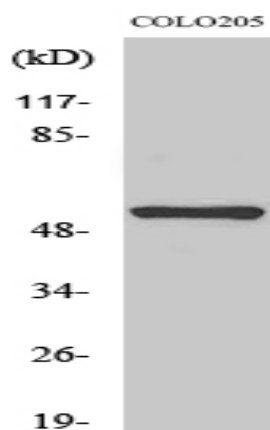
<b>Purification :</b>	The antibody was affinity-purified from rabbit antiserum by affinity-chromatography using epitope-specific immunogen.
<b>Concentration :</b>	1 mg/ml
<b>Storage Stability :</b>	-15°C to -25°C/1 year(Do not lower than -25°C)
<b>Observed Band :</b>	52kD
<b>Cell Pathway :</b>	Calcium;Neuroactive ligand-receptor interaction;
<b>Background :</b>	This gene belongs to a family of genes that function as receptors for tachykinins. Receptor affinities are specified by variations in the 5' end of the sequence. The receptors belonging to this family are characterized by interactions with G proteins and 7 hydrophobic transmembrane regions. This gene encodes the receptor for the tachykinin neurokinin 3, also referred to as neurokinin B. [provided by RefSeq, Jul 2008],
<b>Function :</b>	function:This is a receptor for the tachykinin neuropeptide neuromedin-K (neurokinin B). It is associated with G proteins that activate a phosphatidylinositol-calcium second messenger system.,miscellaneous:The rank order of affinity of this receptor to tachykinins is: neuromedin-K > substance K > substance P.,PTM:The anchoring of this receptor to the plasma membrane is probably mediated by the palmitoylation of a cysteine residue.,similarity:Belongs to the G-protein coupled receptor 1 family.,
<b>Subcellular Location :</b>	Cell membrane; Multi-pass membrane protein.
<b>Expression :</b>	Brain,G-protein coupled receptors,PCR rescued clones,Placenta,
<b>Sort :</b>	10861
<b>No4 :</b>	1
<b>Host :</b>	Rabbit
<b>Modifications :</b>	Unmodified

---

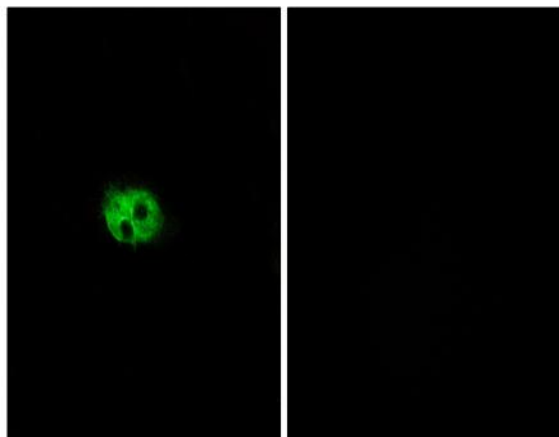
## Products Images



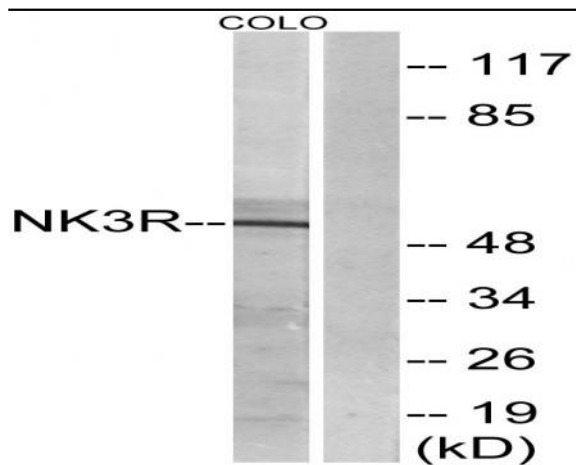
Western Blot analysis of various cells using NK-3R Polyclonal Antibody cells nucleus extracted by Minute TM Cytoplasmic and Nuclear Fractionation kit (SC-003, Inventbiotech, MN, USA).



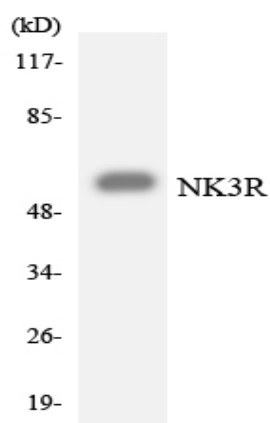
Western Blot analysis of COLO205 cells using NK-3R Polyclonal Antibody cells nucleus extracted by Minute TM Cytoplasmic and Nuclear Fractionation kit (SC-003, Inventbiotech, MN, USA).



Immunofluorescence analysis of A549 cells, using NK3R Antibody. The picture on the right is blocked with the synthesized peptide.



Western blot analysis of lysates from COLO205 cells, using NK3R Antibody. The lane on the right is blocked with the synthesized peptide.



Western blot analysis of the lysates from HepG2 cells using NK3R antibody.