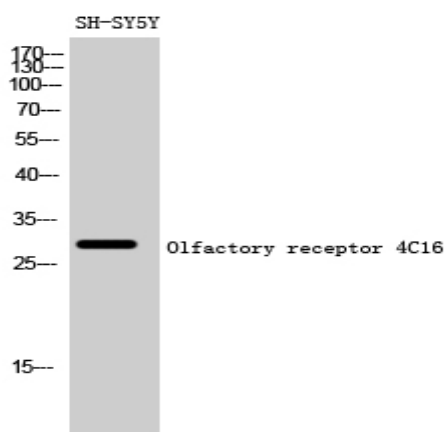


Olfactory receptor 4C16 Polyclonal Antibody

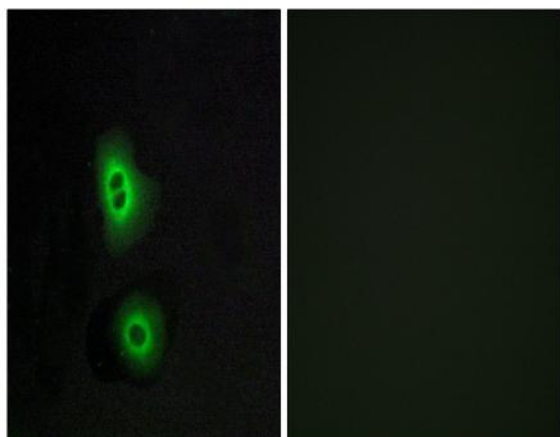
Catalog No :	YT3337
Reactivity :	Human
Applications :	WB;IF;ELISA
Target :	Olfactory receptor 4C16
Fields :	>>Olfactory transduction
Gene Name :	OR4C16
Protein Name :	Olfactory receptor 4C16
Human Gene Id :	219428
Human Swiss Prot No :	Q8NGL9
Immunogen :	The antiserum was produced against synthesized peptide derived from human OR4C16. AA range:261-310
Specificity :	Olfactory receptor 4C16 Polyclonal Antibody detects endogenous levels of Olfactory receptor 4C16 protein.
Formulation :	Liquid in PBS containing 50% glycerol, 0.5% BSA and 0.02% sodium azide.
Source :	Polyclonal, Rabbit,IgG
Dilution :	WB 1:500 - 1:2000. IF 1:200 - 1:1000. ELISA: 1:20000. Not yet tested in other applications.
Purification :	The antibody was affinity-purified from rabbit antiserum by affinity-chromatography using epitope-specific immunogen.
Concentration :	1 mg/ml
Storage Stability :	-15°C to -25°C/1 year(Do not lower than -25°C)

Observed Band :	35kD
Cell Pathway :	Olfactory transduction;
Background :	<p>Olfactory receptors interact with odorant molecules in the nose, to initiate a neuronal response that triggers the perception of a smell. The olfactory receptor proteins are members of a large family of G-protein-coupled receptors (GPCR) arising from single coding-exon genes. Olfactory receptors share a 7-transmembrane domain structure with many neurotransmitter and hormone receptors and are responsible for the recognition and G protein-mediated transduction of odorant signals. The olfactory receptor gene family is the largest in the genome. The nomenclature assigned to the olfactory receptor genes and proteins for this organism is independent of other organisms. This olfactory receptor gene is a segregating pseudogene, where some individuals have an allele that encodes a functional olfactory receptor, while other individuals have an allele encoding a</p>
Function :	function:Odorant receptor .,similarity:Belongs to the G-protein coupled receptor 1 family.,
Subcellular Location :	Cell membrane; Multi-pass membrane protein.
Sort :	11166
No4 :	1
Host :	Rabbit
Modifications :	Unmodified

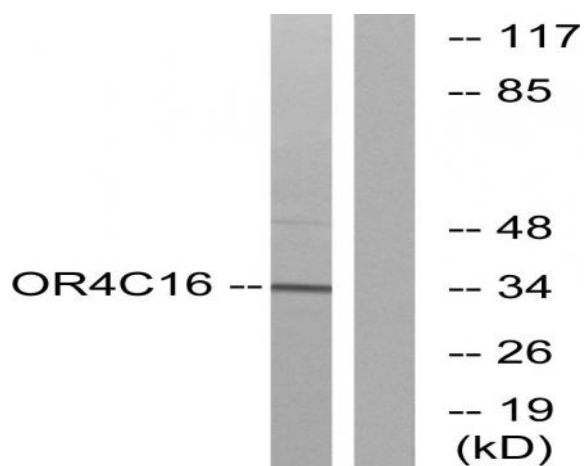
Products Images



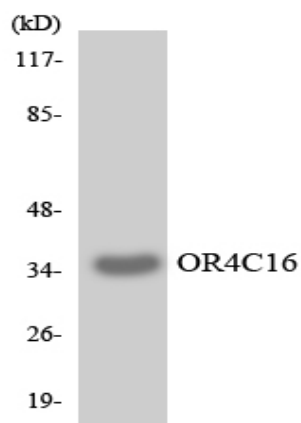
Western Blot analysis of SH-SY5Y cells using Olfactory receptor 4C16 Polyclonal Antibody diluted at 1:500



Immunofluorescence analysis of A549 cells, using OR4C16 Antibody. The picture on the right is blocked with the synthesized peptide.



Western blot analysis of lysates from LOVO cells, using OR4C16 Antibody. The lane on the right is blocked with the synthesized peptide.



Western blot analysis of the lysates from K562 cells using OR4C16 antibody.