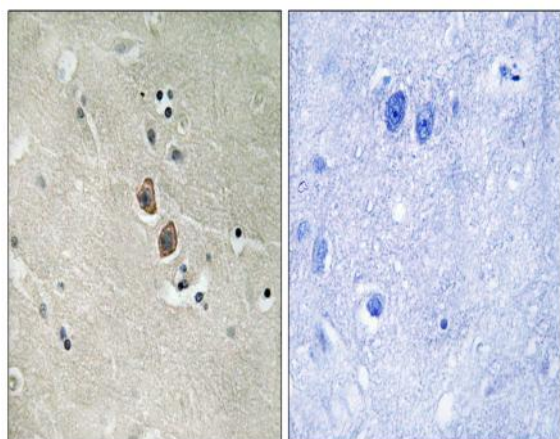


Neuroplastin Polyclonal Antibody

Catalog No :	YT3075
Reactivity :	Human;Mouse;Rat
Applications :	IHC;IF;ELISA
Target :	Neuroplastin
Gene Name :	NPTN
Protein Name :	Neuroplastin
Human Gene Id :	27020
Human Swiss Prot No :	Q9Y639
Mouse Gene Id :	20320
Mouse Swiss Prot No :	P97300
Rat Gene Id :	56064
Rat Swiss Prot No :	P97546
Immunogen :	The antiserum was produced against synthesized peptide derived from human NPTN. AA range:106-155
Specificity :	Neuroplastin Polyclonal Antibody detects endogenous levels of Neuroplastin protein.
Formulation :	Liquid in PBS containing 50% glycerol, 0.5% BSA and 0.02% sodium azide.
Source :	Polyclonal, Rabbit,IgG
Dilution :	IHC 1:100 - 1:300. ELISA: 1:5000.. IF 1:50-200
Purification :	The antibody was affinity-purified from rabbit antiserum by affinity-chromatography using epitope-specific immunogen.

Concentration :	1 mg/ml
Storage Stability :	-15°C to -25°C/1 year(Do not lower than -25°C)
Molecularweight :	31kD
Background :	This gene encodes a type I transmembrane protein belonging to the Ig superfamily. The protein is believed to be involved in cell-cell interactions or cell-substrate interactions. Alternative splicing results in multiple transcript variants. [provided by RefSeq, May 2009],
Function :	PTM:N-glycosylated.,similarity:Contains 1 Ig-like C2-type (immunoglobulin-like) domain.,similarity:Contains 1 Ig-like V-type (immunoglobulin-like) domain.,tissue specificity:Isoform 1 is ubiquitous.,
Subcellular Location :	Cell membrane ; Single-pass type I membrane protein .; [Isoform 2]: Cell junction, synapse, postsynaptic density .
Expression :	Isoform 1 is ubiquitously expressed. Isoform 2 is expressed in brain cortex and cerebellum (at protein level).
Sort :	10736
No4 :	1
Host :	Rabbit
Modifications :	Unmodified

Products Images



Immunohistochemistry analysis of paraffin-embedded human brain tissue, using NPTN Antibody. The picture on the right is blocked with the synthesized peptide.