

Olfactory receptor 2W3 Polyclonal Antibody

Catalog No :	YT3325
Reactivity :	Human;Rat;Mouse;
Applications :	WB;ELISA
Target :	Olfactory receptor 2W3
Fields :	>>Olfactory transduction
Gene Name :	OR2W3
Protein Name :	Olfactory receptor 2W3
Human Gene Id :	343171
Human Swiss Prot No :	Q7Z3T1
Immunogen :	The antiserum was produced against synthesized peptide derived from human OR2W3. AA range:141-190
Specificity :	Olfactory receptor 2W3 Polyclonal Antibody detects endogenous levels of Olfactory receptor 2W3 protein.
Formulation :	Liquid in PBS containing 50% glycerol, 0.5% BSA and 0.02% sodium azide.
Source :	Polyclonal, Rabbit,IgG
Dilution :	WB 1:500 - 1:2000. ELISA: 1:10000. Not yet tested in other applications.
Purification :	The antibody was affinity-purified from rabbit antiserum by affinity-chromatography using epitope-specific immunogen.
Concentration :	1 mg/ml
Storage Stability :	-15°C to -25°C/1 year(Do not lower than -25°C)
Observed Band :	35kD

Cell Pathway : Olfactory transduction;

Background : olfactory receptor family 2 subfamily W member 3(OR2W3) Homo sapiens Olfactory receptors interact with odorant molecules in the nose, to initiate a neuronal response that triggers the perception of a smell. The olfactory receptor proteins are members of a large family of G-protein-coupled receptors (GPCR) arising from single coding-exon genes. Olfactory receptors share a 7-transmembrane domain structure with many neurotransmitter and hormone receptors and are responsible for the recognition and G protein-mediated transduction of odorant signals. The olfactory receptor gene family is the largest in the genome. The nomenclature assigned to the olfactory receptor genes and proteins for this organism is independent of other organisms. [provided by RefSeq, Jul 2008],

Function : function:Odorant receptor .,similarity:Belongs to the G-protein coupled receptor 1 family.,

Subcellular Location : Cell membrane; Multi-pass membrane protein.

Expression : Fetal brain,

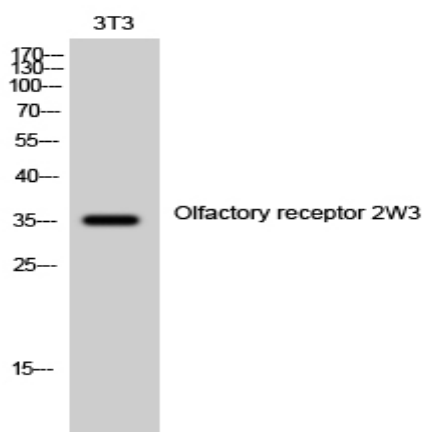
Sort : 11154

No4 : 1

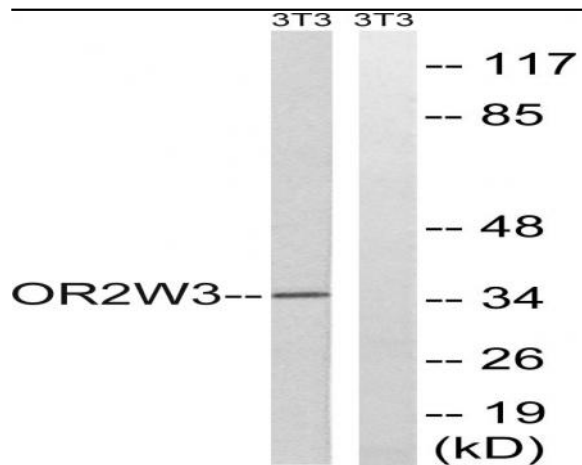
Host : Rabbit

Modifications : Unmodified

Products Images



Western Blot analysis of 3T3 cells using Olfactory receptor 2W3 Polyclonal Antibody



Western blot analysis of lysates from NIH/3T3 cells, using OR2W3 Antibody. The lane on the right is blocked with the synthesized peptide.