

Neurocan Polyclonal Antibody

Catalog No :	YT3064
Reactivity :	Human;Rat;Mouse;
Applications :	WB;IHC
Target :	Neurocan
Gene Name :	NCAN
Protein Name :	Neurocan core protein
Human Gene Id :	1463
Human Swiss Prot No :	O14594
Mouse Swiss Prot No :	P55066
Immunogen :	Synthesized peptide derived from Neurocan . at AA range: 370-450
Specificity :	Neurocan Polyclonal Antibody detects endogenous levels of Neurocan protein.
Formulation :	Liquid in PBS containing 50% glycerol, 0.5% BSA and 0.02% sodium azide.
Source :	Polyclonal, Rabbit,IgG
Dilution :	WB 1:500-2000;IHC 1:50-300
Purification :	The antibody was affinity-purified from rabbit antiserum by affinity-chromatography using epitope-specific immunogen.
Concentration :	1 mg/ml
Storage Stability :	-15°C to -25°C/1 year(Do not lower than -25°C)
Observed Band :	145kD

Background : Neurocan is a chondroitin sulfate proteoglycan thought to be involved in the modulation of cell adhesion and migration.[supplied by OMIM, Jul 2002],

Function : function:May modulate neuronal adhesion and neurite growth during development by binding to neural cell adhesion molecules (NG-CAM and N-CAM). Chondroitin sulfate proteoglycan; binds to hyaluronic acid.,online information:Neurocan,similarity:Belongs to the aggrecan/versican proteoglycan family.,similarity:Contains 1 C-type lectin domain.,similarity:Contains 1 Ig-like V-type (immunoglobulin-like) domain.,similarity:Contains 1 Sushi (CCP/SCR) domain.,similarity:Contains 2 EGF-like domains.,similarity:Contains 2 Link domains.,tissue specificity:Brain.,

Subcellular Location : Secreted .

Expression : Brain.

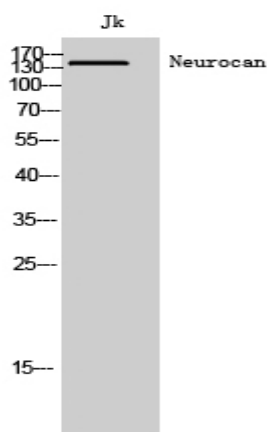
Sort : 10714

No4 : 1

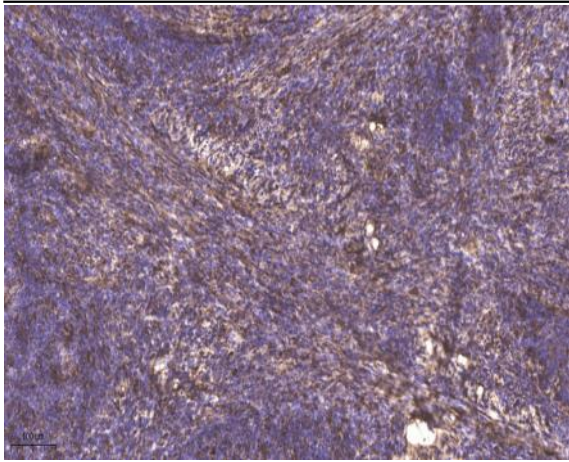
Host : Rabbit

Modifications : Unmodified

Products Images



Western Blot analysis of Jk cells using Neurocan Polyclonal Antibody



Immunohistochemical analysis of paraffin-embedded human cervical carcinoma. 1, Antibody was diluted at 1:200(4° overnight). 2, Tris-EDTA,pH9.0 was used for antigen retrieval. 3,Secondary antibody was diluted at 1:200(room temperature, 45min).