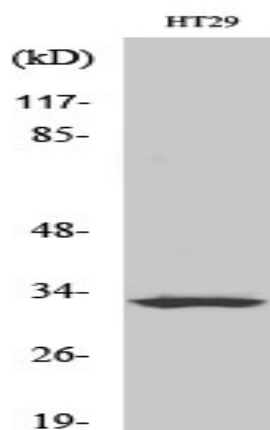


Olfactory receptor 2T1 Polyclonal Antibody

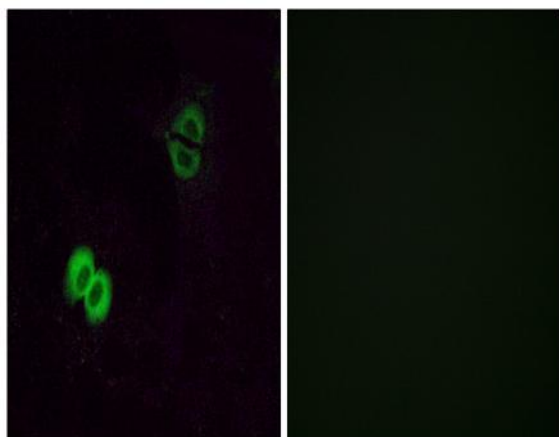
Catalog No :	YT3317
Reactivity :	Human;Rat;Mouse;
Applications :	WB;IF;ELISA
Target :	Olfactory receptor 2T1
Fields :	>>Olfactory transduction
Gene Name :	OR2T1
Protein Name :	Olfactory receptor 2T1
Human Gene Id :	26696
Human Swiss Prot No :	O43869
Immunogen :	The antiserum was produced against synthesized peptide derived from human OR2T1. AA range:231-280
Specificity :	Olfactory receptor 2T1 Polyclonal Antibody detects endogenous levels of Olfactory receptor 2T1 protein.
Formulation :	Liquid in PBS containing 50% glycerol, 0.5% BSA and 0.02% sodium azide.
Source :	Polyclonal, Rabbit,IgG
Dilution :	WB 1:500 - 1:2000. IF 1:200 - 1:1000. ELISA: 1:10000. Not yet tested in other applications.
Purification :	The antibody was affinity-purified from rabbit antiserum by affinity-chromatography using epitope-specific immunogen.
Concentration :	1 mg/ml
Storage Stability :	-15°C to -25°C/1 year(Do not lower than -25°C)

Observed Band :	33kD
Cell Pathway :	Olfactory transduction;
Background :	olfactory receptor family 2 subfamily T member 1(OR2T1) Homo sapiens Olfactory receptors interact with odorant molecules in the nose, to initiate a neuronal response that triggers the perception of a smell. The olfactory receptor proteins are members of a large family of G-protein-coupled receptors (GPCR) arising from single coding-exon genes. Olfactory receptors share a 7-transmembrane domain structure with many neurotransmitter and hormone receptors and are responsible for the recognition and G protein-mediated transduction of odorant signals. The olfactory receptor gene family is the largest in the genome. The nomenclature assigned to the olfactory receptor genes and proteins for this organism is independent of other organisms. [provided by RefSeq, Jul 2008],
Function :	caution:It is uncertain whether Met-1 or Met-52 is the initiator.,function:Odorant receptor .,similarity:Belongs to the G-protein coupled receptor 1 family.,
Subcellular Location :	Cell membrane; Multi-pass membrane protein.
Sort :	11147
No4 :	1
Host :	Rabbit
Modifications :	Unmodified

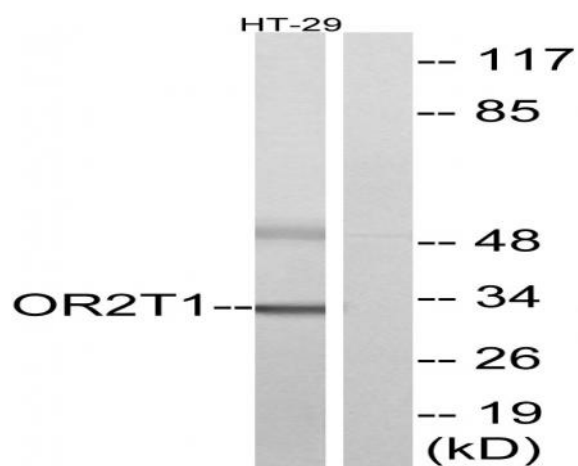
Products Images



Western Blot analysis of various cells using Olfactory receptor 2T1 Polyclonal Antibody



Immunofluorescence analysis of A549 cells, using OR2T1 Antibody. The picture on the right is blocked with the synthesized peptide.



Western blot analysis of lysates from HT-29 cells, using OR2T1 Antibody. The lane on the right is blocked with the synthesized peptide.