

## Neurexophilin-4 Polyclonal Antibody

<b>Catalog No :</b>	YT3060
<b>Reactivity :</b>	Human;Rat
<b>Applications :</b>	WB;IHC;IF;ELISA
<b>Target :</b>	Neurexophilin-4
<b>Gene Name :</b>	NXPH4
<b>Protein Name :</b>	Neurexophilin-4
<b>Human Gene Id :</b>	11247
<b>Human Swiss Prot No :</b>	O95158
<b>Rat Gene Id :</b>	59316
<b>Rat Swiss Prot No :</b>	Q9Z2N4
<b>Immunogen :</b>	The antiserum was produced against synthesized peptide derived from human NXPH4. AA range:216-265
<b>Specificity :</b>	Neurexophilin-4 Polyclonal Antibody detects endogenous levels of Neurexophilin-4 protein.
<b>Formulation :</b>	Liquid in PBS containing 50% glycerol, 0.5% BSA and 0.02% sodium azide.
<b>Source :</b>	Polyclonal, Rabbit,IgG
<b>Dilution :</b>	WB 1:500 - 1:2000. IHC 1:100 - 1:300. ELISA: 1:40000.. IF 1:50-200
<b>Purification :</b>	The antibody was affinity-purified from rabbit antiserum by affinity-chromatography using epitope-specific immunogen.
<b>Concentration :</b>	1 mg/ml
<b>Storage Stability :</b>	-15°C to -25°C/1 year(Do not lower than -25°C)

**Observed Band :** 33kD

**Background :** function:May be signaling molecules that resemble neuropeptides and that act by binding to alpha-neurexins and possibly other receptors .,PTM:May be proteolytically processed at the boundary between the N-terminal non-conserved and the central conserved domain in neuron-like cells.,similarity:Belongs to the neurexophilin family.,tissue specificity:Expressed in brain, spleen, and testis.,

**Function :** function:May be signaling molecules that resemble neuropeptides and that act by binding to alpha-neurexins and possibly other receptors .,PTM:May be proteolytically processed at the boundary between the N-terminal non-conserved and the central conserved domain in neuron-like cells.,similarity:Belongs to the neurexophilin family.,tissue specificity:Expressed in brain, spleen, and testis.,

**Subcellular Location :** Secreted .

**Expression :** Expressed in brain, spleen, and testis.

**Tag :** hot

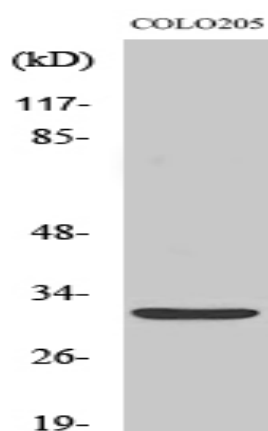
**Sort :** 10709

**No4 :** 1

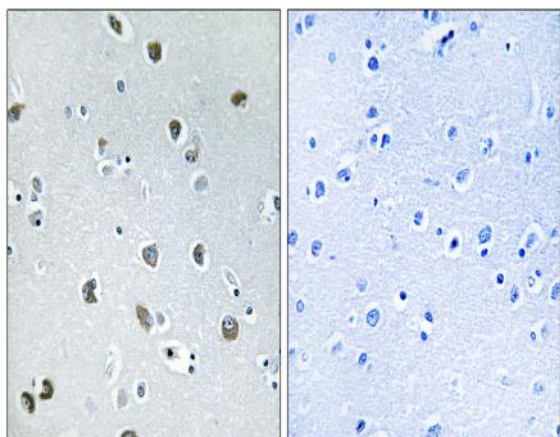
**Host :** Rabbit

**Modifications :** Unmodified

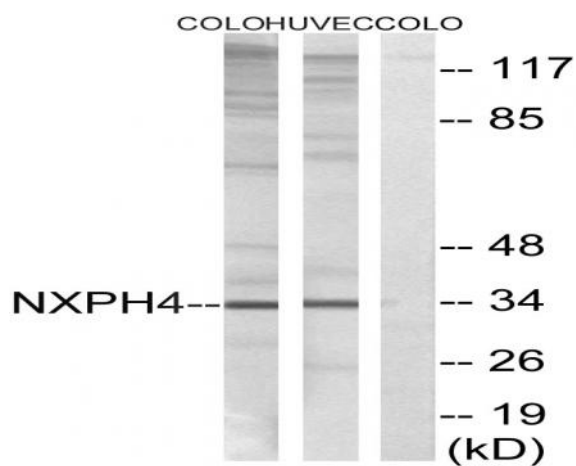
## Products Images



Western Blot analysis of various cells using Neurexophilin-4 Polyclonal Antibody



Immunohistochemistry analysis of paraffin-embedded human brain tissue, using NXPH4 Antibody. The picture on the right is blocked with the synthesized peptide.



Western blot analysis of lysates from COLO and HUVEC cells, using NXPH4 Antibody. The lane on the right is blocked with the synthesized peptide.