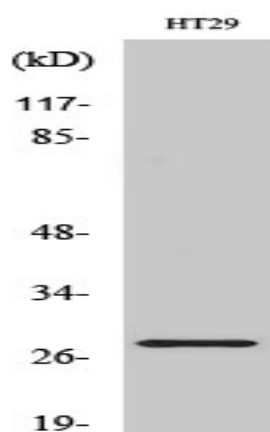


Neurexophilin-3 Polyclonal Antibody

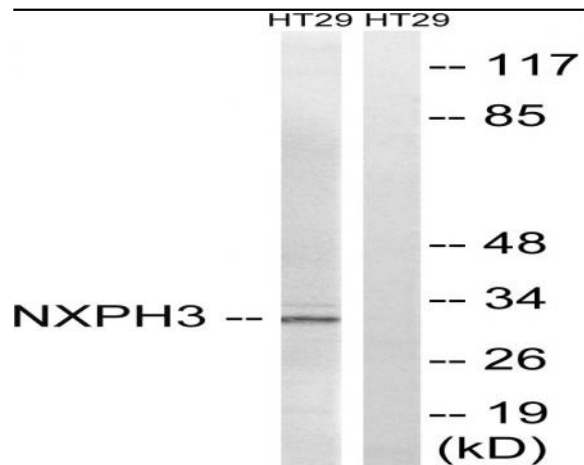
Catalog No :	YT3059
Reactivity :	Human;Mouse;Rat
Applications :	WB;IHC;IF;ELISA
Target :	Neurexophilin-3
Gene Name :	NXPH3
Protein Name :	Neurexophilin-3
Human Gene Id :	11248
Human Swiss Prot No :	O95157
Mouse Gene Id :	104079
Mouse Swiss Prot No :	Q91VX5
Rat Gene Id :	59315
Rat Swiss Prot No :	Q9Z2N5
Immunogen :	The antiserum was produced against synthesized peptide derived from human NXPH3. AA range:158-207
Specificity :	Neurexophilin-3 Polyclonal Antibody detects endogenous levels of Neurexophilin-3 protein.
Formulation :	Liquid in PBS containing 50% glycerol, 0.5% BSA and 0.02% sodium azide.
Source :	Polyclonal, Rabbit,IgG
Dilution :	WB 1:500 - 1:2000. IHC 1:100 - 1:300. ELISA: 1:10000.. IF 1:50-200
Purification :	The antibody was affinity-purified from rabbit antiserum by affinity-chromatography using epitope-specific immunogen.

Concentration :	1 mg/ml
Storage Stability :	-15°C to -25°C/1 year(Do not lower than -25°C)
Observed Band :	30kD
Background :	function:May be signaling molecules that resemble neuropeptides. Ligand for alpha-neurexins.,PTM:May be proteolytically processed at the boundary between the N-terminal non-conserved and the central conserved domain in neuron-like cells.,similarity:Belongs to the neurexophilin family.,tissue specificity:Highest level in brain.,
Function :	function:May be signaling molecules that resemble neuropeptides. Ligand for alpha-neurexins.,PTM:May be proteolytically processed at the boundary between the N-terminal non-conserved and the central conserved domain in neuron-like cells.,similarity:Belongs to the neurexophilin family.,tissue specificity:Highest level in brain.,
Subcellular Location :	Secreted .
Expression :	Highest level in brain.
Sort :	10708
No4 :	1
Host :	Rabbit
Modifications :	Unmodified

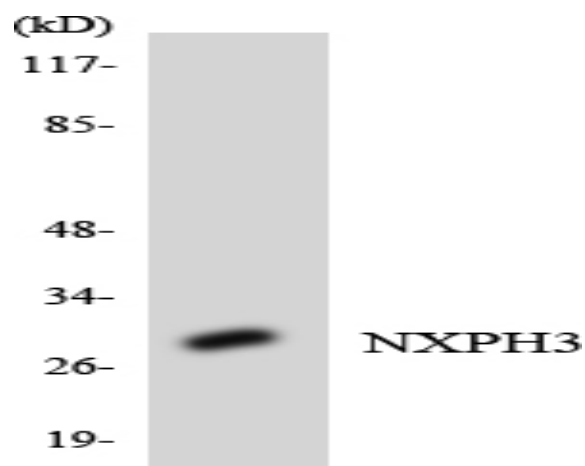
Products Images



Western Blot analysis of various cells using Neurexophilin-3 Polyclonal Antibody



Western blot analysis of lysates from HT-29 cells, using NXP3 Antibody. The lane on the right is blocked with the synthesized peptide.



Western blot analysis of the lysates from HepG2 cells using NXP3 antibody.



Immunohistochemical analysis of paraffin-embedded human tonsil. 1, Antibody was diluted at 1:200(4° overnight). 2, Tris-EDTA,pH9.0 was used for antigen retrieval. 3,Secondary antibody was diluted at 1:200(room temperature, 30min).