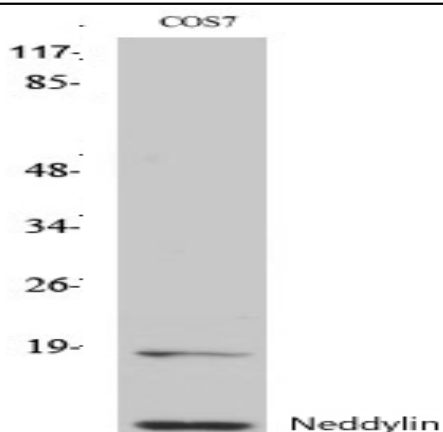


## Neddylin Polyclonal Antibody

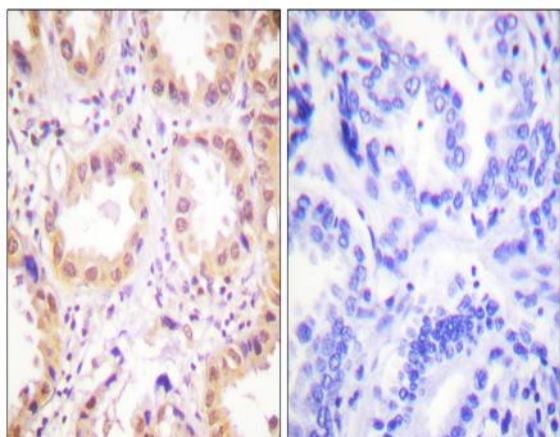
<b>Catalog No :</b>	YT3026
<b>Reactivity :</b>	Human;Mouse;Rat;Monkey
<b>Applications :</b>	WB;IHC;IF;ELISA
<b>Target :</b>	Neddylin
<b>Gene Name :</b>	NEDD8
<b>Protein Name :</b>	NEDD8
<b>Human Gene Id :</b>	4738
<b>Human Swiss Prot No :</b>	Q15843
<b>Mouse Gene Id :</b>	18002
<b>Mouse Swiss Prot No :</b>	P29595
<b>Rat Gene Id :</b>	25490
<b>Rat Swiss Prot No :</b>	Q71UE8
<b>Immunogen :</b>	The antiserum was produced against synthesized peptide derived from human NEDD8. AA range:10-59
<b>Specificity :</b>	Neddylin Polyclonal Antibody detects endogenous levels of Neddylin protein.
<b>Formulation :</b>	Liquid in PBS containing 50% glycerol, 0.5% BSA and 0.02% sodium azide.
<b>Source :</b>	Polyclonal, Rabbit,IgG
<b>Dilution :</b>	WB 1:500 - 1:2000. IHC 1:100 - 1:300. ELISA: 1:5000.. IF 1:50-200
<b>Purification :</b>	The antibody was affinity-purified from rabbit antiserum by affinity-chromatography using epitope-specific immunogen.

<b>Concentration :</b>	1 mg/ml
<b>Storage Stability :</b>	-15°C to -25°C/1 year(Do not lower than -25°C)
<b>Observed Band :</b>	9kD
<b>Background :</b>	function:Ubiquitin-like protein which plays an important role in cell cycle control and embryogenesis. Covalent attachment to its substrates requires prior activation by the E1 complex UBE1C-APPBP1 and linkage to the E2 enzyme UBE2M. Attachment of NEDD8 to cullins activates their associated E3 ubiquitin ligase activity, and thus promotes polyubiquitination and proteasomal degradation of cyclins and other regulatory proteins.,PTM:Cleavage of precursor form by UCHL3 or SENP8 is necessary for function.,similarity:Belongs to the ubiquitin family.,subcellular location:Mainly nuclear.,subunit:Directly interacts with NUB1 and AHR. Covalently attached to cullins and p53.,tissue specificity:Highly expressed in heart, skeletal muscle, spleen, thymus, prostate, testis, ovary, colon and leukocytes.,
<b>Function :</b>	function:Ubiquitin-like protein which plays an important role in cell cycle control and embryogenesis. Covalent attachment to its substrates requires prior activation by the E1 complex UBE1C-APPBP1 and linkage to the E2 enzyme UBE2M. Attachment of NEDD8 to cullins activates their associated E3 ubiquitin ligase activity, and thus promotes polyubiquitination and proteasomal degradation of cyclins and other regulatory proteins.,PTM:Cleavage of precursor form by UCHL3 or SENP8 is necessary for function.,similarity:Belongs to the ubiquitin family.,subcellular location:Mainly nuclear.,subunit:Directly interacts with NUB1 and AHR. Covalently attached to cullins and p53.,tissue specificity:Highly expressed in heart, skeletal muscle, spleen, thymus, prostate, testis, ovary, colon and leukocytes.,
<b>Subcellular Location :</b>	Nucleus . Mainly nuclear. .
<b>Expression :</b>	Highly expressed in heart, skeletal muscle, spleen, thymus, prostate, testis, ovary, colon and leukocytes.
<b>Sort :</b>	10659
<b>No4 :</b>	1
<b>Host :</b>	Rabbit
<b>Modifications :</b>	Unmodified

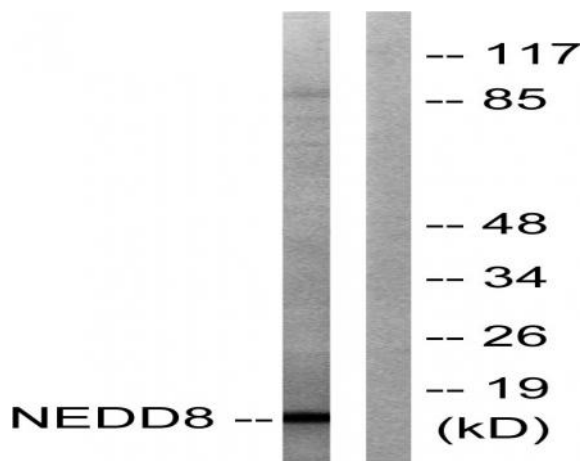
## Products Images



Western Blot analysis of various cells using Neddylin Polyclonal Antibody diluted at 1:1000 cells nucleus extracted by Minute™ Cytoplasmic and Nuclear Fractionation kit (SC-003, Inventibiotec, MN, USA).



Immunohistochemistry analysis of paraffin-embedded human lung carcinoma tissue, using NEDD8 Antibody. The picture on the right is blocked with the synthesized peptide.



Western blot analysis of lysates from Jurkat cells, using NEDD8 Antibody. The lane on the right is blocked with the synthesized peptide.