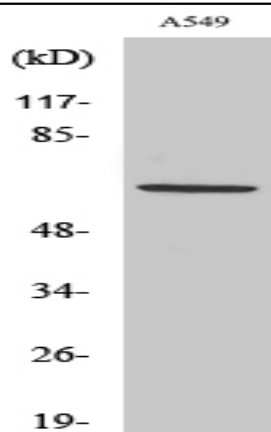


Nectin 3 Polyclonal Antibody

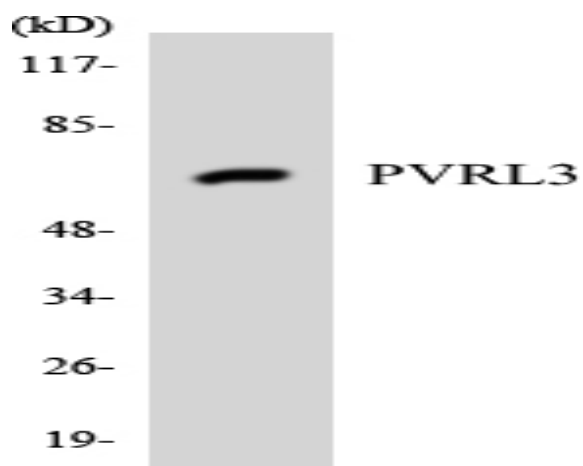
Catalog No :	YT3024
Reactivity :	Human;Mouse
Applications :	WB;ELISA
Target :	Nectin 3
Fields :	>>Cell adhesion molecules;>>Adherens junction
Gene Name :	PVRL3
Protein Name :	Poliovirus receptor-related protein 3
Human Gene Id :	25945
Human Swiss Prot No :	Q9NQS3
Mouse Gene Id :	58998
Mouse Swiss Prot No :	Q9JLB9
Immunogen :	The antiserum was produced against synthesized peptide derived from human PVRL3. AA range:184-233
Specificity :	Nectin 3 Polyclonal Antibody detects endogenous levels of Nectin 3 protein.
Formulation :	Liquid in PBS containing 50% glycerol, 0.5% BSA and 0.02% sodium azide.
Source :	Polyclonal, Rabbit,IgG
Dilution :	WB 1:500 - 1:2000. ELISA: 1:5000. Not yet tested in other applications.
Purification :	The antibody was affinity-purified from rabbit antiserum by affinity-chromatography using epitope-specific immunogen.
Concentration :	1 mg/ml

Storage Stability :	-15°C to -25°C/1 year(Do not lower than -25°C)
Observed Band :	61kD
Cell Pathway :	Cell adhesion molecules (CAMs);Adherens_Junction;
Background :	This gene encodes a member of the nectin family of proteins, which function as adhesion molecules at adherens junctions. This family member interacts with other nectin-like proteins and with afadin, a filamentous actin-binding protein involved in the regulation of directional motility, cell proliferation and survival. This gene plays a role in ocular development involving the ciliary body. Mutations in this gene are believed to result in congenital ocular defects. Alternative splicing results in multiple transcript variants. [provided by RefSeq, Aug 2011],
Function :	function:Plays a role in cell-cell adhesion through heterophilic trans-interactions with nectin-like proteins or nectins, such as trans-interaction with PVRL2/nectin-2 at Sertoli-spermatid junctions. Trans-interaction with PVR induces activation of CDC42 and RAC small G proteins through common signaling molecules such as SRC and RAP1. Also involved in the formation of cell-cell junctions, including adherens junctions and synapses. Induces endocytosis-mediated down-regulation of PVR from the cell surface, resulting in reduction of cell movement and proliferation. Plays a role in the morphology of the ciliary body.,similarity:Belongs to the nectin family.,similarity:Contains 1 Ig-like V-type (immunoglobulin-like) domain.,similarity:Contains 2 Ig-like C2-type (immunoglobulin-like) domains.,subunit:Cis- and trans-homodimer. Can form trans-heterodimers with PVRL1/nectin-1, PVRL2/nectin-2, PVR
Subcellular Location :	Cell membrane ; Single-pass membrane protein . Cell junction, synapse, postsynaptic cell membrane .
Expression :	Predominantly expressed in testis and placenta as well as in many cell lines, including epithelial cell lines.
Sort :	10654
No4 :	1
Host :	Rabbit
Modifications :	Unmodified

Products Images



Western Blot analysis of various cells using Nectin 3 Polyclonal Antibody



Western blot analysis of the lysates from HUVEC cells using PVRL3 antibody.