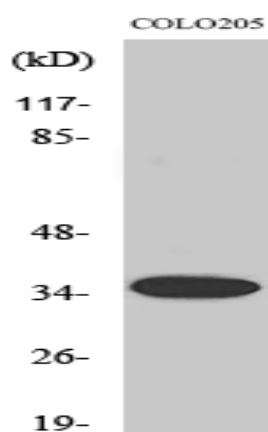


Olfactory receptor 1A1 Polyclonal Antibody

Catalog No :	YT3280
Reactivity :	Human;Rat;Mouse;
Applications :	WB;ELISA
Target :	Olfactory receptor 1A1
Fields :	>>Olfactory transduction
Gene Name :	OR1A1
Protein Name :	Olfactory receptor 1A1
Human Gene Id :	8383
Human Swiss Prot No :	Q9P1Q5
Immunogen :	The antiserum was produced against synthesized peptide derived from human OR1A1. AA range:260-309
Specificity :	Olfactory receptor 1A1 Polyclonal Antibody detects endogenous levels of Olfactory receptor 1A1 protein.
Formulation :	Liquid in PBS containing 50% glycerol, 0.5% BSA and 0.02% sodium azide.
Source :	Polyclonal, Rabbit,IgG
Dilution :	WB 1:500 - 1:2000. ELISA: 1:20000. Not yet tested in other applications.
Purification :	The antibody was affinity-purified from rabbit antiserum by affinity-chromatography using epitope-specific immunogen.
Concentration :	1 mg/ml
Storage Stability :	-15°C to -25°C/1 year(Do not lower than -25°C)
Observed Band :	35kD

Cell Pathway :	Olfactory transduction;
Background :	olfactory receptor family 1 subfamily A member 1(OR1A1) Homo sapiens Olfactory receptors interact with odorant molecules in the nose, to initiate a neuronal response that triggers the perception of a smell. The olfactory receptor proteins are members of a large family of G-protein-coupled receptors (GPCR) arising from single coding-exon genes. Olfactory receptors share a 7-transmembrane domain structure with many neurotransmitter and hormone receptors and are responsible for the recognition and G protein-mediated transduction of odorant signals. The olfactory receptor gene family is the largest in the genome. The nomenclature assigned to the olfactory receptor genes and proteins for this organism is independent of other organisms. [provided by RefSeq, Jul 2008],
Function :	function:Odorant receptor .,similarity:Belongs to the G-protein coupled receptor 1 family.,
Subcellular Location :	Cell membrane; Multi-pass membrane protein.
Sort :	11110
No4 :	1
Host :	Rabbit
Modifications :	Unmodified

Products Images



Western Blot analysis of various cells using Olfactory receptor 1A1 Polyclonal Antibody

