

Olfactory receptor 10H3/4 Polyclonal Antibody

Catalog No :	YT3256
Reactivity :	Human;Rat;Mouse;
Applications :	WB;ELISA
Target :	Olfactory receptor 10H3/4
Fields :	>>Olfactory transduction
Gene Name :	OR10H3/OR10H4
Protein Name :	Olfactory receptor 10H3/4
Human Gene Id :	26532/126541
Human Swiss Prot No :	O60404/Q8NGA5
Immunogen :	The antiserum was produced against synthesized peptide derived from human OR10H3/10H4. AA range:234-283
Specificity :	Olfactory receptor 10H3/4 Polyclonal Antibody detects endogenous levels of Olfactory receptor 10H3/4 protein.
Formulation :	Liquid in PBS containing 50% glycerol, 0.5% BSA and 0.02% sodium azide.
Source :	Polyclonal, Rabbit,IgG
Dilution :	WB 1:500 - 1:2000. ELISA: 1:10000. Not yet tested in other applications.
Purification :	The antibody was affinity-purified from rabbit antiserum by affinity-chromatography using epitope-specific immunogen.
Concentration :	1 mg/ml
Storage Stability :	-15°C to -25°C/1 year(Do not lower than -25°C)
Observed Band :	38kD

Cell Pathway : Olfactory transduction;

Background : Olfactory receptors interact with odorant molecules in the nose, to initiate a neuronal response that triggers the perception of a smell. The olfactory receptor proteins are members of a large family of G-protein-coupled receptors (GPCR) arising from single coding-exon genes. Olfactory receptors share a 7-transmembrane domain structure with many neurotransmitter and hormone receptors and are responsible for the recognition and G protein-mediated transduction of odorant signals. The olfactory receptor gene family is the largest in the genome. The nomenclature assigned to the olfactory receptor genes and proteins for this organism is independent of other organisms. [provided by RefSeq, Jul 2008],

Function : function:Odorant receptor .,similarity:Belongs to the G-protein coupled receptor 1 family.,

Subcellular Location : Cell membrane; Multi-pass membrane protein.

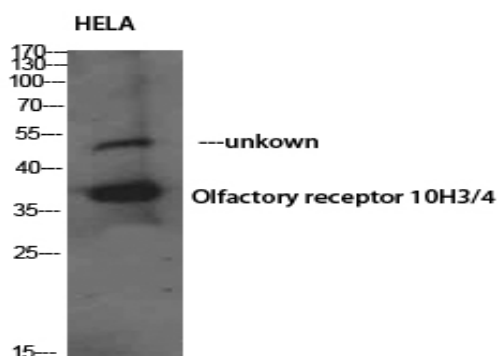
Sort : 11086

No4 : 1

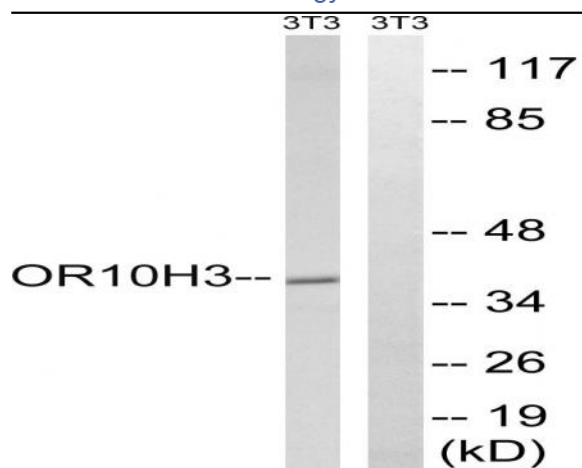
Host : Rabbit

Modifications : Unmodified

Products Images



Western Blot analysis of HELA using Olfactory receptor 10H3/4 Polyclonal Antibody. Antibody was diluted at 1:1000



Western blot analysis of lysates from NIH/3T3 cells, using OR10H3/10H4 Antibody. The lane on the right is blocked with the synthesized peptide.