

**NCKX3 Polyclonal Antibody**

<b>Catalog No :</b>	YT2993
<b>Reactivity :</b>	Human;Mouse;Rat
<b>Applications :</b>	WB;ELISA
<b>Target :</b>	NCKX3
<b>Gene Name :</b>	SLC24A3
<b>Protein Name :</b>	Sodium/potassium/calcium exchanger 3
<b>Human Gene Id :</b>	57419
<b>Human Swiss Prot No :</b>	Q9HC58
<b>Mouse Swiss Prot No :</b>	Q99PD7
<b>Rat Swiss Prot No :</b>	Q9EPQ0
<b>Immunogen :</b>	The antiserum was produced against synthesized peptide derived from human SLC24A3. AA range:354-403
<b>Specificity :</b>	NCKX3 Polyclonal Antibody detects endogenous levels of NCKX3 protein.
<b>Formulation :</b>	Liquid in PBS containing 50% glycerol, 0.5% BSA and 0.02% sodium azide.
<b>Source :</b>	Polyclonal, Rabbit,IgG
<b>Dilution :</b>	WB 1:500 - 1:2000. ELISA: 1:20000. Not yet tested in other applications.
<b>Purification :</b>	The antibody was affinity-purified from rabbit antiserum by affinity-chromatography using epitope-specific immunogen.
<b>Concentration :</b>	1 mg/ml
<b>Storage Stability :</b>	-15°C to -25°C/1 year(Do not lower than -25°C)

**Observed Band :** 60kD

**Background :** Plasma membrane sodium/calcium exchangers are an important component of intracellular calcium homeostasis and electrical conduction. Potassium-dependent sodium/calcium exchangers such as SLC24A3 are believed to transport 1 intracellular calcium and 1 potassium ion in exchange for 4 extracellular sodium ions (Kraev et al., 2001 [PubMed 11294880]).[supplied by OMIM, Mar 2008],

**Function :** function:Transports 1 Ca(2+) and 1 K(+) in exchange for 4 Na(+).,similarity:Belongs to the sodium/potassium/calcium exchanger family. SLC24A subfamily.,tissue specificity:Abundant in the brain. Expressed at low levels in the aorta, uterus and intestine.,

**Subcellular Location :** Cell membrane ; Multi-pass membrane protein .

**Expression :** Abundant in the brain (PubMed:11294880). Expressed at low levels in the aorta, uterus and intestine (PubMed:11294880).

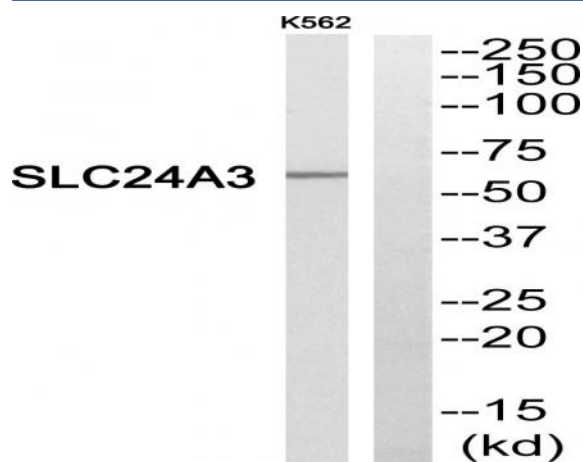
**Sort :** 10611

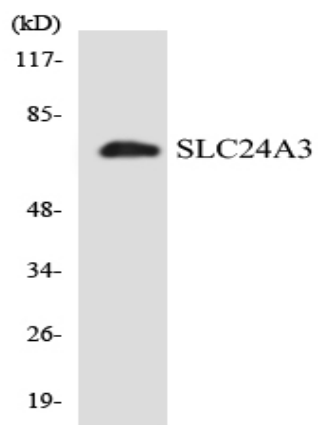
**No4 :** 1

**Host :** Rabbit

**Modifications :** Unmodified

## Products Images





Western blot analysis of the lysates from K562 cells using SLC24A3 antibody.