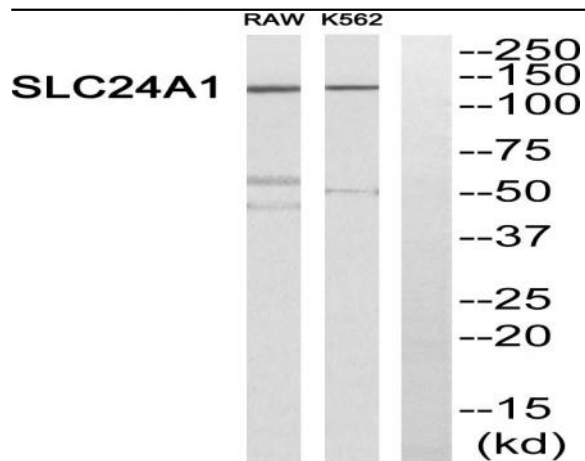


NCKX1 Polyclonal Antibody

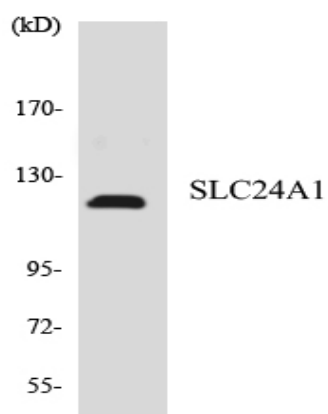
Catalog No :	YT2992
Reactivity :	Human;Rat;Mouse;
Applications :	WB;ELISA
Target :	NCKX1
Fields :	>>Phototransduction
Gene Name :	SLC24A1
Protein Name :	Sodium/potassium/calcium exchanger 1
Human Gene Id :	9187
Human Swiss Prot No :	O60721
Immunogen :	The antiserum was produced against synthesized peptide derived from human SLC24A1. AA range:154-203
Specificity :	NCKX1 Polyclonal Antibody detects endogenous levels of NCKX1 protein.
Formulation :	Liquid in PBS containing 50% glycerol, 0.5% BSA and 0.02% sodium azide.
Source :	Polyclonal, Rabbit,IgG
Dilution :	WB 1:500 - 1:2000. ELISA: 1:10000. Not yet tested in other applications.
Purification :	The antibody was affinity-purified from rabbit antiserum by affinity-chromatography using epitope-specific immunogen.
Concentration :	1 mg/ml
Storage Stability :	-15°C to -25°C/1 year(Do not lower than -25°C)
Observed Band :	125kD

Background :	This gene encodes a member of the potassium-dependent sodium/calcium exchanger protein family. The encoded protein plays an important role in sodium/calcium exchange in retinal rod and cone photoreceptors by mediating the extrusion of one calcium ion and one potassium ion in exchange for four sodium ions. Mutations in this gene may play a role in congenital stationary night blindness. Alternatively spliced transcript variants encoding multiple isoforms have been observed for this gene. [provided by RefSeq, Dec 2011],
Function :	function:Critical component of the visual transduction cascade, controlling the calcium concentration of outer segments during light and darkness. Light causes a rapid lowering of cytosolic free calcium in the outer segment of both retinal rod and cone photoreceptors and the light-induced lowering of calcium is caused by extrusion via this protein which plays a key role in the process of light adaptation. Transports 1 Ca(2+) and 1 K(+) in exchange for 4 Na(+).,PTM:The uncleaved signal sequence is required for efficient membrane targeting and proper membrane integration.,similarity:Belongs to the sodium/potassium/calcium exchanger family. SLC24A subfamily.,tissue specificity:Found only in the outer segments of retinal rod photoreceptors.,
Subcellular Location :	Cell membrane ; Multi-pass membrane protein .
Expression :	Expressed in the retina, particularly in the inner segment, outer and inner nuclear layers, and ganglion cell layer.
Sort :	10610
No4 :	1
Host :	Rabbit
Modifications :	Unmodified

Products Images



Western blot analysis of SLC24A1 Antibody. The lane on the right is blocked with the SLC24A1 peptide.



Western blot analysis of the lysates from HepG2 cells using SLC24A1 antibody.