

Olfactory receptor 10G6 Polyclonal Antibody

Catalog No :	YT3251
Reactivity :	Human;Rat;Mouse;
Applications :	WB;IF;ELISA
Target :	Olfactory receptor 10G6
Fields :	>>Olfactory transduction
Gene Name :	OR10G6
Protein Name :	Olfactory receptor 10G6
Human Gene Id :	79490
Human Swiss Prot No :	Q8NH81
Immunogen :	The antiserum was produced against synthesized peptide derived from human OR10G6. AA range:261-310
Specificity :	Olfactory receptor 10G6 Polyclonal Antibody detects endogenous levels of Olfactory receptor 10G6 protein.
Formulation :	Liquid in PBS containing 50% glycerol, 0.5% BSA and 0.02% sodium azide.
Source :	Polyclonal, Rabbit,IgG
Dilution :	WB 1:500 - 1:2000. IF 1:200 - 1:1000. ELISA: 1:10000. Not yet tested in other applications.
Purification :	The antibody was affinity-purified from rabbit antiserum by affinity-chromatography using epitope-specific immunogen.
Concentration :	1 mg/ml
Storage Stability :	-15°C to -25°C/1 year(Do not lower than -25°C)

Observed Band : 37kD

Background : Olfactory receptors interact with odorant molecules in the nose, to initiate a neuronal response that triggers the perception of a smell. The olfactory receptor proteins are members of a large family of G-protein-coupled receptors (GPCR) arising from single coding-exon genes. Olfactory receptors share a 7-transmembrane domain structure with many neurotransmitter and hormone receptors and are responsible for the recognition and G protein-mediated transduction of odorant signals. The olfactory receptor gene family is the largest in the genome. The nomenclature assigned to the olfactory receptor genes and proteins for this organism is independent of other organisms. [provided by RefSeq, Jul 2008],

Function : function:Odorant receptor .,similarity:Belongs to the G-protein coupled receptor 1 family.,

Subcellular Location : Cell membrane; Multi-pass membrane protein.

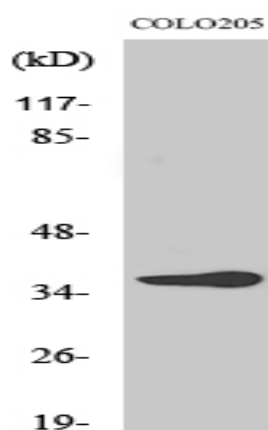
Sort : 11081

No4 : 1

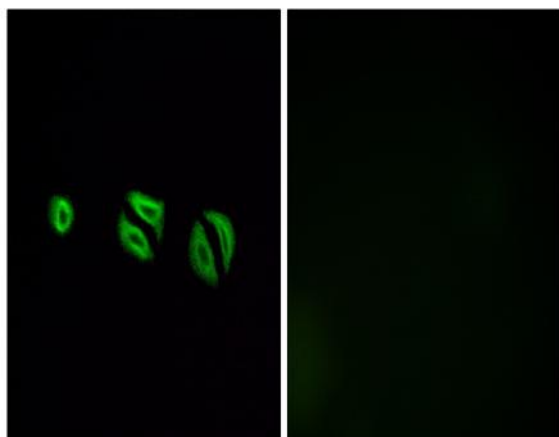
Host : Rabbit

Modifications : Unmodified

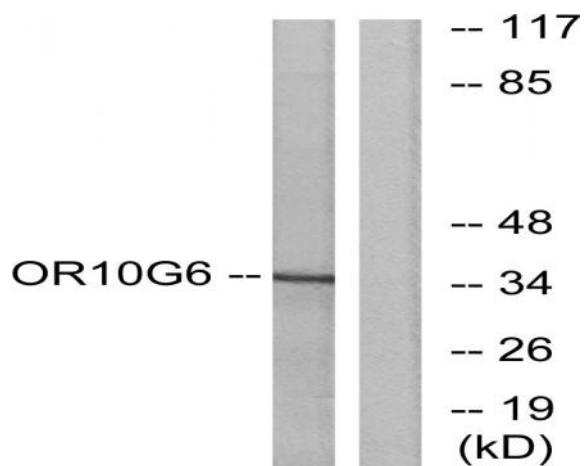
Products Images



Western Blot analysis of various cells using Olfactory receptor 10G6 Polyclonal Antibody



Immunofluorescence analysis of A549 cells, using OR10G6 Antibody. The picture on the right is blocked with the synthesized peptide.



Western blot analysis of lysates from COLO cells, using OR10G6 Antibody. The lane on the right is blocked with the synthesized peptide.