

NBPF5 Polyclonal Antibody

Catalog No :	YT2986
Reactivity :	Human
Applications :	WB;IHC;IF;ELISA
Target :	NBPF5
Gene Name :	NBPF5
Protein Name :	Neuroblastoma breakpoint family member 5
Human Gene Id :	284610
Human Swiss Prot No :	Q86XG9
Immunogen :	The antiserum was produced against synthesized peptide derived from human NBPF5. AA range:302-351
Specificity :	NBPF5 Polyclonal Antibody detects endogenous levels of NBPF5 protein.
Formulation :	Liquid in PBS containing 50% glycerol, 0.5% BSA and 0.02% sodium azide.
Source :	Polyclonal, Rabbit,IgG
Dilution :	WB 1:500 - 1:2000. IHC 1:100 - 1:300. ELISA: 1:10000.. IF 1:50-200
Purification :	The antibody was affinity-purified from rabbit antiserum by affinity-chromatography using epitope-specific immunogen.
Concentration :	1 mg/ml
Storage Stability :	-15°C to -25°C/1 year(Do not lower than -25°C)
Observed Band :	41kD
Background :	NBPF5 (neuroblastoma breakpoint family member 5) is a 351 amino acid cytoplasmic protein that is expressed in medulla and brain and belongs to the

NBPF family. NBPF5 contains one NBPF domain and is encoded by a gene that maps to human chromosome 1p13. Chromosome 1 spans 260 million base pairs, contains over 3000 genes and comprises nearly 8% of the human genome. Chromosome 1 houses a large number of disease-associated genes, including those that are involved in familial adenomatous polyposis, Stickler syndrome, Parkinson's disease, Gaucher disease, schizophrenia and Usher syndrome. Aberrations in chromosome 1 are found in a variety of cancers, including head and neck cancer, malignant melanoma and multiple myeloma.

Subcellular Location :

Cytoplasm .

Expression :

Expressed in brain and medulla.

Sort :

10588

No4 :

1

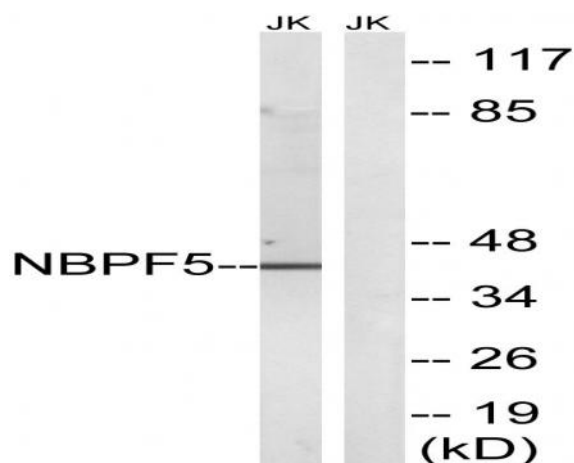
Host :

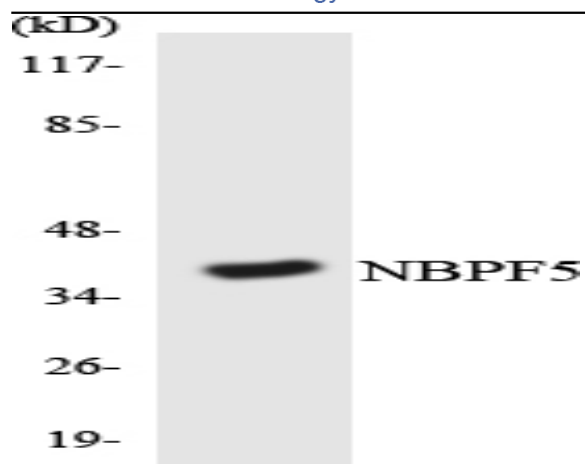
Rabbit

Modifications :

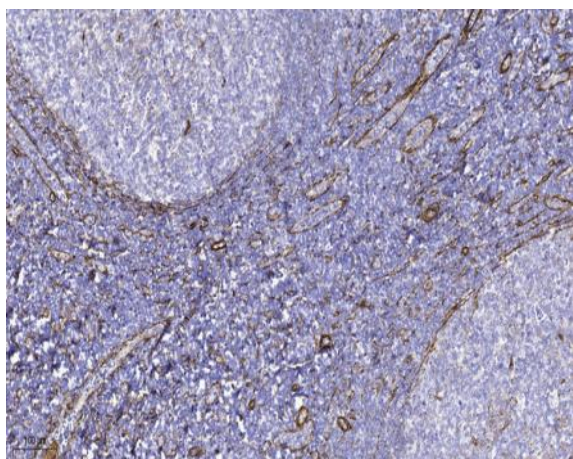
Unmodified

Products Images





Western blot analysis of the lysates from K562 cells using NBPF5 antibody.



Immunohistochemical analysis of paraffin-embedded human tonsil. 1, Tris-EDTA, pH 9.0 was used for antigen retrieval. 2 Antibody was diluted at 1:200 (4° overnight). 3, Secondary antibody was diluted at 1:200 (room temperature, 45min).