

NBPF4 Polyclonal Antibody

Catalog No :	YT2985
Reactivity :	Human
Applications :	IHC;IF;ELISA
Target :	NBPF4
Gene Name :	NBPF4
Protein Name :	Neuroblastoma breakpoint family member 4
Human Gene Id :	148545
Human Swiss Prot No :	Q96M43
Immunogen :	The antiserum was produced against synthesized peptide derived from human NBPF4. AA range:48-97
Specificity :	NBPF4 Polyclonal Antibody detects endogenous levels of NBPF4 protein.
Formulation :	Liquid in PBS containing 50% glycerol, 0.5% BSA and 0.02% sodium azide.
Source :	Polyclonal, Rabbit,IgG
Dilution :	IHC 1:100 - 1:300. ELISA: 1:40000.. IF 1:50-200
Purification :	The antibody was affinity-purified from rabbit antiserum by affinity-chromatography using epitope-specific immunogen.
Concentration :	1 mg/ml
Storage Stability :	-15°C to -25°C/1 year(Do not lower than -25°C)
Molecularweight :	14kD
Background :	neuroblastoma breakpoint family member 4(NBPF4) Homo sapiens This gene is a member of the neuroblastoma breakpoint family (NBPF) which consists of

dozens of recently duplicated genes primarily located in segmental duplications on human chromosome 1. This gene family has experienced its greatest expansion within the human lineage and has expanded, to a lesser extent, among primates in general. Members of this gene family are characterized by tandemly repeated copies of DUF1220 protein domains. Gene copy number variations in the human chromosomal region 1q21.1, where most DUF1220 domains are located, have been implicated in a number of developmental and neurogenetic diseases such as microcephaly, macrocephaly, autism, schizophrenia, mental retardation, congenital heart disease, neuroblastoma, and congenital kidney and urinary tract anomalies. Altered expression of some gene family members is associated with several types of cancer. This gene fam

Function : miscellaneous:Encoded by one of the numerous copies of NBPF genes clustered in the p36, p12 and q21 region of the chromosome 1.,similarity:Belongs to the NBPF family.,similarity:Contains 3 NBPF domains.,tissue specificity:Expressed in testis.,

Subcellular Location : Cytoplasm .

Expression : Expressed in testis.

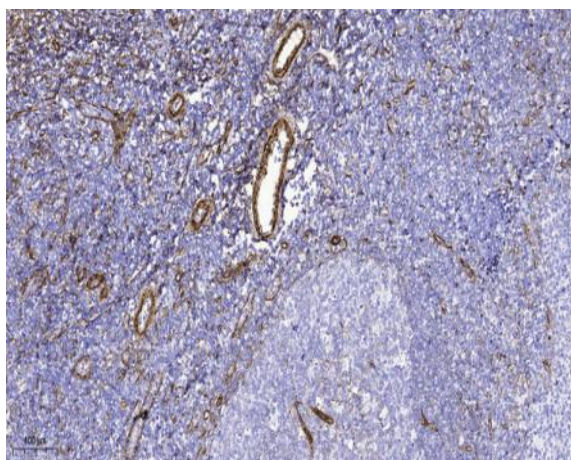
Sort : 10587

No4 : 1

Host : Rabbit

Modifications : Unmodified

Products Images



Immunohistochemical analysis of paraffin-embedded human tonsil. 1, Tris-EDTA,pH9.0 was used for antigen retrieval. 2 Antibody was diluted at 1:200(4° overnight.3,Secondary antibody was diluted at 1:200(room temperature, 45min).