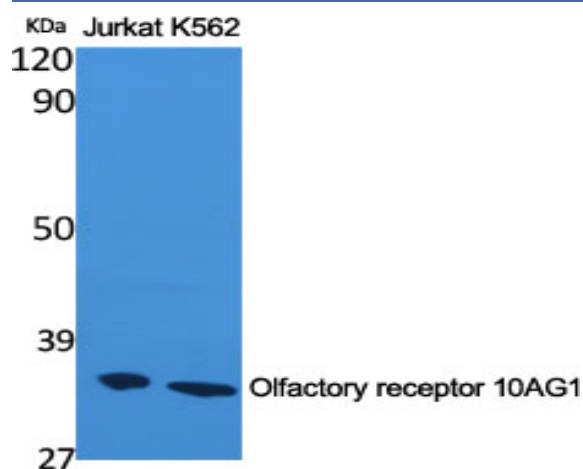


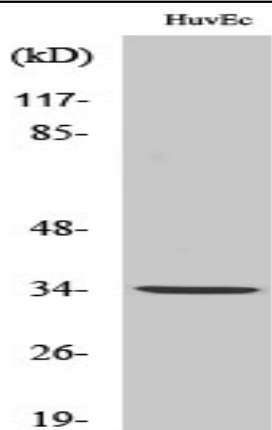
Olfactory receptor 10AG1 Polyclonal Antibody

Catalog No :	YT3246
Reactivity :	Human;Rat;Mouse;
Applications :	WB;IF;ELISA
Target :	Olfactory receptor 10AG1
Fields :	>>Olfactory transduction
Gene Name :	OR10AG1
Protein Name :	Olfactory receptor 10AG1
Human Gene Id :	282770
Human Swiss Prot No :	Q8NH19
Immunogen :	The antiserum was produced against synthesized peptide derived from human OR10AG1. AA range:231-280
Specificity :	Olfactory receptor 10AG1 Polyclonal Antibody detects endogenous levels of Olfactory receptor 10AG1 protein.
Formulation :	Liquid in PBS containing 50% glycerol, 0.5% BSA and 0.02% sodium azide.
Source :	Polyclonal, Rabbit,IgG
Dilution :	WB 1:500 - 1:2000. IF 1:200 - 1:1000. ELISA: 1:40000. Not yet tested in other applications.
Purification :	The antibody was affinity-purified from rabbit antiserum by affinity-chromatography using epitope-specific immunogen.
Concentration :	1 mg/ml
Storage Stability :	-15°C to -25°C/1 year(Do not lower than -25°C)

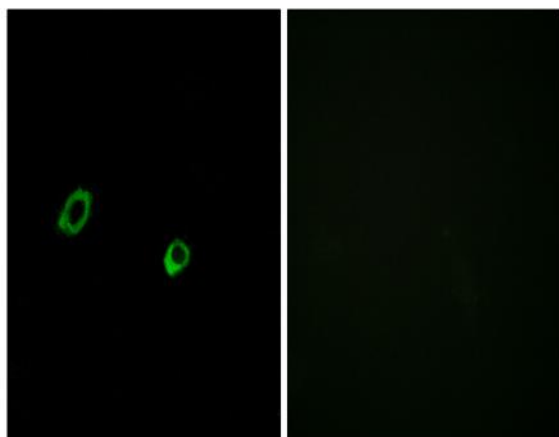
Observed Band :	34kD
Cell Pathway :	Olfactory transduction;
Background :	Olfactory receptors interact with odorant molecules in the nose, to initiate a neuronal response that triggers the perception of a smell. The olfactory receptor proteins are members of a large family of G-protein-coupled receptors (GPCR) arising from single coding-exon genes. Olfactory receptors share a 7-transmembrane domain structure with many neurotransmitter and hormone receptors and are responsible for the recognition and G protein-mediated transduction of odorant signals. The olfactory receptor gene family is the largest in the genome. The nomenclature assigned to the olfactory receptor genes and proteins for this organism is independent of other organisms. [provided by RefSeq, Jul 2008],
Function :	function:Odorant receptor .,similarity:Belongs to the G-protein coupled receptor 1 family.,
Subcellular Location :	Cell membrane; Multi-pass membrane protein.
Sort :	11076
No4 :	1
Host :	Rabbit
Modifications :	Unmodified

Products Images

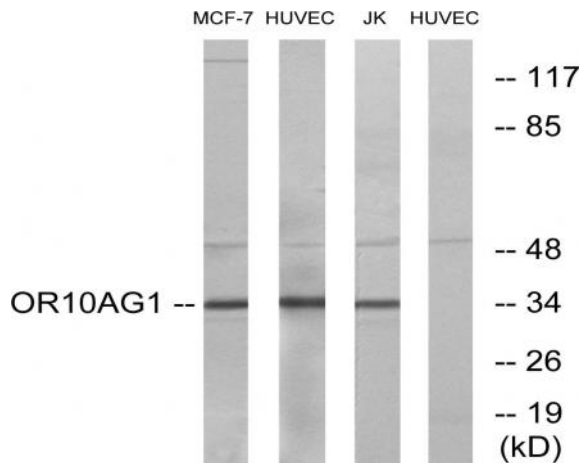




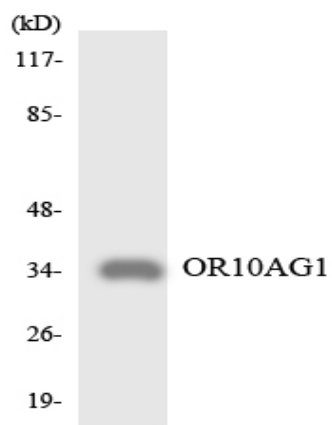
Western Blot analysis of Jurkat cells using Olfactory receptor 10AG1 Polyclonal Antibody



Immunofluorescence analysis of MCF7 cells, using OR10AG1 Antibody. The picture on the right is blocked with the synthesized peptide.



Western blot analysis of lysates from HUVEC, MCF-7, and Jurkat cells, using OR10AG1 Antibody. The lane on the right is blocked with the synthesized peptide.



Western blot analysis of the lysates from RAW264.7 cells using OR10AG1 antibody.