

## NAB2 Polyclonal Antibody

<b>Catalog No :</b>	YT2975
<b>Reactivity :</b>	Human;Mouse
<b>Applications :</b>	WB;IHC;IF;ELISA
<b>Target :</b>	NAB2
<b>Gene Name :</b>	NAB2
<b>Protein Name :</b>	NGFI-A-binding protein 2
<b>Human Gene Id :</b>	4665
<b>Human Swiss Prot No :</b>	Q15742
<b>Mouse Gene Id :</b>	17937
<b>Mouse Swiss Prot No :</b>	Q61127
<b>Immunogen :</b>	The antiserum was produced against synthesized peptide derived from human NAB2. AA range:261-310
<b>Specificity :</b>	NAB2 Polyclonal Antibody detects endogenous levels of NAB2 protein.
<b>Formulation :</b>	Liquid in PBS containing 50% glycerol, 0.5% BSA and 0.02% sodium azide.
<b>Source :</b>	Polyclonal, Rabbit,IgG
<b>Dilution :</b>	WB 1:500 - 1:2000. IHC 1:100 - 1:300. ELISA: 1:10000.. IF 1:50-200
<b>Purification :</b>	The antibody was affinity-purified from rabbit antiserum by affinity-chromatography using epitope-specific immunogen.
<b>Concentration :</b>	1 mg/ml
<b>Storage Stability :</b>	-15°C to -25°C/1 year(Do not lower than -25°C)

---

**Observed Band :** 56kD

---

**Background :** This gene encodes a member of the family of NGFI-A binding (NAB) proteins, which function in the nucleus to repress transcription induced by some members of the EGR (early growth response) family of transactivators. NAB proteins can homo- or hetero-multimerize with other EGR or NAB proteins through a conserved N-terminal domain, and repress transcription through two partially redundant C-terminal domains. Transcriptional repression by the encoded protein is mediated in part by interactions with the nucleosome remodeling and deacetylase (NuRD) complex. Alternatively spliced transcript variants have been described, but their biological validity has not been determined. [provided by RefSeq, Jul 2008],

---

**Function :** domain:The NAB conserved domain 1 (NCD1) interacts with EGR1 inhibitory domain and mediates multimerization.,domain:The NAB conserved domain 2 (NCD2) is necessary for transcriptional repression.,function:Acts as a transcriptional repressor for zinc finger transcription factors EGR1 and EGR2. Isoform 2 lacks repression ability.,induction:By serum and PMA stimulation.,similarity:Belongs to the NAB family.,subcellular location:Isoform 2 is not localized to the nucleus.,subunit:Homomultimers may associate with EGR1 bound to DNA.,tissue specificity:Widely expressed at low levels. Highly expressed in melanoma cell lines.,

---

**Subcellular Location :** Nucleus . Isoform 2 is not localized to the nucleus. .

---

**Expression :** Widely expressed at low levels. Highly expressed in melanoma cell lines.

---

**Sort :** 10549

---

**No4 :** 1

---

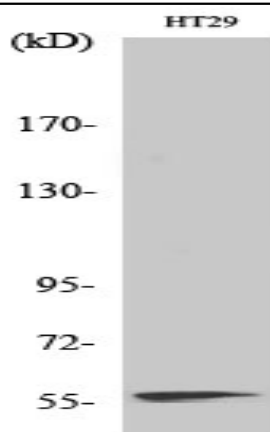
**Host :** Rabbit

---

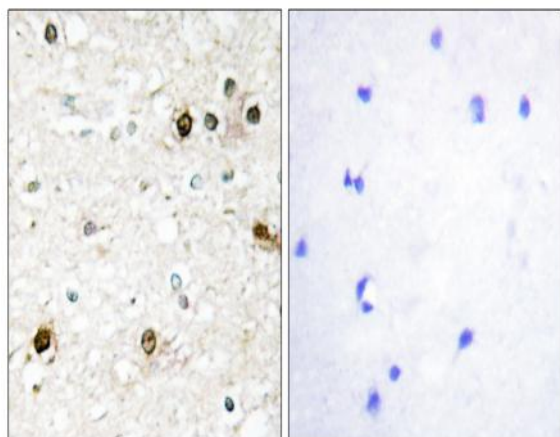
**Modifications :** Unmodified

---

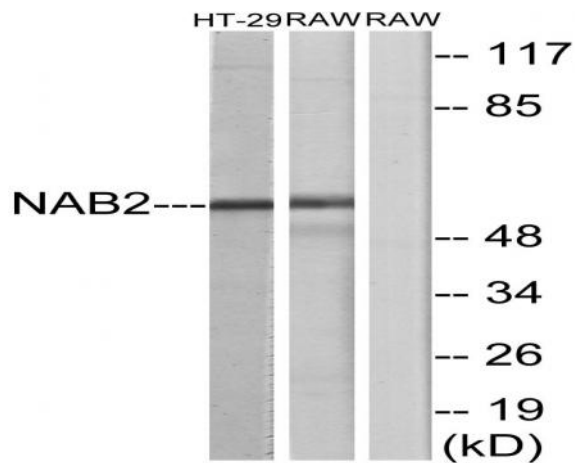
**Products Images**



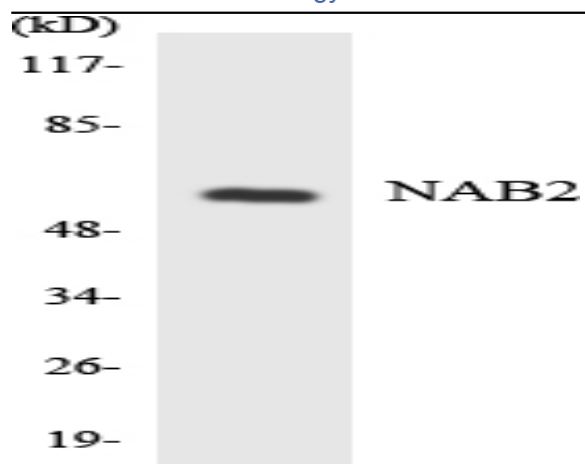
Western Blot analysis of various cells using NAB2 Polyclonal Antibody diluted at 1:1000 cells nucleus extracted by Minute TM Cytoplasmic and Nuclear Fractionation kit (SC-003, Inventbiotech, MN, USA).



Immunohistochemistry analysis of paraffin-embedded human brain tissue, using NAB2 Antibody. The picture on the right is blocked with the synthesized peptide.



Western blot analysis of lysates from HT-29 and RAW264.7 cells, using NAB2 Antibody. The lane on the right is blocked with the synthesized peptide.



Western blot analysis of the lysates from HeLa cells using NAB2 antibody.