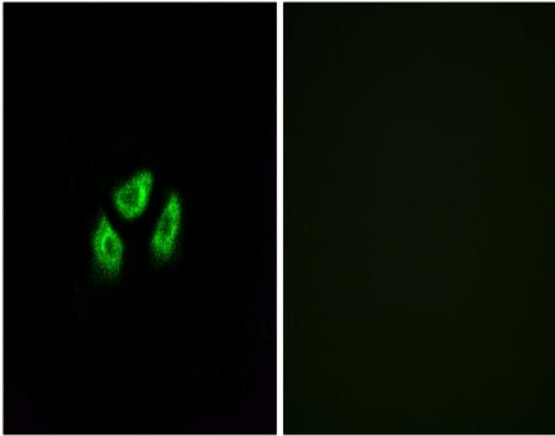


Na⁺ CP type VII α Polyclonal Antibody

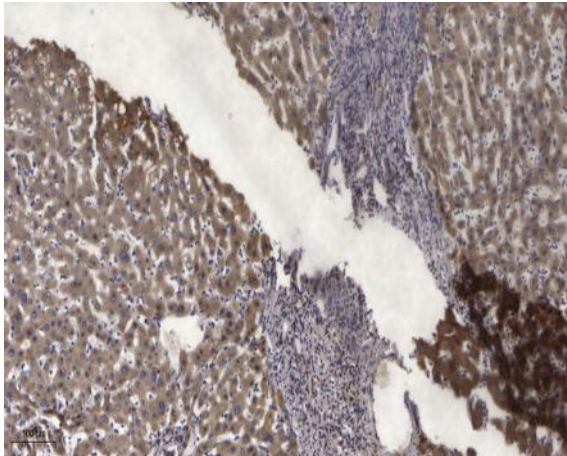
Catalog No :	YT2968
Reactivity :	Human;Monkey
Applications :	WB;IHC
Target :	Na ⁺ CP type VII α
Fields :	>>Adrenergic signaling in cardiomyocytes
Gene Name :	SCN7A
Protein Name :	Sodium channel protein type 7 subunit alpha
Human Gene Id :	6332
Human Swiss Prot No :	Q01118
Immunogen :	The antiserum was produced against synthesized peptide derived from human SCN7A. AA range:771-820
Specificity :	Na ⁺ CP type VII α Polyclonal Antibody detects endogenous levels of Na ⁺ CP type VII α protein.
Formulation :	Liquid in PBS containing 50% glycerol, 0.5% BSA and 0.02% sodium azide.
Source :	Polyclonal, Rabbit,IgG
Dilution :	WB 1:500-2000;IHC 1:50-300
Purification :	The antibody was affinity-purified from rabbit antiserum by affinity-chromatography using epitope-specific immunogen.
Concentration :	1 mg/ml
Storage Stability :	-15°C to -25°C/1 year(Do not lower than -25°C)
Observed Band :	200kD

Background :	This gene encodes one of the many voltage-gated sodium channel proteins. For proper functioning of neurons and muscles during action potentials, voltage-gated sodium channels direct sodium ion diffusion for membrane depolarization. This sodium channel protein has some atypical characteristics; the similarity between the human and mouse proteins is lower compared to other orthologous sodium channel pairs. Also, the S4 segments, which sense voltage changes, have fewer positive charged residues that in other sodium channels; domain 4 has fewer arginine and lysine residues compared to other sodium channel proteins. Several alternatively spliced transcript variants exist, but the full-length natures of all of them remain unknown. [provided by RefSeq, Dec 2011],
Function :	domain:The sequence contains 4 internal repeats, each with 5 hydrophobic segments (S1,S2,S3,S5,S6) and one positively charged segment (S4). Segments S4 are probably the voltage-sensors and are characterized by a series of positively charged amino acids at every third position.,function:Mediates the voltage-dependent sodium ion permeability of excitable membranes. Assuming opened or closed conformations in response to the voltage difference across the membrane, the protein forms a sodium-selective channel through which Na(+) ions may pass in accordance with their electrochemical gradient.,similarity:Belongs to the sodium channel family.,tissue specificity:Heart and uterus.,
Subcellular Location :	Cell membrane ; Multi-pass membrane protein .
Expression :	Heart and uterus.
Tag :	hot
Sort :	10538
No4 :	1
Host :	Rabbit
Modifications :	Unmodified

Products Images



Immunofluorescence analysis of A549 cells, using SCN7A Antibody. The picture on the right is blocked with the synthesized peptide.



Immunohistochemical analysis of paraffin-embedded human liver cancer. 1, Antibody was diluted at 1:200(4° overnight). 2, Tris-EDTA,pH9.0 was used for antigen retrieval. 3,Secondary antibody was diluted at 1:200(room temperature, 45min).