

OCT3 Polyclonal Antibody

Catalog No :	YT3232
Reactivity :	Human;Rat;Mouse;
Applications :	WB;ELISA
Target :	OCT3
Fields :	>>Choline metabolism in cancer
Gene Name :	SLC22A3
Protein Name :	Solute carrier family 22 member 3
Human Gene Id :	6581
Human Swiss Prot No :	O75751
Mouse Swiss Prot No :	Q9WTW5
Immunogen :	The antiserum was produced against synthesized peptide derived from human SLC22A3. AA range:275-324
Specificity :	OCT3 Polyclonal Antibody detects endogenous levels of 40819 protein.
Formulation :	Liquid in PBS containing 50% glycerol, 0.5% BSA and 0.02% sodium azide.
Source :	Polyclonal, Rabbit,IgG
Dilution :	WB 1:500 - 1:2000. ELISA: 1:10000. Not yet tested in other applications.
Purification :	The antibody was affinity-purified from rabbit antiserum by affinity-chromatography using epitope-specific immunogen.
Concentration :	1 mg/ml
Storage Stability :	-15°C to -25°C/1 year(Do not lower than -25°C)

Observed Band : 61kD

Background : Polyspecific organic cation transporters in the liver, kidney, intestine, and other organs are critical for elimination of many endogenous small organic cations as well as a wide array of drugs and environmental toxins. This gene is one of three similar cation transporter genes located in a cluster on chromosome 6. The encoded protein contains twelve putative transmembrane domains and is a plasma integral membrane protein. [provided by RefSeq, Jul 2008],

Function : function:Mediates potential-dependent transport of a variety of organic cations. May play a significant role in the disposition of cationic neurotoxins and neurotransmitters in the brain.,similarity:Belongs to the major facilitator superfamily. Organic cation transporter family.,tissue specificity:Expressed in placenta, skeletal muscle, prostate, aorta, liver, fetal lung, salivary gland, adrenal gland, kidney and brain cortex. No expression detected in spleen.,

Subcellular Location : Membrane; Multi-pass membrane protein.

Expression : Expressed in placenta, skeletal muscle, prostate, aorta, liver, fetal lung, salivary gland, adrenal gland, kidney and brain cortex. No expression detected in spleen.

Tag : orthogonal

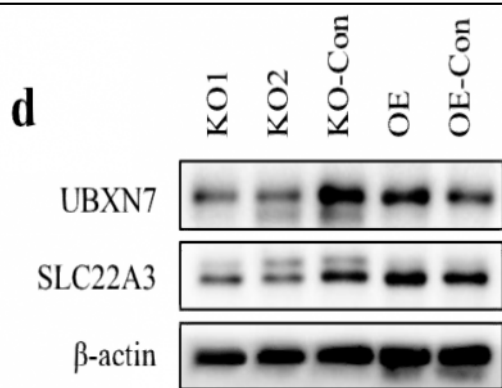
Sort : 11053

No4 : 1

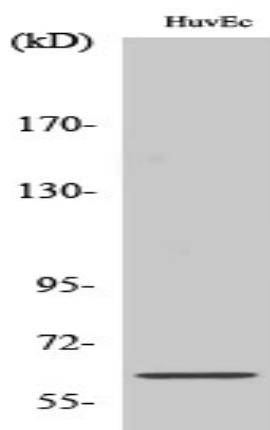
Host : Rabbit

Modifications : Unmodified

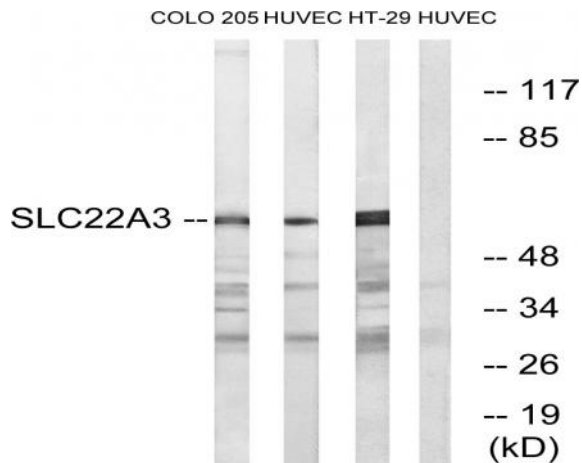
Products Images



CPSF3 Promotes Pre-mRNA Splicing and Prevents CircRNA Cyclization in Hepatocellular Carcinoma. Cancers Qubo Zhu WB Human 1:1000 HepG2 cell, HuH7 cell



Western Blot analysis of various cells using OCT3 Polyclonal Antibody



Western blot analysis of lysates from HUVEC, COLO, and HT-29 cells, using SLC22A3 Antibody. The lane on the right is blocked with the synthesized peptide.