

N4BP1 Polyclonal Antibody

Catalog No :	YT2962
Reactivity :	Human;Mouse
Applications :	WB;IHC;IF;ELISA
Target :	N4BP1
Gene Name :	N4BP1
Protein Name :	NEDD4-binding protein 1
Human Gene Id :	9683
Human Swiss Prot No :	O75113
Mouse Swiss Prot No :	Q6A037
Immunogen :	The antiserum was produced against synthesized peptide derived from human N4BP1. AA range:383-432
Specificity :	N4BP1 Polyclonal Antibody detects endogenous levels of N4BP1 protein.
Formulation :	Liquid in PBS containing 50% glycerol, 0.5% BSA and 0.02% sodium azide.
Source :	Polyclonal, Rabbit,IgG
Dilution :	WB 1:500 - 1:2000. IHC 1:100 - 1:300. ELISA: 1:40000.. IF 1:50-200
Purification :	The antibody was affinity-purified from rabbit antiserum by affinity-chromatography using epitope-specific immunogen.
Concentration :	1 mg/ml
Storage Stability :	-15°C to -25°C/1 year(Do not lower than -25°C)
Observed Band :	100kD

Background : PTM:Monoubiquitinated.,PTM:Phosphorylated upon DNA damage, probably by ATM or ATR.,similarity:Belongs to the N4BP1 family.,subcellular location:In discrete circular structures.,subunit:Binds NEDD4.,tissue specificity:Detected in heart, lung, brain, liver, skeletal muscle, pancreas, kidney, spleen, testis and ovary.,

Function : PTM:Monoubiquitinated.,PTM:Phosphorylated upon DNA damage, probably by ATM or ATR.,similarity:Belongs to the N4BP1 family.,subcellular location:In discrete circular structures.,subunit:Binds NEDD4.,tissue specificity:Detected in heart, lung, brain, liver, skeletal muscle, pancreas, kidney, spleen, testis and ovary.,

Subcellular Location : Cytoplasm, cytosol . Nucleus . Nucleus, nucleolus . Nucleus, PML body . Primarily localizes to the nucleolus. Also localizes to the PML nuclear bodies, when desumoylated. .

Expression : Detected in heart, lung, brain, liver, skeletal muscle, pancreas, kidney, spleen, testis and ovary.

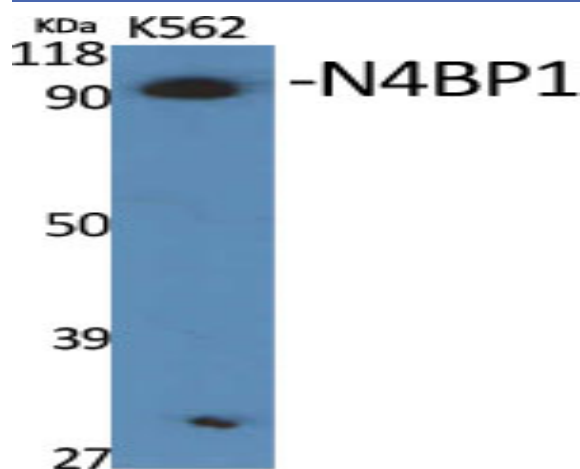
Sort : 10531

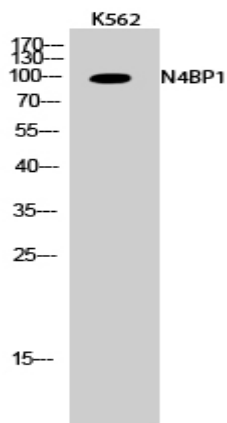
No4 : 1

Host : Rabbit

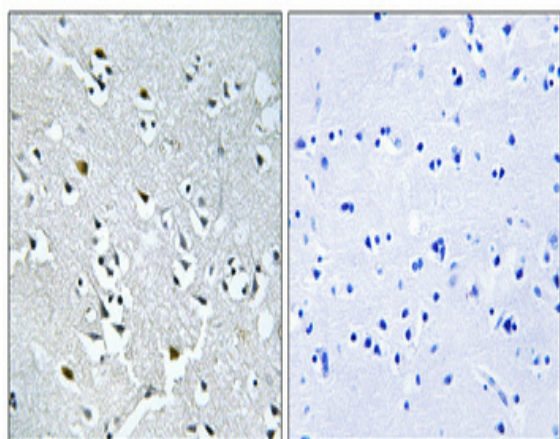
Modifications : Unmodified

Products Images

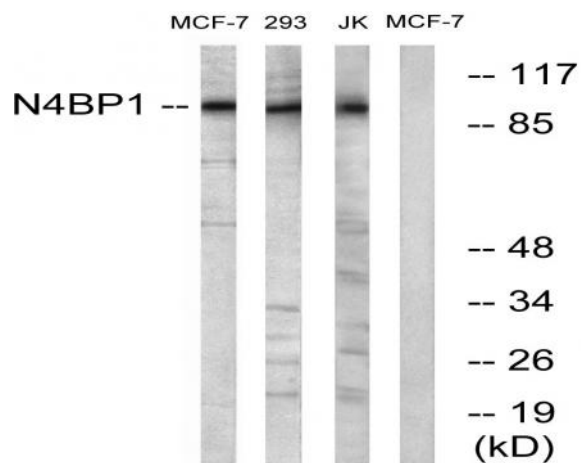




Western Blot analysis of K562 cells using N4BP1 Polyclonal Antibody cells nucleus extracted by Minute TM Cytoplasmic and Nuclear Fractionation kit (SC-003, Inventbiotech, MN, USA).



Immunohistochemical analysis of paraffin-embedded Human brain. Antibody was diluted at 1:100 (4° overnight). High-pressure and temperature Tris-EDTA, pH 8.0 was used for antigen retrieval. Negative control (right) obtained from antibody was pre-absorbed by immunogen peptide.



Western blot analysis of lysates from MCF-7 and Jurkat/293 cells, using N4BP1 Antibody. The lane on the right is blocked with the synthesized peptide.