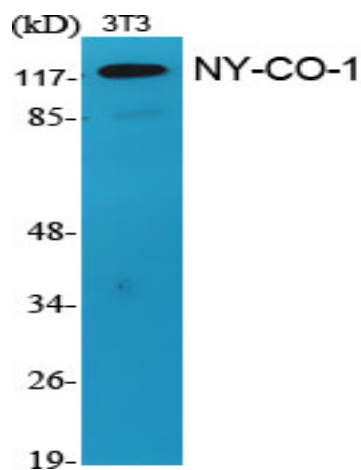


NY-CO-1 Polyclonal Antibody

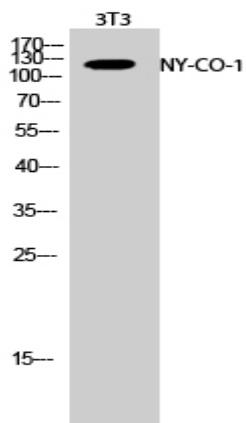
Catalog No :	YT3215
Reactivity :	Human;Mouse;Rat
Applications :	WB;IHC;IF;ELISA
Target :	NY-CO-1
Gene Name :	NEMF
Protein Name :	Nuclear export mediator factor NEMF
Human Gene Id :	9147
Human Swiss Prot No :	O60524
Mouse Gene Id :	66244
Mouse Swiss Prot No :	Q8CCP0
Immunogen :	The antiserum was produced against synthesized peptide derived from human SDCG1. AA range:881-930
Specificity :	NY-CO-1 Polyclonal Antibody detects endogenous levels of NY-CO-1 protein.
Formulation :	Liquid in PBS containing 50% glycerol, 0.5% BSA and 0.02% sodium azide.
Source :	Polyclonal, Rabbit,IgG
Dilution :	WB 1:500 - 1:2000. IHC 1:100 - 1:300. ELISA: 1:20000.. IF 1:50-200
Purification :	The antibody was affinity-purified from rabbit antiserum by affinity-chromatography using epitope-specific immunogen.
Concentration :	1 mg/ml
Storage Stability :	-15°C to -25°C/1 year(Do not lower than -25°C)

Observed Band : 123kD**Background :** This gene encodes a component of the ribosome quality control complex. The encoded protein facilitates the recognition and ubiquitination of stalled 60S subunits by the ubiquitin ligase listerin. A similar protein in fly functions as a tumor suppressor. [provided by RefSeq, Jul 2016],**Subcellular Location :** Cytoplasm, cytosol . Nucleus .**Expression :** Expressed in brain, heart, liver, lung, spleen, and skeletal muscle. Also expressed at lower levels in stomach and testis.**Sort :** 11018**No4 :** 1**Host :** Rabbit**Modifications :** Unmodified

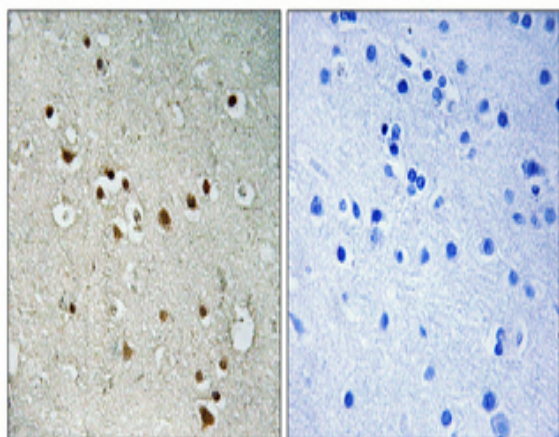
Products Images



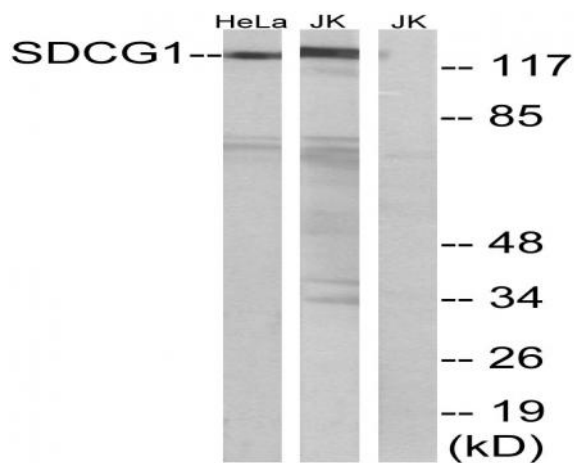
Western Blot analysis of various cells using NY-CO-1 Polyclonal Antibody



Western Blot analysis of 3T3 cells using NY-CO-1 Polyclonal Antibody



Immunohistochemical analysis of paraffin-embedded Human brain. Antibody was diluted at 1:100(4° overnight). High-pressure and temperature Tris-EDTA,pH8.0 was used for antigen retrieval. Negative control (right) obtained from antibody was pre-absorbed by immunogen peptide.



Western blot analysis of lysates from HeLa and Jurkat cells, using SDCG1 Antibody. The lane on the right is blocked with the synthesized peptide.